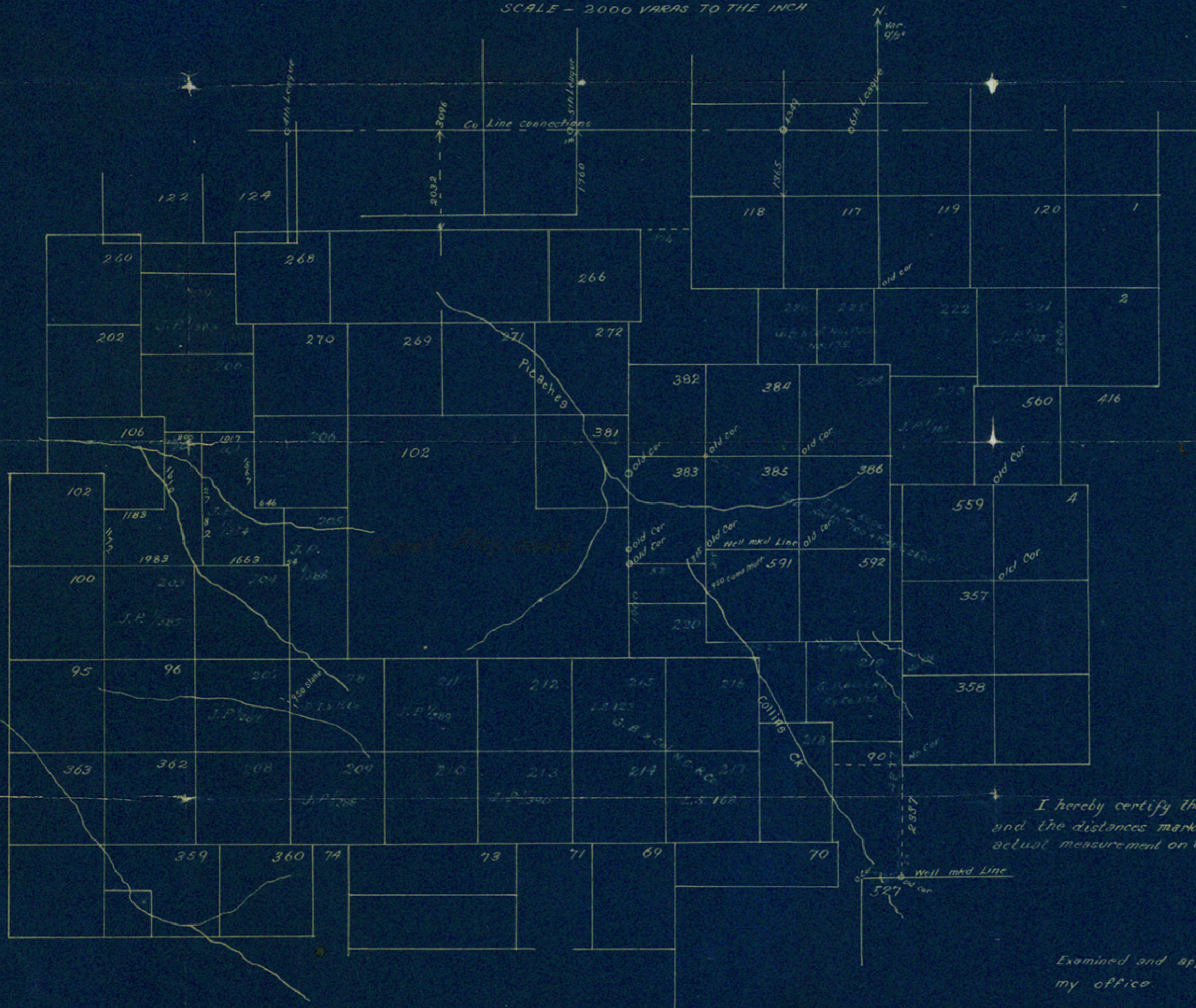


SCALE - 2000 VARAS TO THE INCH



Copy of sketch  
 in File 2202 San Patricio  
 scrip - J. Poitevent.  
 General Land Office.

I hereby certify that this Plat is correct  
 and the distances marked in red ink were from  
 actual measurement on the ground. Sept. 18 80  
 A. M. Funch  
 SURVEYOR DUVAL CO

San Diego, Texas Mar. 29, 1881  
 Examined and approved and recorded in  
 my office.  
 John J. Dip.  
 SURVEYOR DUVAL COUNTY