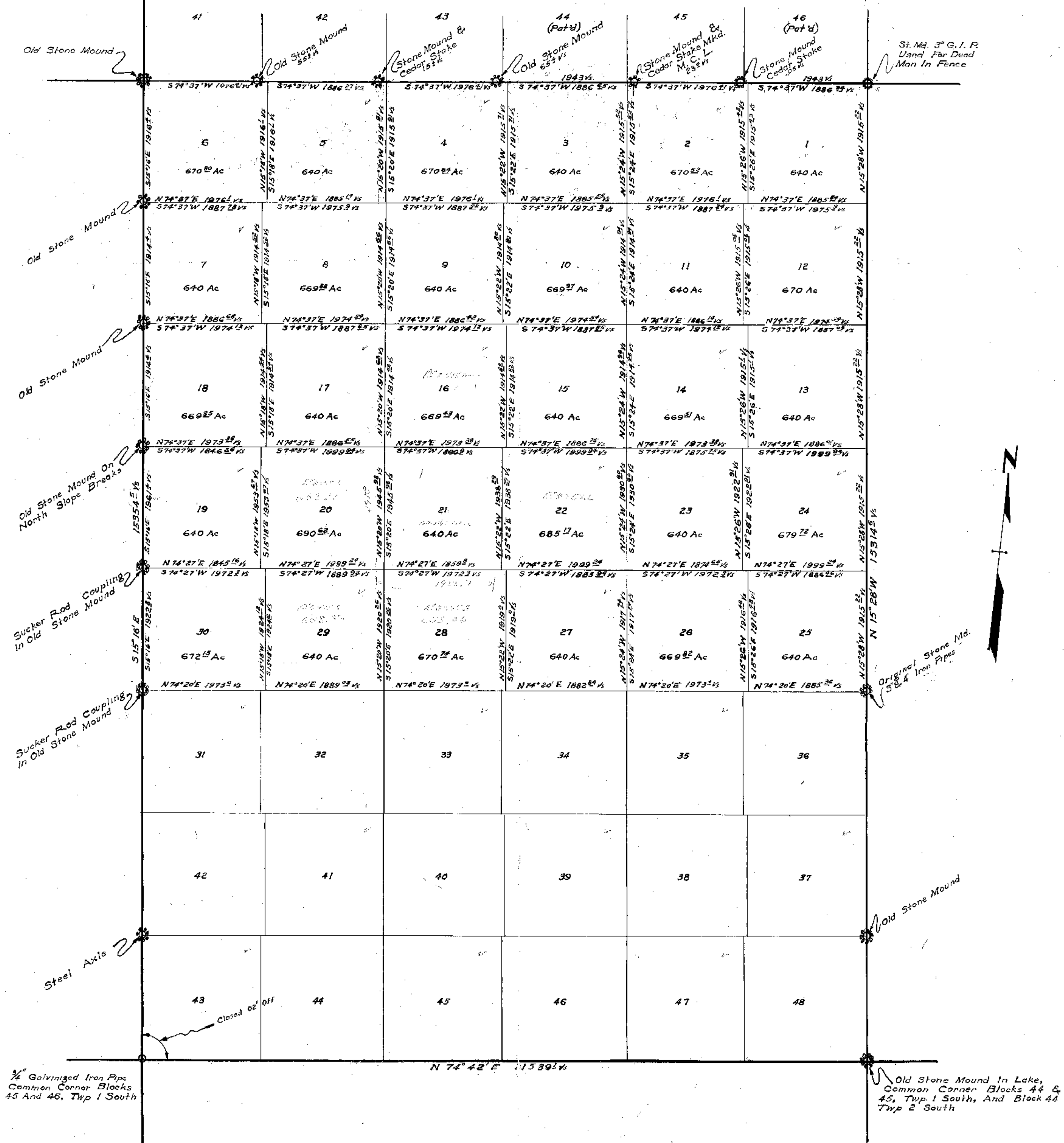


PLAT OF  
BLOCK 45, TOWNSHIP 1, SOUTH  
ECTOR, CO. TEX

Scale: 1" = 1000 1/2'



CERTIFICATE

I, F.W. Estill, of Winkler County, Texas, hereby Certify That The Plot Hereon Is True And Correct And That The Boundaries And Markers, Both Natural And Artificial, Are Truly Described And Set Forth, Just As They Are On The Ground.

This The 15<sup>th</sup> Day Of November, A. D. 1937

*F. W. Estill*  
Liscensed State Land Surveyor  
Winkler County, Texas

116