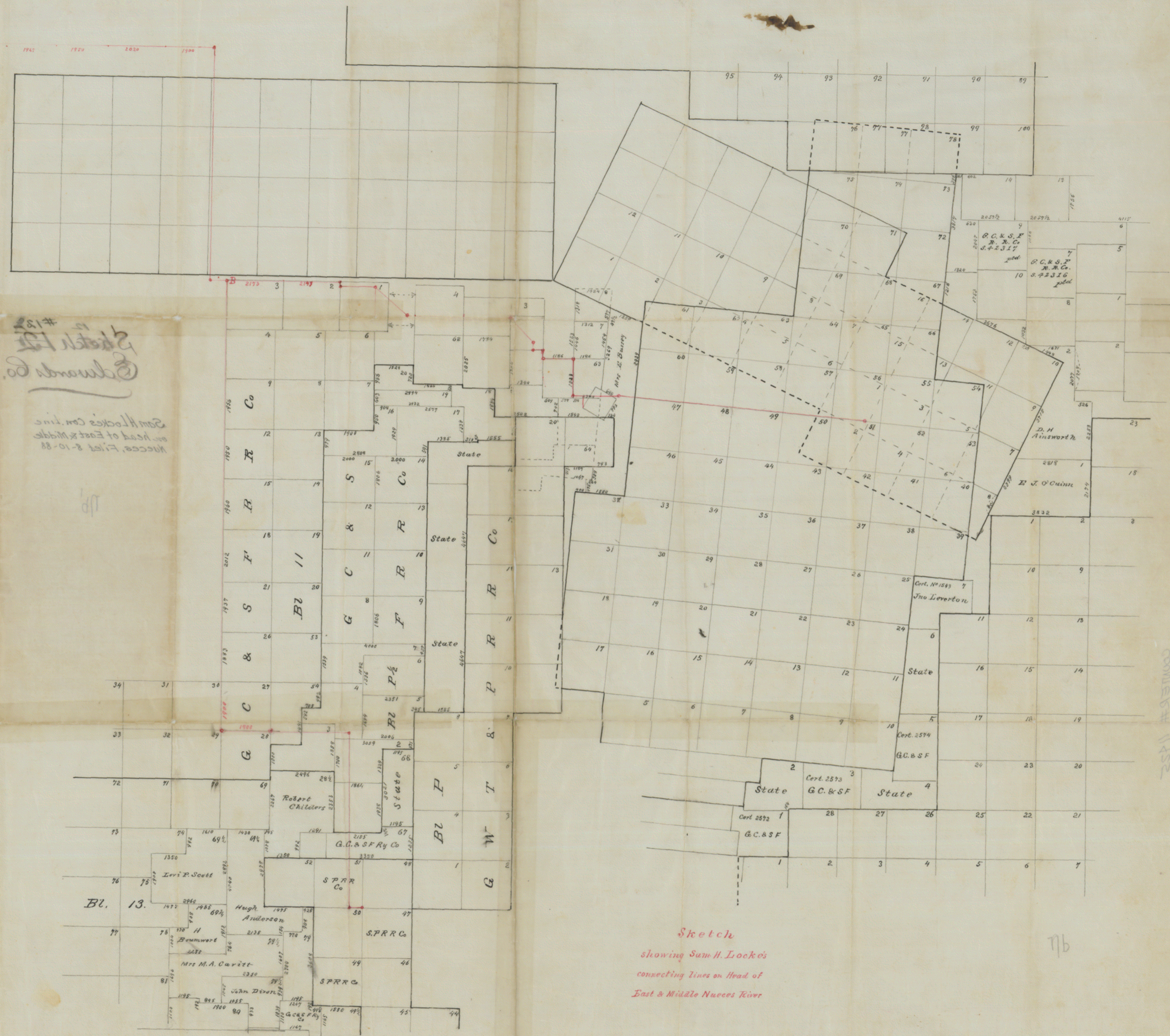


G. & M. Co. San. 11/57



Sketch #12
Edwards Co.

Sam H. Locke's Com. line
on head of East & Middle
Nueces River 8-10-88

Bl. 13.

Sketch
showing Sam H. Locke's
connecting lines on head of
East & Middle Nueces River

See statement of connecting line filed with this

"Sketch #12" Edwards Co.,
Filed Aug 10/88