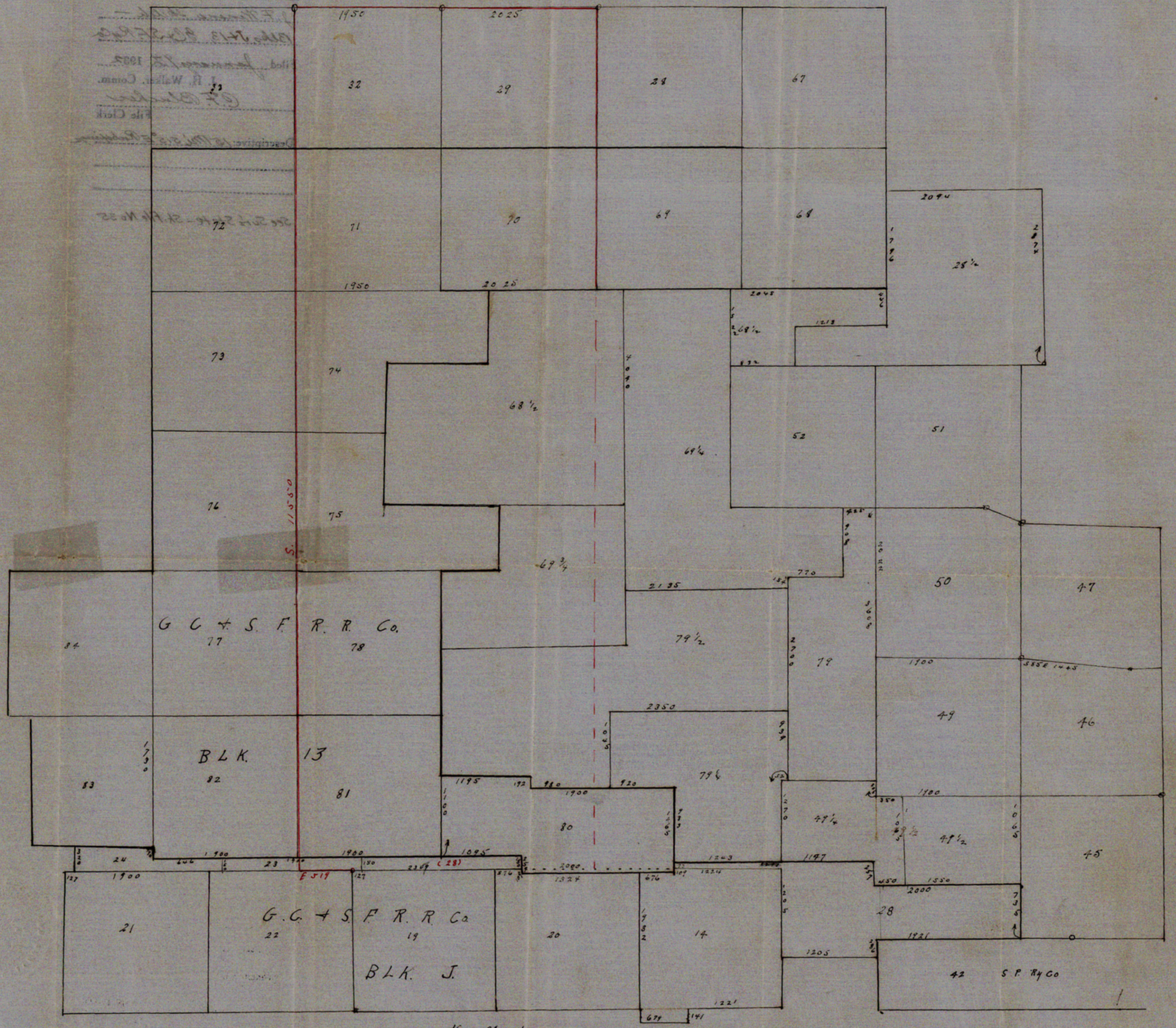


Sketch File No. 36

County
J. F. Miners
1901
J. F. Miners
The Clerk



State of Texas }
 County of Edwards } J. F. Miners do hereby
 certify that the above and foregoing sketch
 is a true and correct representation of
 the surveys shown thereon just as I
 found them on the ground.
 J. F. Miners
 Licensed Land Surveyor.

Var 9° 48'
 Oct. 21st 1901.

(See office sketch in S-36653
 5-18-33 date)