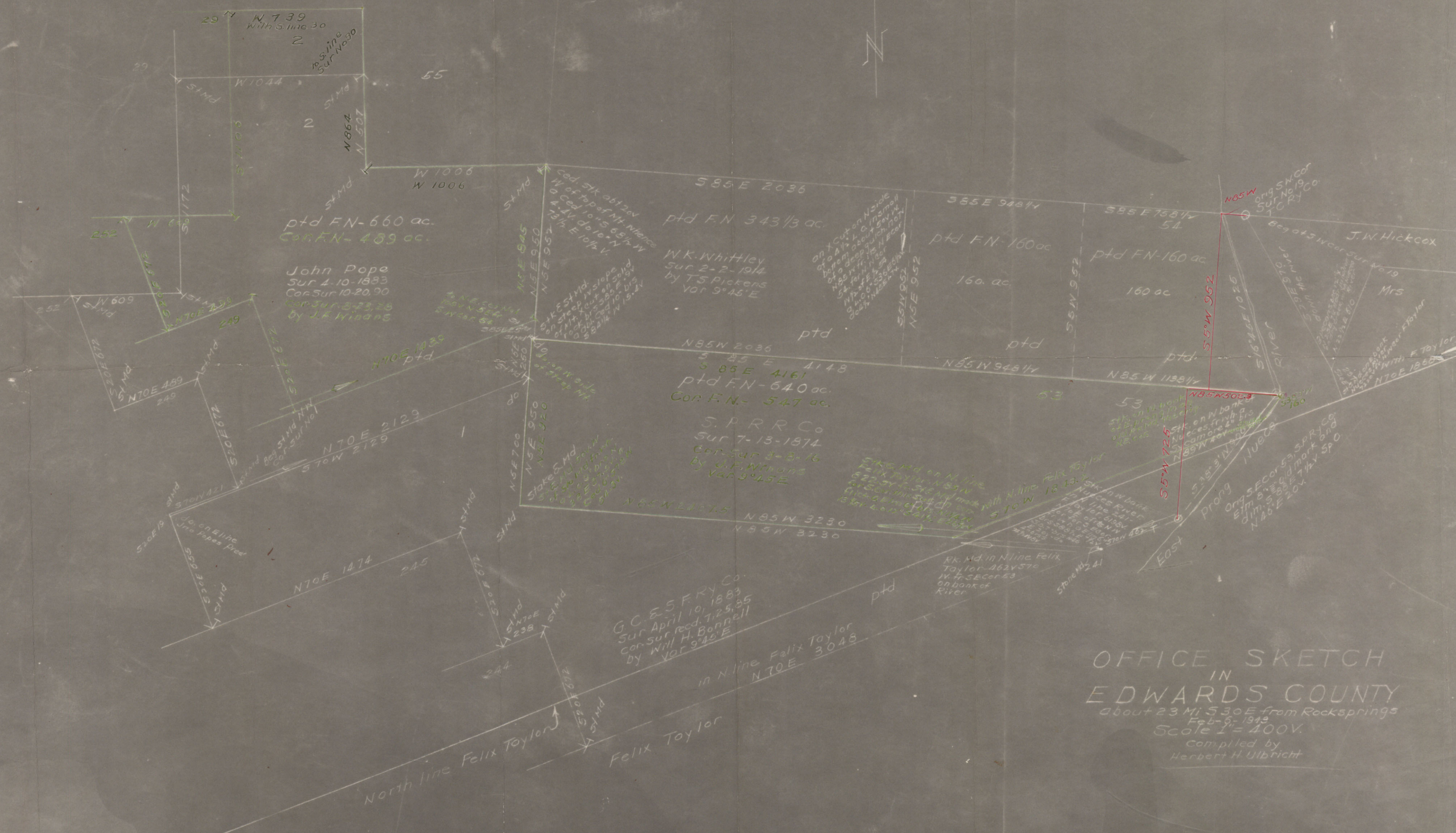


OFFICE SKETCH
 IN
 EDWARDS COUNTY
 about 23 Mi. S 30 E from Rock Springs
 Feb-9, 1913
 Scale 1" = 400'.
 Compiled by
 Herbert H. Ulbricht

Sk. File No. 41
Edwards County
Surveys North of Felix Taylor
20 miles S. 30° E. from Rock Springs

Filed February 21 19 43
Bascom Giles, Com'r
Alton R. Seubert
File Clerk

Sheet 1 of 2



John Pope
Sur 1-10-1883
Cor. Sur 10-20-90
Cor. Sur 3-23-28
by J.F. Williams

W.K. Whittley
Sur 2-2-1914
by T.S. Pickens
Var 9°45'E

S.P.R.R. Co
Sur 7-13-1874
Cor. Sur 3-8-16
by J.F. Williams
Var 9°45'E

G.C. & S.F. Ry. Co.
Sur April 10, 1883
Cor. Sur recd. 7-25-35
by Will H. Bunnell
Var 9°45'E

OFFICE SKETCH
IN
EDWARDS COUNTY
about 23 Mi S 30 E from Rock Springs
Feb-6-1919
Scale 1" = 400'.
Compiled by
Herbert H. Ulbricht

Edwards Co. sketch file 41
Sheet 2 of 2