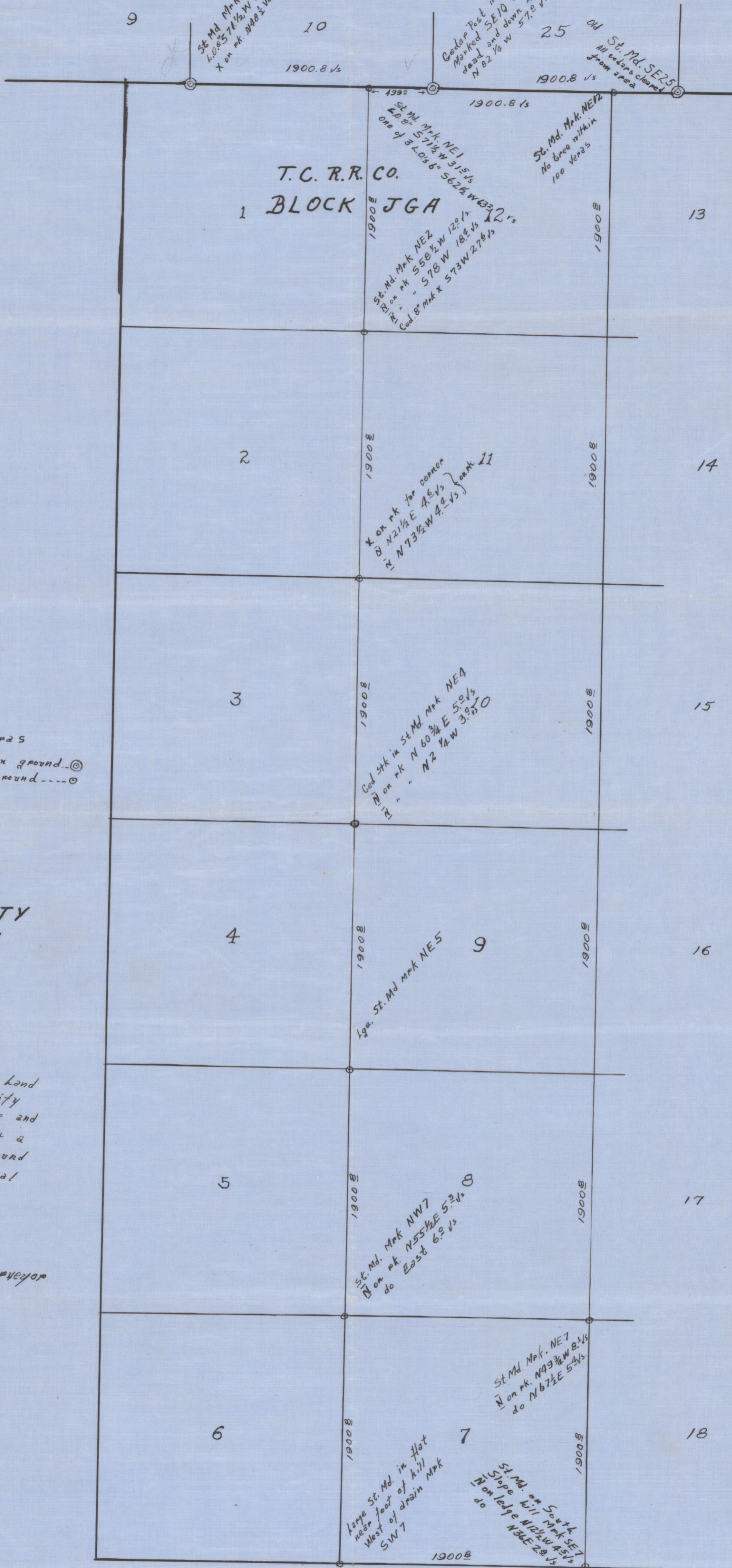


G.H. & S.A.
BLOCK A3



Scale 1 inch = 600 feet
Williams Corners Found on ground...
Corners Made by me on ground....

EDWARDS COUNTY
BLOCK JGA

I, Ned Bishop, Licensed State Land Surveyor, do hereby certify that this plat is a true and correct representation of a survey by me on the ground and that all marks, natural and artificial are truly described herein.

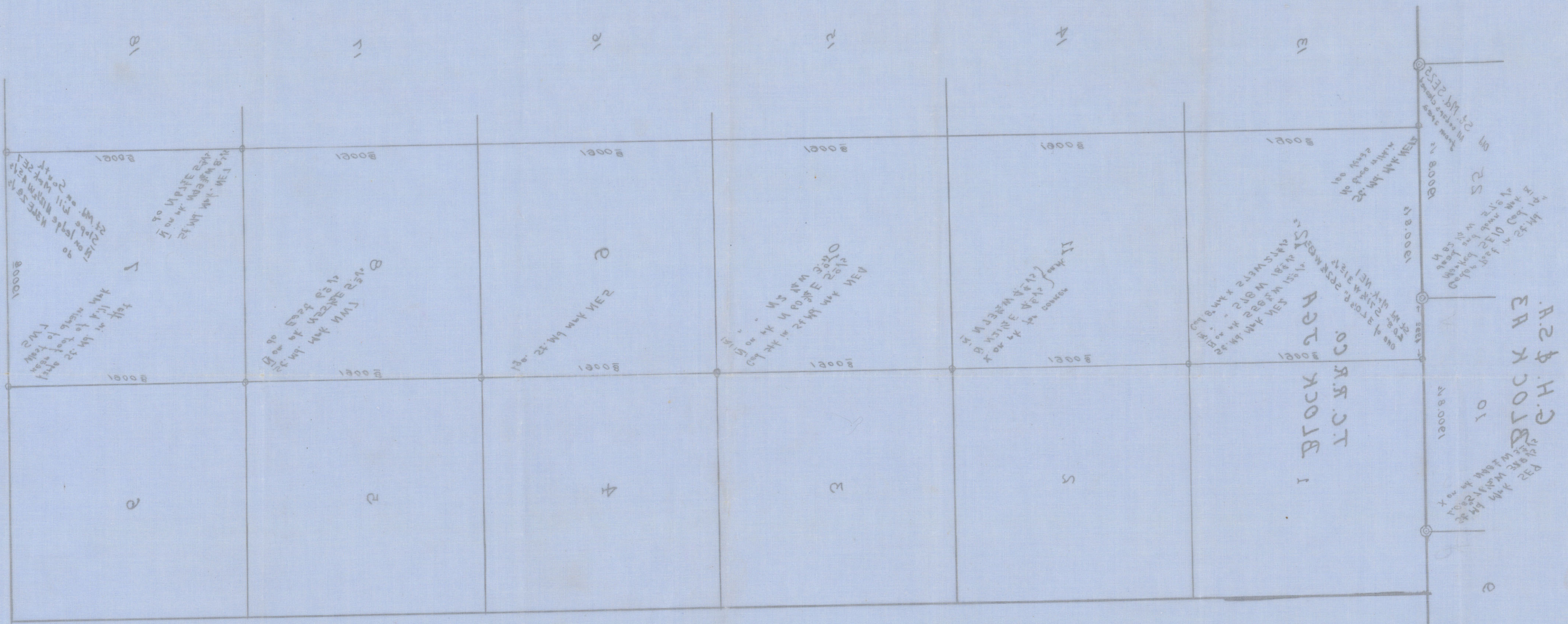
Ned Bishop
Licensed State Land Surveyor

BA
BUT MITCHELL CORP.
1899
JAN 22 1900
EDWARDS COUNTY
L. W. MITCHELL
40-6

RECEIVED
APR 25 1958
GENERAL LAND OFFICE

GENERAL TOWN OFFICE
 MAY 22 1959
 RECEIVED

File No. 49-a
Edwards County
 SKETCH FILE
 Filed April 25, 1959
 BILL ALLCORN, Com'r
 By [Signature]



[Handwritten notes and signatures]
 [Signature]
 [Signature]

BLOCK 12
 EDWARDS COUNTY

Contain map of me on Edwards County
 Williams County land or survey
 2nd 1/4 Sec 36 T11N R10E



Statement explaining system used in the establishment of the four corners of Survey 7, Block JGA.

Began at a stone mound in flat marked SE25, marks are old but plain, all cedars have been cleared from area but mound is unquestionably the monument made by G. M. Williams for the SE corner of Survey 25, Block A3, G. H. & S. A. Thence by careful traverse West at 499.0 varas made large stone mound and marked it NE 12 for the NE corner of Survey 12, Block JGA, T.C. RR. Co, at 1900.8 varas post at fence corner in old stone mound marked SE10 from which a cedar 14" dead and down plainly marked X bears N 82° 15' W 57.0 varas, other bearing tree bulldozed out; Continuing West at 499.0 varas made large stone mound and marked it NE1 for the NE corner of Survey 1, Block JGA, at 1901.0 varas found old stone mound marked SE9 from which X on rock bears N 48° 30' W 3.4 varas, LO about 8" recently bulldozed but still leaning from original position bears S 71° 30' W 31.0 varas. Began again at the monument made by me for the NE corner of Survey 1, Block JGA from which LO marked X bears S 71° 30' W 31.5 varas, one of three LOs in clump bears S 62° 30' W 63.2 varas. Thence turning 90° angle from Williams South line of Block A3 carried traverse south making monuments at every mile as indicated in accompanying plat six miles to establish the SW corner of Survey 7, Block JGA. Began again at the monument made by me for the NE corner of Survey 12 Block JGA from which there are no trees within 100 varas. Thence turning 90° angle from the south block line of Block A3 carried stake line south to points of intersection of lines running East from the NW and SW corners of Survey 7, Block JGA, making monuments and witnessing them as indicated in plat for the NE and SE corners of Survey 7. This system of establishing the corners of Survey 7 was chosen because the survey is in very rough terrain and accurate horizontal measure is quite difficult whereas the system of intersecting lines gives very accurate results.

I, Ned Bishop, do hereby certify that the above statement is true and correct, and that all calls in the accompanying plat and field notes are as found by me on the ground.

Given under my hand this 18th day of April, 1958.

Ned Bishop

Licensed State Land Surveyor



*Williams St. in Bx S. 32180
Con. line in Bx. S. 54811*

FILE NO. 4-9-58
EDMUNDS' CORNER
2nd FILE
MAY 10 1958
BISHOP, Ned
BY

RECEIVED

APR 25 1958

GENERAL LAND OFFICE

APR 22 1958

RECEIVED

File No. 49-b
Edwards County
SKETCH FILE

Filed April 25 1958
BILL ALLCORN, Com'r

By H. E. Hoising

2012 Ex. 2, 22011
2012 Ex. 2, 25180



Given under my hand this 18th day of April, 1958.

notes are as found by me on the ground.
I, Ned Bishop, do hereby certify that the above statement is true

and correct, and that all calls in the accompanying plat and field

the system of intersecting lines gives very accurate results.

remain and accurate horizontal measure is quite different whereas

corners of Survey 7 was chosen because the survey is in very rough

the NE and SW corners of Survey 7. This system of establishing the

104, making monuments and witnessing them as indicated in plat for

of lines running east from the NW and SW corners of Survey 7. Block

line of Block 43 carried stake line south to points of intersection

no trees within 100 yards. Hence turning 90° angle from the south block

by me for the NE corner of Survey 15 Block 104 from the monument made

the SW corner of Survey 7, Block 104, began again at the monument made

at every mile as indicated in accompanying plat six miles to establish

Williams South line of Block 43 carried traverse north making monuments

in clump pears 2 68 301 W 63 20 yards. Hence turning 90° angle from

which is marked by pears 2 68 301 W 31 20 yards. Hence turning 90°

monument made by me for the NE corner of Survey 1, Block 104 from

original position pears 8 31 301 W 31 20 yards. Begin again at the

old stone mark marked 220 from which X on rock pears N 48 301 W



Statement explaining system used in the east plattains
the four corners of Survey 7, Block 104.

File No.

49

Edwards County

SKETCH FILE

Filed April 25 19 58

BILL ALLCORN, Com'r

By

V. E. Thompson

(Report - 49-a^b)
Sketch 49-B^a)

Sketch and Report of
survey to locate
Sec. 7, T.C.Ry, Blk. JGA
By Ned Bishop
April 18, 1958