

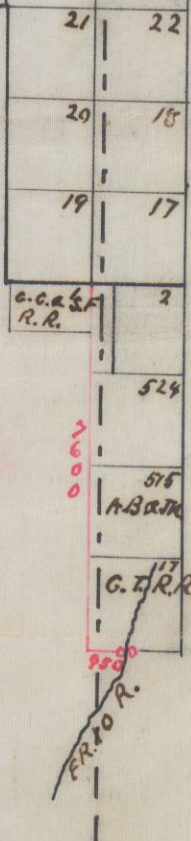


32300 MS



I H. Fleischer County Surveyor of Edwards Co do hereby certify that on accompanying sketch the red lines thereon show the lines of connection actually run on the ground and the corners marked O are Original corners as found by Sur. J. H. Davis and adopted in this Office showing lands surveyed out of conflict belonging to the H. E. & W. T. R. R. Co. Survs. No. 3 & 17 BLK. E lost $119 \frac{65}{100}$ acres each. Surveys Nos. 5, 7, 9, 11, 19, 21, 23 and 25^{BLK. F} were lost complete. Surveys Nos. 59, 65 and 67 BLK. F $\frac{1}{2}$ lost each respectively $255 \frac{1}{2}$, $59 \frac{1}{2}$ and $479 \frac{7}{10}$ acres by conflict.

H. FLEISCHER.
County Surveyor
Edwards Co.
Tex.



Filed for 1888
 Office of the County Surveyor
 I. C. Wilson



I, H. FLEISCHER, County Surveyor of Edwards County
 do hereby certify that this sketch shows the true and
 correct position of surveys represented thereon and all
 corners marked o are established on the ground and
 on Record in this Office

(Signed) H. Fleischer
 County Surveyor
 Edwards County Texas

SK File "A." #
 Filed in General Land Office
 May 1st 1899
 L. C. Wise

Edwards Co

75



as located in this office
 correct position of ground references thereon are all
 as per field notes and this office plans the same are
 1. H. REISNER and number of square feet

(print) J. C. Wise
 General Land Office