

H T & B R R N^o 269

Pierce

Finley

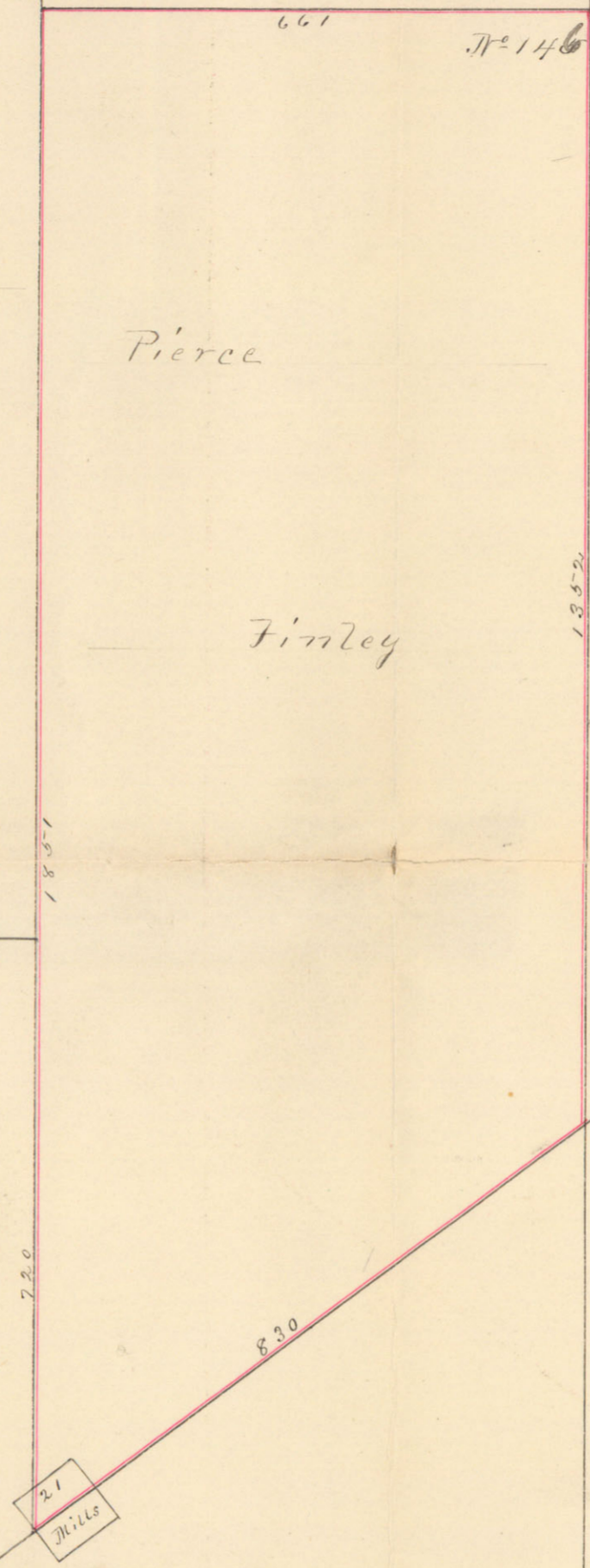
James

Manning

John Barker

Ponce de Leon N^o 145

Rio Grande



El Paso Tex.
December, 18. 1885

I John P Randolph Surveyor of
El Paso County Texas do Certify
that this sketch truly represents
the Pierce Finley Survey and its
connections as found on the
ground by survey made on the
18th of December 1885.
John P. Randolph
Sur. El P. Co Tex

Variation 11° 15' East
Scale, 2000.00 ft. inch.

Filed - Reg. 29. 1885
John P. Randolph
Surveyor

⊖ No 41...

John P. Randolph's sketch
Showing the Pierce Finley
Survey - dated Dec. 18, 1885
Filed Dec. 29, 1885.

El Paso Co

Prepared
Dec 24. 85
1112m

El Paso Co. Skelton file 4

fee \$5.00

The original Plat by Joseph A. Tivy, Dept
Surveyor dated El Paso Dec. 5-1858 approved
by Rufus Doan, Dist. Sur. and filed in this
Office January 21 1859. and

El Paso Skelton file 6

By Jarvis Hubbell dated Oct 20th 1860

and filed in this office Nov. 15th 1860. fee \$4.50

also, ^{another} ~~sketch~~ ^{by James Conroy} ~~showing~~ ^{dis. Survey} Jesse Burkett then

down Rio Grande including surveys 90 & 13

T. & P. Ry. block A. ^{showing} old and new

Fort Hancock and 1st & 2nd G. S. & P. C. Ry.

with copy of plan attached
fee \$3.00