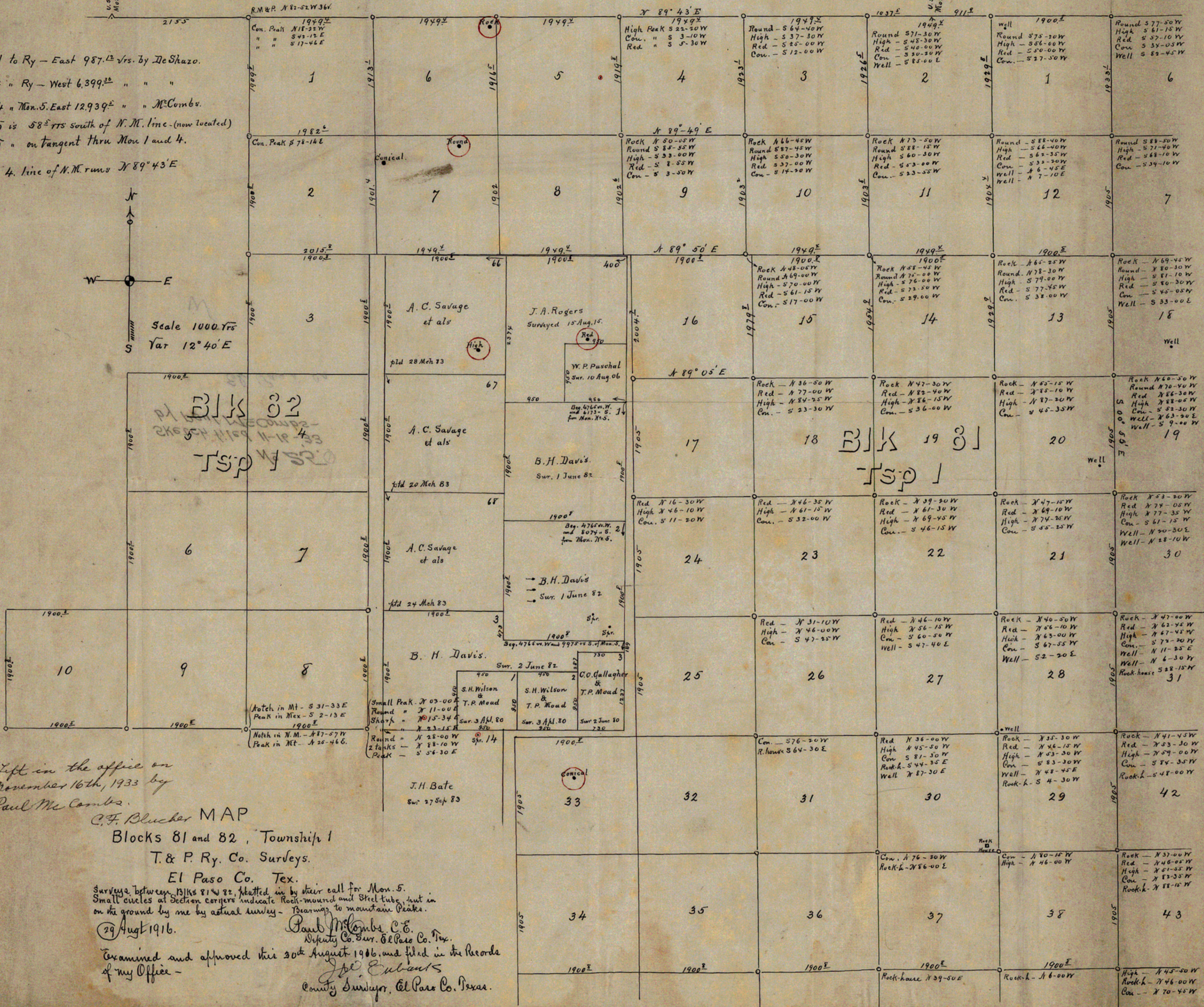
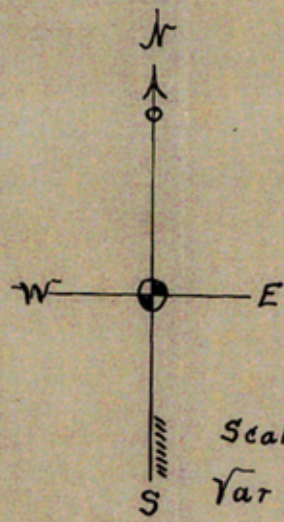


# NEW MEXICO.

U.S. Mon. 1 to Ry - East 987.13 vs. by DeShazo.  
 U.S. Mon 4 " Ry - West 6,399.36 " " "  
 U.S. Mon 4 " Mon. 5. East 12,939.2 " " McCombs.  
 U.S. Mon 5 is 58.5 rrs south of N.M. line - (now located)  
 " " 5 " on tangent thru Mon 1 and 4.  
 From Mon 4. line of N.M. runs N 89° 43' E



Left in the office on  
 November 16th, 1933 by  
 Paul McCombs.

C.F. Blucher MAP  
 Blocks 81 and 82, Township 1  
 T. & P. Ry. Co. Surveys.  
 El Paso Co. Tex.

Surveys between Blks 81 & 82, plotted in by their call for Mon. 5.  
 Small circles at section corners indicate Rock-mound and Steel tube, set in  
 on the ground by me by actual survey - Bearings to mountain Peaks.  
 29 Aug 1916.  
 Paul McCombs, C.E.  
 Deputy Co. Sur. El Paso Co. Tex.  
 Examined and approved this 30th August 1906, and filed in the Records  
 of my Office -  
 J.P. Eubank  
 County Surveyor, El Paso Co. Texas.