

G. A. LIDER, Civil Engineer
County Surveyor, Floyd County

RECEIVED 3300
NOV 4 1914
Referred to Map

F76425
F-79648

S.F. 481-817-5866
SF3016

Floydada, Texas Oct. 30/14 191

Hon. J. T. Robison;
Commissioner Genl. Land Office,
Austin Texas.

Dear Sir:-

Referring to the enclosed plat, I will call your attention to the sketch, dated Feb. 14, 1914, which you furnished me, covering these tracts.

Upon taking up this work in the field, I was directed to the South corners of the T.E. Dawson tract and found a large set stone at both of these corners (the S.E. cor. had a small stone also) these stones appeared to have been undisturbed and I concluded to use them as a basis for the survey of the outside boundary of these tracts.

You will note that we found an excess of 10 varas in the East line, which seems to be in the E. line of the Hobbs 394, the same tract shows an excess of 27 varas in the S. line.

I would also call your attention to our check at the N.E. corner of the Hobbs 395, where allowing for the 10 varas, we checked exactly at a large set stone. Going West from here, at 1527 varas we found set stones S. of us at all vara and at 21 varas, also a mulberry stake at the last stone mentioned.

The other checks you will note on the plat.

I wish to add that we made the survey from the N.W. cor. of the Eastland Co. Sch. L. Leag. No. 4, 5000 varas S. the same East, to locate the S. Line of said Leag. No. 4, but found nothing to check with on the West line, except what we took to be the East corners of the Johnson 320 acre survey, which were E. of us about 52 varas.

I would especially call your attention to the excess or vacancy developed South of the E.G. Murphy and the M. Wilhoit tracts, please advise if this land can be included as excess to either of the Hobbs tracts that touch it? Also can the excess west of the H.H. Campbell, S.F. 2211 be put into the Hobbs survey No. 397.

I would appreciate the return of this plat or a print of it.

Yours very truly,

G. A. Lider

Answered 12-5-14
Clerk
Letter Book 146
428

150722 2 2417

Eastland County School Land
League No 4.

The South line of No 4 was brought 5000
Varas So. from N.W. Corner of 4. as checked
from the Monumental Cor. of Sec. 1. Blk. 1. A. B. & M.

M. A. Rose
Sec. No 8

Tyler Tap
Ry. Co. No 1.

M. Wilhoit 314
S.F. 441

2 1/2" Pipe in field
for S.F. Cor. Leag. 4.

Set stone

E.G. Murphy 309

1092

set stone

Set stone

W.M. Hobbs 397

1527

4010

Set stone

H.H.
Campbell
S.F. 22H

700
669

set stone
This cor. was only
checked for dist.

1238

950.4

970.2

306

Stake

Set Stone
17 1/2 vs. W. of Stake.

3677

119

1 1/2" Gal. Pipe mtd. W.N.W.
40.
M.C.Co.

M.C. Co.
40

W.M. Hobbs
395

At 3000 Line Rk. →

2975

131

1 1/2" Gal. Pipe mtd. N.W.
39.
M.C.Co.

Washington County
Ry. Company
No 4.

D.W. Hooper

J.W. Oldham

A.T. Eastman

Set Stone
18 1/2 vs. 2 1/2 W. of
Iron Rod.
2368
1 Iron Rod.

1363 stk

1371 set stone
and Pits. 21 K.C.

M.C. Co.
39

W.M. Hobbs
396

W.M. Hobbs
394

J.A. Reeves

C.A. Hine

2500 stake

2549

388

408

set stone

Original returned
9/2-5-14 Clark

T.E. Dawson

M.C. Co.
28

James D. Long

1519 5/10

Set Stone 949

Set stone

Set stone

Set stone

1140 Red Sand Stone Rock

1552

The work South of the Eastland
County School Land was tied to the South
corners of the T.E. Dawson tract, and in
checking back on said corners we closed
within 1/2 vara N. and S. and 1/2 vara E. and W.

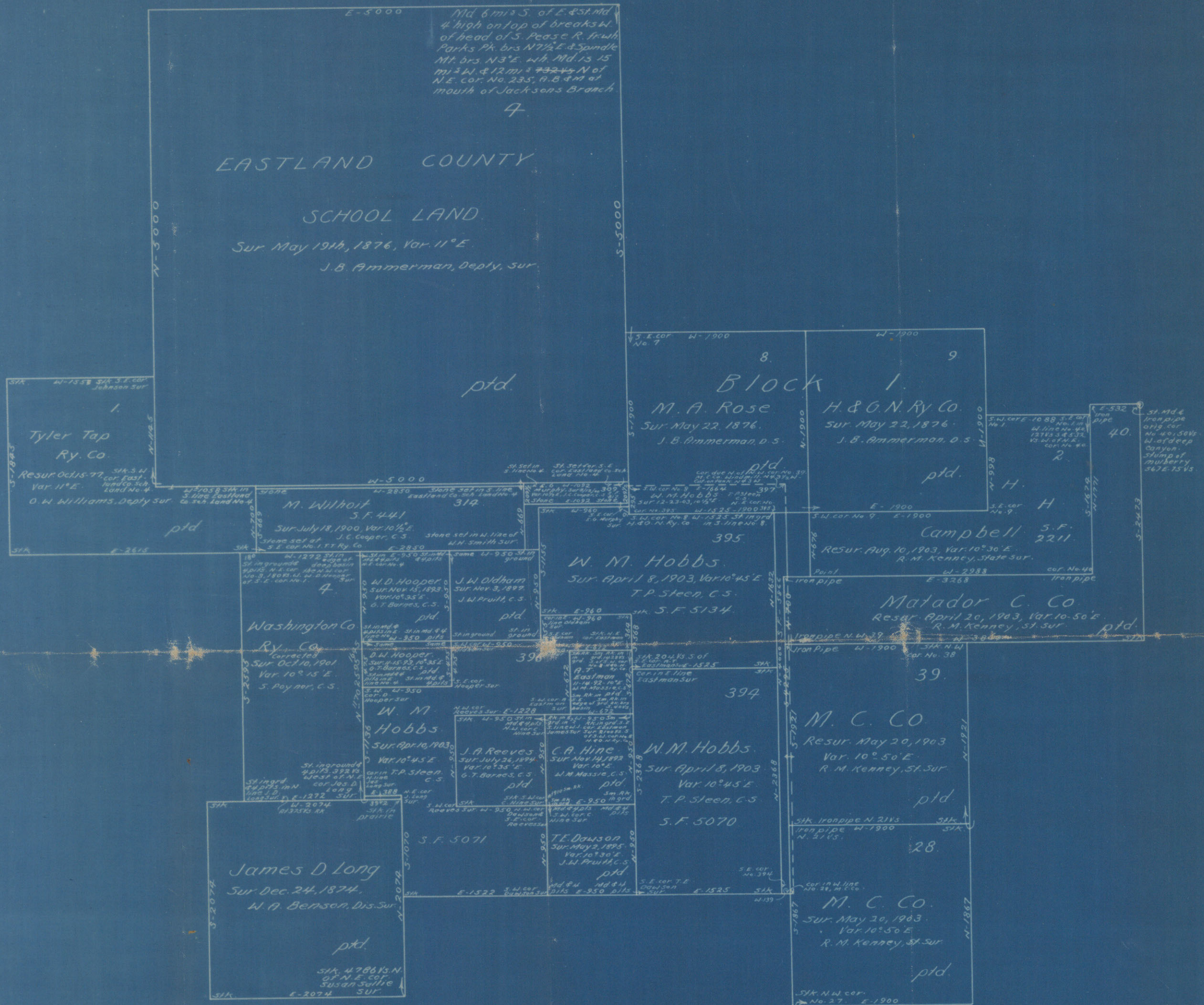
Scale 1" = 600 VRG

Surveyed 9/24-25/1914

G. A. Linder, Co. Sur.
Floyd County.

The circles indicate
points we established.

The squares indicate
points we found.



SKETCH
 FLOYD CO.
 General Land Office, Austin, Texas,
 Feb. 14, 1914.
 Scale: 1000 Vs = 1 Inch

21.
Floyd Co
Sketch file

Letters, sketches & explanations
around the WM Hobbs sur.
Dated Oct 30, 1914
Filed Nov. 4, 1914.