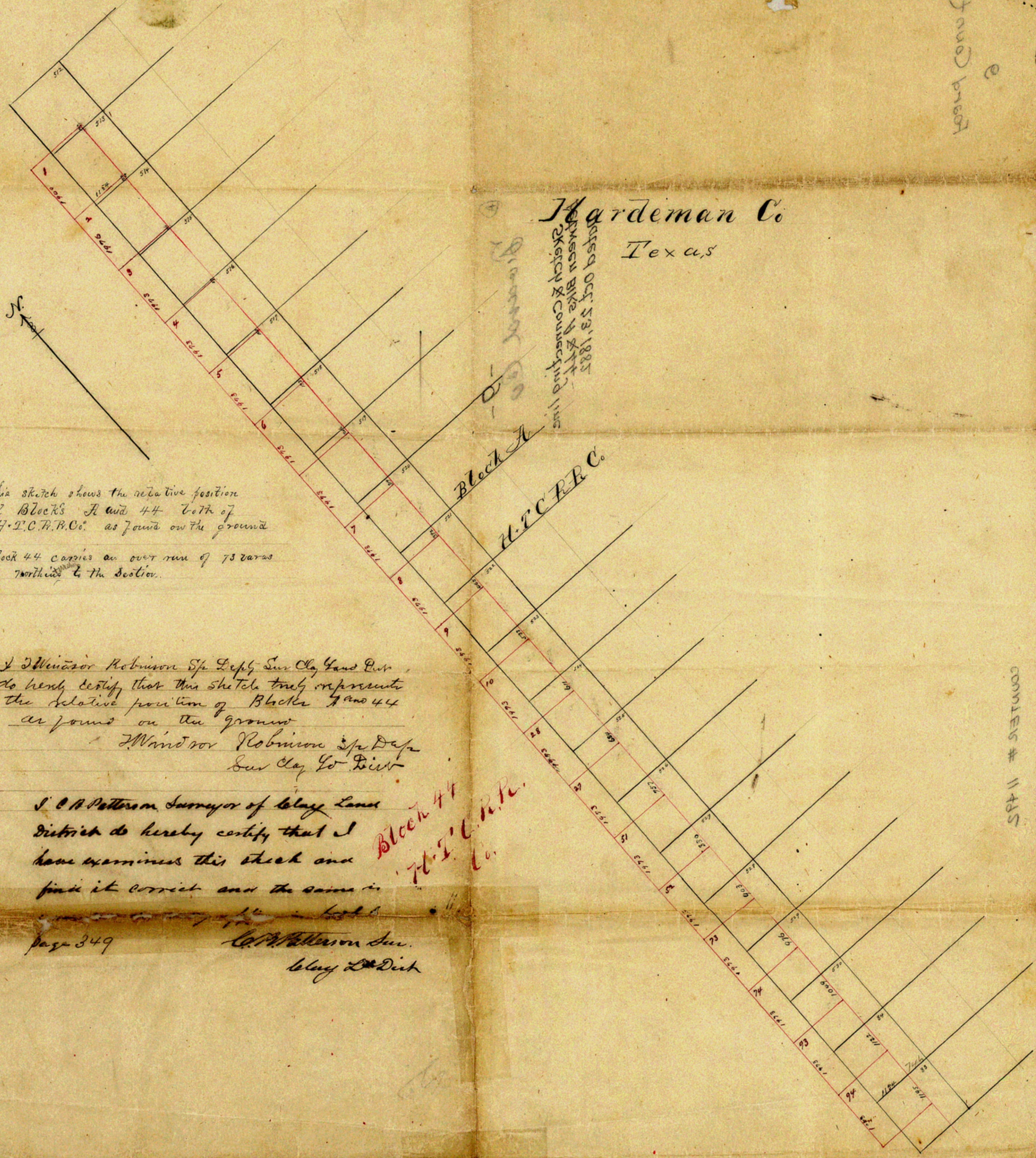


Board Comd  
e

Hardeman Co  
Texas

Based Oct. 23, 1887  
Survey by A. J. J. J.  
Sketch & Connected lines



This sketch shows the relative position  
of Blocks A and 44 both of  
H.C.F.R.C. as found on the ground

Block 44 carries an over run of 73 varas  
in Northward to the Section.

I Windsor Robinson Sp. Depty. Sur. Clay Co. Tex.  
do hereby certify that this sketch truly represents  
the relative position of Blocks A and 44  
as found on the ground

Windsor Robinson Sp. Depty.  
Sur. Clay Co. Tex.

J. C. Patterson Surveyor of Survey Land  
District do hereby certify that I  
have examined this sketch and  
find it correct and the same is

Block 44  
H.C.F.R.C.

page 349

J. C. Patterson Sur.  
Survey Land Dist.

COUNTY # 1145