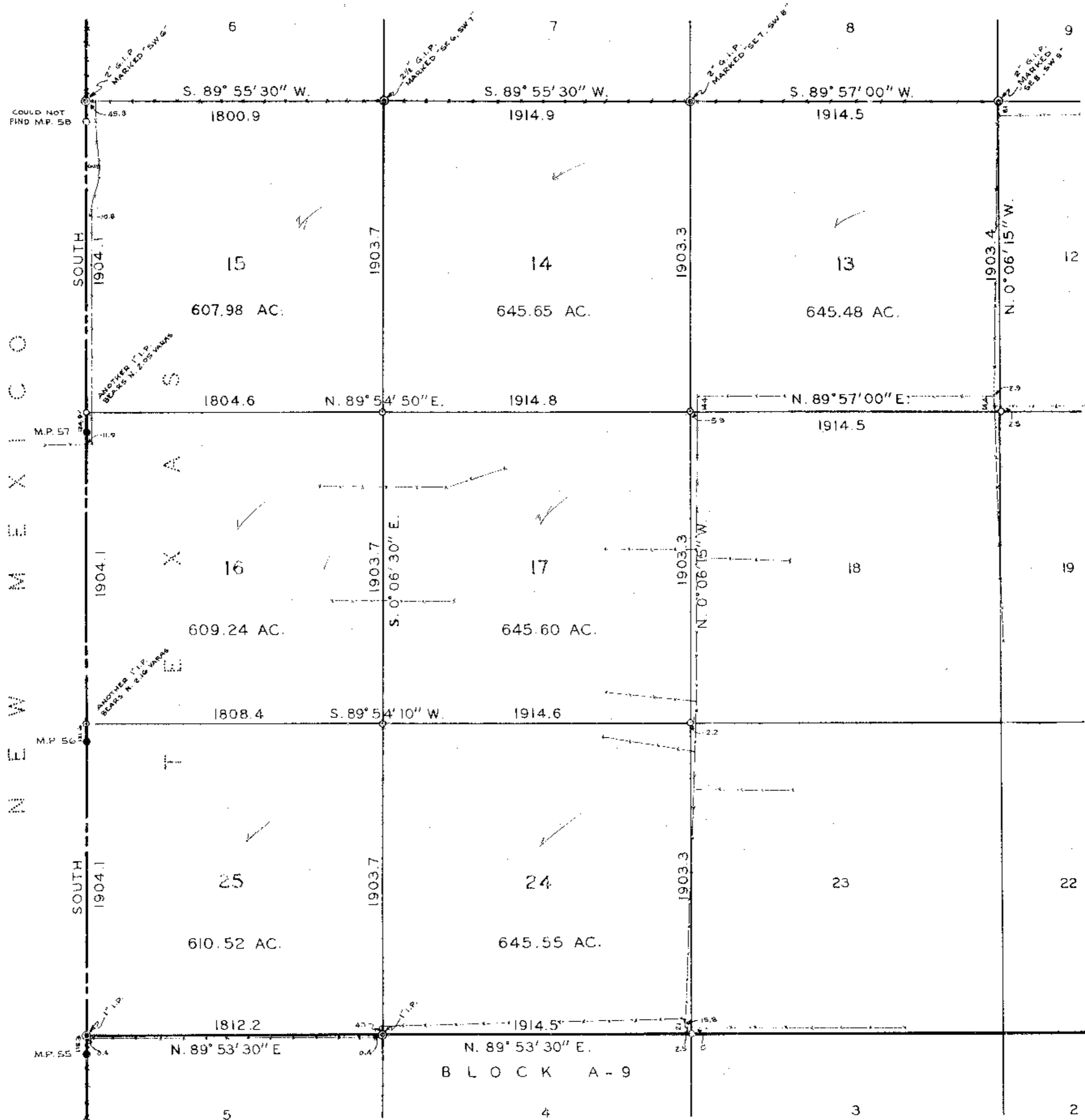


PLAT SHOWING SURVEY OF
SECTIONS 13, 14, 15, 16, 17, 24 & 25, BLOCK A-8
 PUBLIC SCHOOL LAND
GAINES COUNTY, TEXAS

SCALE: 1" = 500 VARAS



© INDICATES CORNERS FOUND ON THE GROUND AND IDENTIFIED AS "PATENT" CORNERS.
 ○ INDICATES 1" IRON PIPES SET ON THIS SURVEY.
 COURSES COMPARED TO COURSE OF NORTH AND SOUTH ON TEXAS-NEW MEXICO STATE LINE.

I, C.A. TUBBS, LICENSED STATE LAND SURVEYOR, HEREBY
 CERTIFY THAT THIS PLAT IS TRUE AND CORRECT AS SURVEYED
 BY ME UPON THE GROUND, NOVEMBER 26 TH. TO DECEMBER 4 TH., 1958.

C.A. Tubbs
 LICENSED STATE LAND SURVEYOR