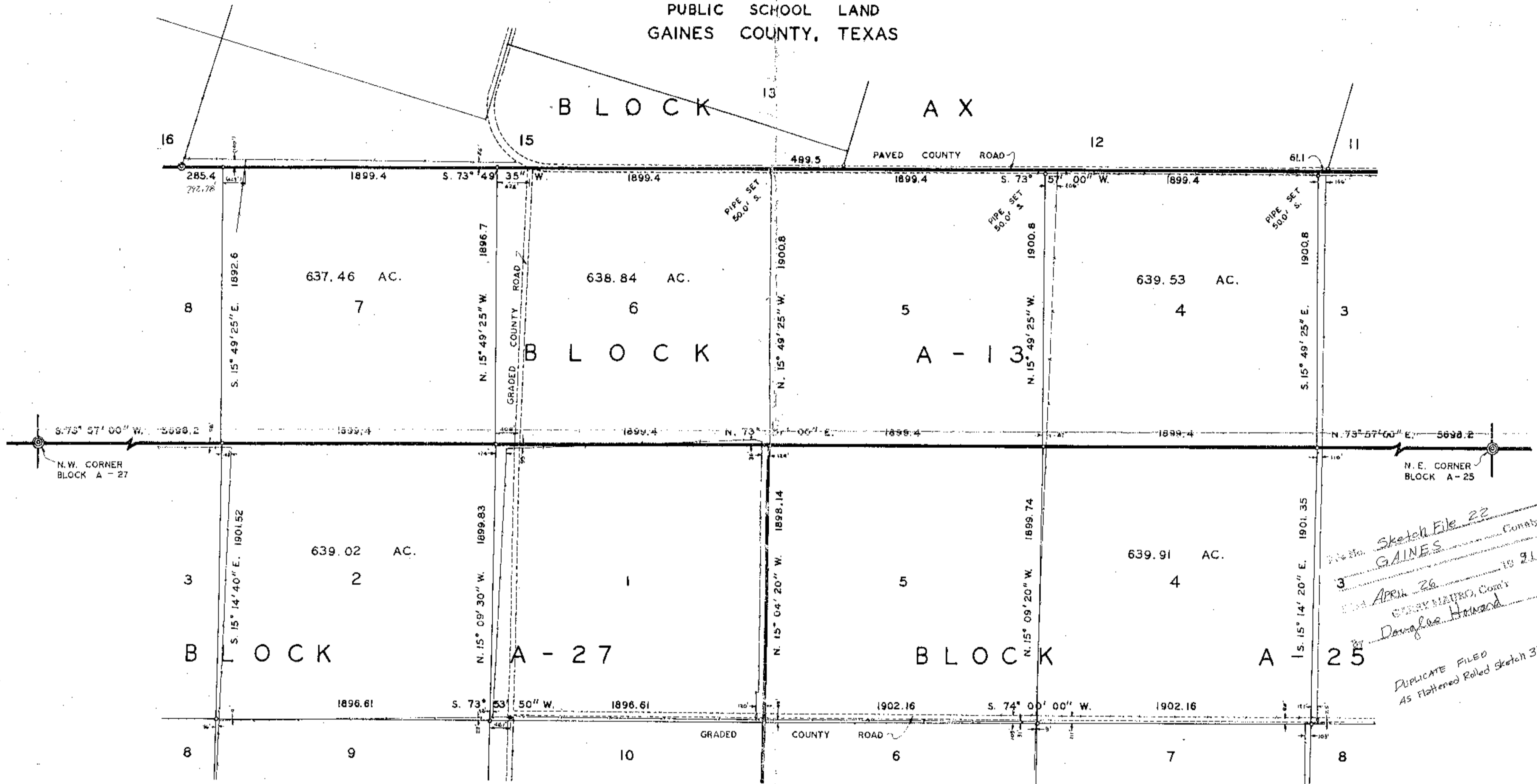


PLAT SHOWING SURVEY OF  
 SECTIONS 4, 6, & 7, BLOCK A-13  
 SECTION 4, BLOCK A-25, SECTION 2, BLOCK A-27  
 PUBLIC SCHOOL LAND  
 GAINES COUNTY, TEXAS



Sketch File 22  
 GAINES County  
 APR 26 1962  
 JERRY MADRO, Com'r  
 Douglas Howard

DUPLICATE FILED  
 AS Flattened Rolled Sketch 31

LEGEND

- ⊙ = ORIGINAL CORNER SET BY D. BOONE.
- ⊙ = 1" G.I.P. SET BY SYLVAN SANDERS.
- = 1" IRON PIPE SET ON THIS SURVEY.

NOTE:

ALL TIES TO FENCES, ROADS, ETC.  
 ARE SHOWN IN FEET.

ALL COURSES COMPARED TO MERIDIAN  
 THROUGH U. S. G. S. TRIANGULATION  
 STATION "DALMONT".

I, C. A. TUBBS, LICENSED STATE LAND SURVEYOR,  
 HEREBY CERTIFY THAT THIS PLAT IS TRUE AND  
 CORRECT AND THAT THE SECTIONS SHOWN HEREON  
 WERE CONSTRUCTED AS DIRECTED IN LETTER DATED  
 MAY 29, 1962 ADDRESSED TO C. A. TUBBS AND  
 SIGNED BY JERRY SADLER, COMMISSIONER OF THE  
 GENERAL LAND OFFICE. SURVEYS MADE DURING  
 MAY AND JUNE, 1962.

*C. A. Tubbs*  
 LICENSED STATE LAND SURVEYOR.

GAINES COUNTY



J.N.N.

SCALE: 1" = 500 VARAS