

See our letter to H. C. Hord, Sweetwater
April 8/99.

State of Texas }
Scurry County } J. A. M. German, Surveyor of the Scurry County Land
Dist., hereby Certify that I have actually Surveyed on the ground as Shown by the
the accompanying map—the South lines of sects 37. & 38. B. 2. T & N. O. R. R. Surveys,
beginning at the S.E. Cor. of Sect. 37. Said Block No. 2—a Stone md., the original
bearings still Standing. Then West 1900 vrs. found stone md. Continued west 1900 vrs. the
S.W. Corner of Sect. 38. this block. the N.W. Corner of Sect. 1. of the John Z. Linn surveys
bears S 13° W. 665 varas, then North on West Line of Sections 38, 43 & 54 and
found the S.E. Corner of section 103., B. 5. G. H. & H. R. R. survey. as made on the ground
Oct. 1897. by C. W. Woodbridge to be 12 varas west and 200 varas North of this
N.W. Cor. of sect 54 - I also resurveyed on the ground, the sections shown on this
map of Block No. 5., H & G. N. R. R. Co. - also sects 950+951. B. 97. H. & T. C. Ry. Co. and made
Connections with the lines and Corners of Sections 182. of the F. M. and A. J.
Long Sands. I found sect. 1 to Conflict with Sects 128, 129, 130 & 131. B. 5.
H. & G. N. to the Amt of 373 7/10 Acres. and sect. 2. to conflict with sect 131 & 132
same block 6 1/10 Acres - Total 440 3/10 Acres.

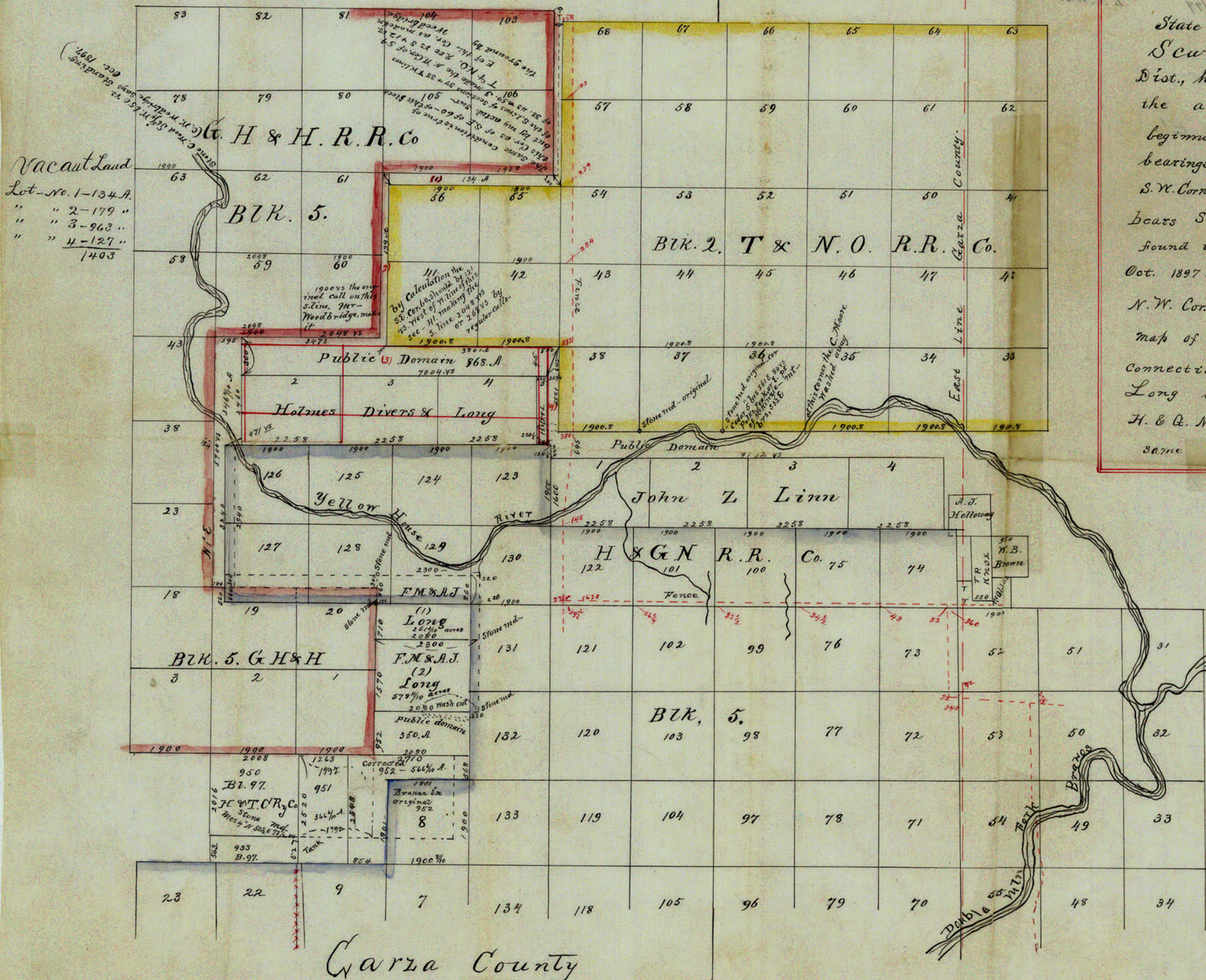
And the Holmes, Divers and Long Survey No. 7 from the
Connections, I made with the N.E. Cor. of sect. 20, B. 5. - also the
most eastern N.E. Cor. of this survey No. 1. in each, a stone mound,
which I found. by estimation it conflicts with sects. 126,
127 + 128 B. 5. H. & G. N. R. R. to the Amt. of 293 4/10 Acres - in all
of the Long + Long, and Holmes, Divers and Long, the conflicts Amt.
to 733 7/10 Acres - The Conflicts of Sect. 19 + 20. G. H. & H. R. R.
B. 5. Amt. to 369 - Acres -

By the Connections I have made with the N.E. Cor. of Sect. 20,
B. 5., G. H. & H. and S.E. Cor. 128. B. 5. H. & G. N. Also with N.E. Cor. 123,
H + G. N. & S.W. 38 & N.W. 54. B. 2. T + N. O. + S.E. Cor. 106 B. 5.
G. H. & H. as made by C. W. Woodbridge, I fail by Calculation
to have Easting enough by 109 vrs. (for some reason I know
not, he makes the South line sect. 59. of G. H. & H. 2048 vrs. instead
of 1900 - original call) by original call the Easting is short to
agree with Woodbridge 257 vrs. the Northings are correct. With
my measurements - the Stone md. at N.E. Cor. Sect. 20. B. 5. G. H. & H.

which I found Corresponds correctly with the Correction of Sects
of said block with the N.E. Corner Sect. 951. B. 97. H. & T. C. Ry. Co

Witness my hand this Aug. 4th 1898.

J. A. M. German,
County Surveyor Scurry
County Texas.



Vacant Land
Lot - No. 1-134 A.
" " 2-179 "
" " 3-963 "
" " 4-127 "
1403

Carza County

Note: The Cor. No. 60 B. 5. G. H. & H. R. R. can
not be separated from Cor. 41. B. 2. T & N. O. R. R.;
Surveys 2, 3, 4 + 5. Holmes, Divers + Long
Should be represented 660 vrs. further North,
as represented in red ink
L. C. Wise.