



General Land Office,

State of Texas.

Austin.

December 14, 1914.

J. T. ROBISON, COMMISSIONER.
J. M. MELSON, CHIEF CLERK.

County Surveyor Glasscock County,
Garden City, Texas.

Dear Sir:-

I am sending under separate cover one volume containing bound field notes made by State Surveyor T. H. Seay and approved by me of surveys in the N W corner of Glasscock County, and partly in Howard and Martin Counties.

This volume is furnished for the surveyor's records as provided by law. Please acknowledge receipt of same and oblige.

Yours very truly,

E von R/LSN

Commissioner.

mm

S,

fw

Glascock Co. Pop
Sketch file #1

December 14, 1914

Austin

J. T. ROBINSON, COMMISSIONER
J. M. NELSON, CHIEF CLERK

County Surveyor Glascock County,
Garden City, Texas.
Dear Sir:-

I am sending under separate cover one
volume containing bound field notes made by
State Surveyor T. H. Gray and approved by me as of
survey in the N W corner of Glascock County, and
partly in Howard and Martin Counties.

This volume is furnished for the surveyor's
records as provided by law. Please acknowledge
receipt of same and oblige.

Yours very truly,

Commissioner

J. T. ROBINSON

G²

11223

87088

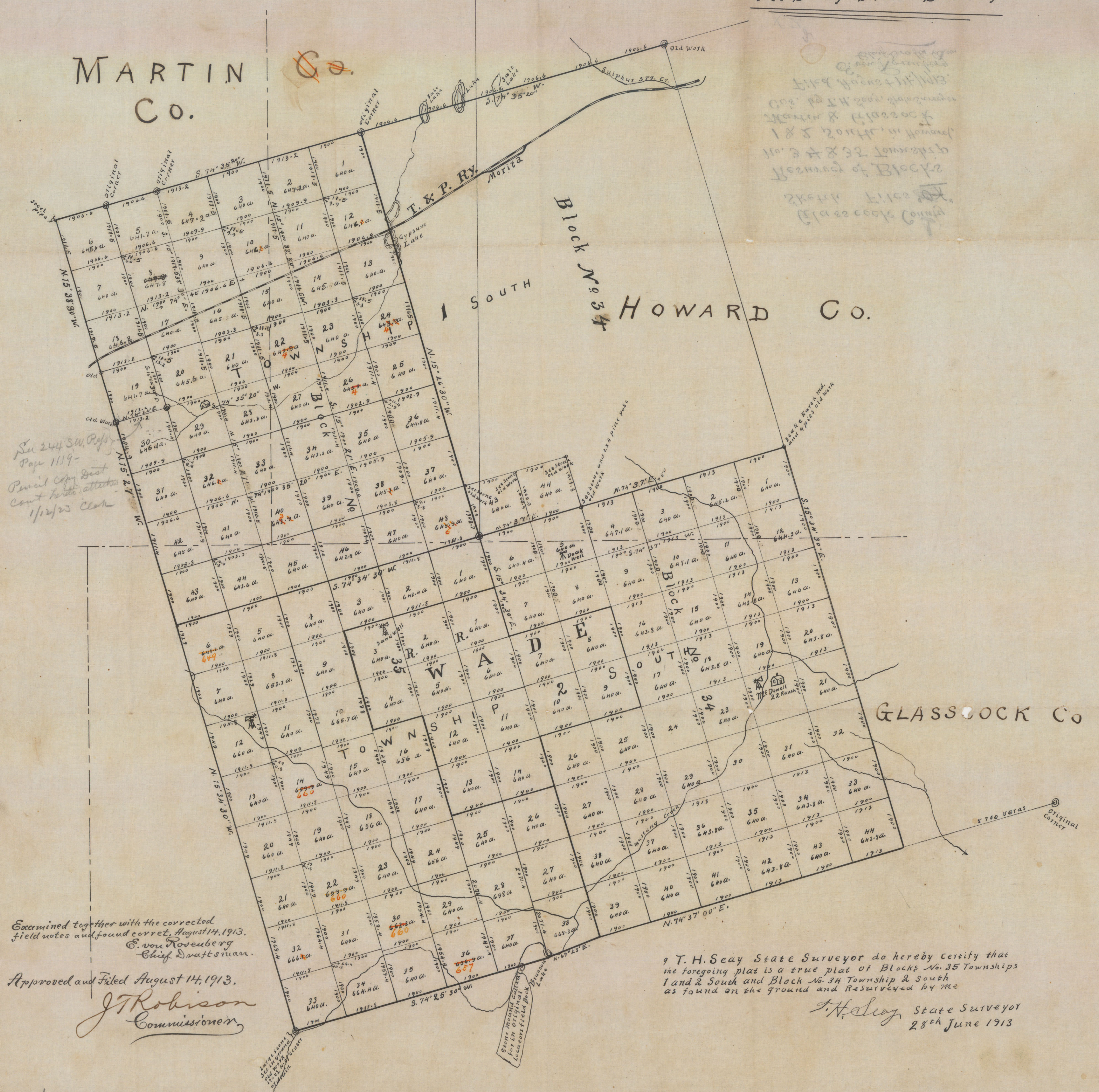
PLAT. "OX" FROM HOWARD. MARTIN. AND. GLASSCOCK. COUNTIES

Showing Resurvey of Blocks No. 34 Township 2
South and 35 Township 1 and 2 South
Texas & Pacific Ry. Co. Reservation
Scale 2000 Varas to 1 inch
Compiled and Drawn by
T.H. Seay State Surveyor

MARTIN
Co.

Block No. 34
1 SOUTH
HOWARD Co.

GLASSCOCK Co



See 244 SW Ref
Page 1119 -
Permit Copy Dist
Court books attached
1/12/23 CLM

Examined together with the corrected
field notes and found correct, August 14, 1913.
E. von Rosenberg
Chief Draftsman.

Approved and Filed August 14, 1913.
J.T. Robinson
Commissioner

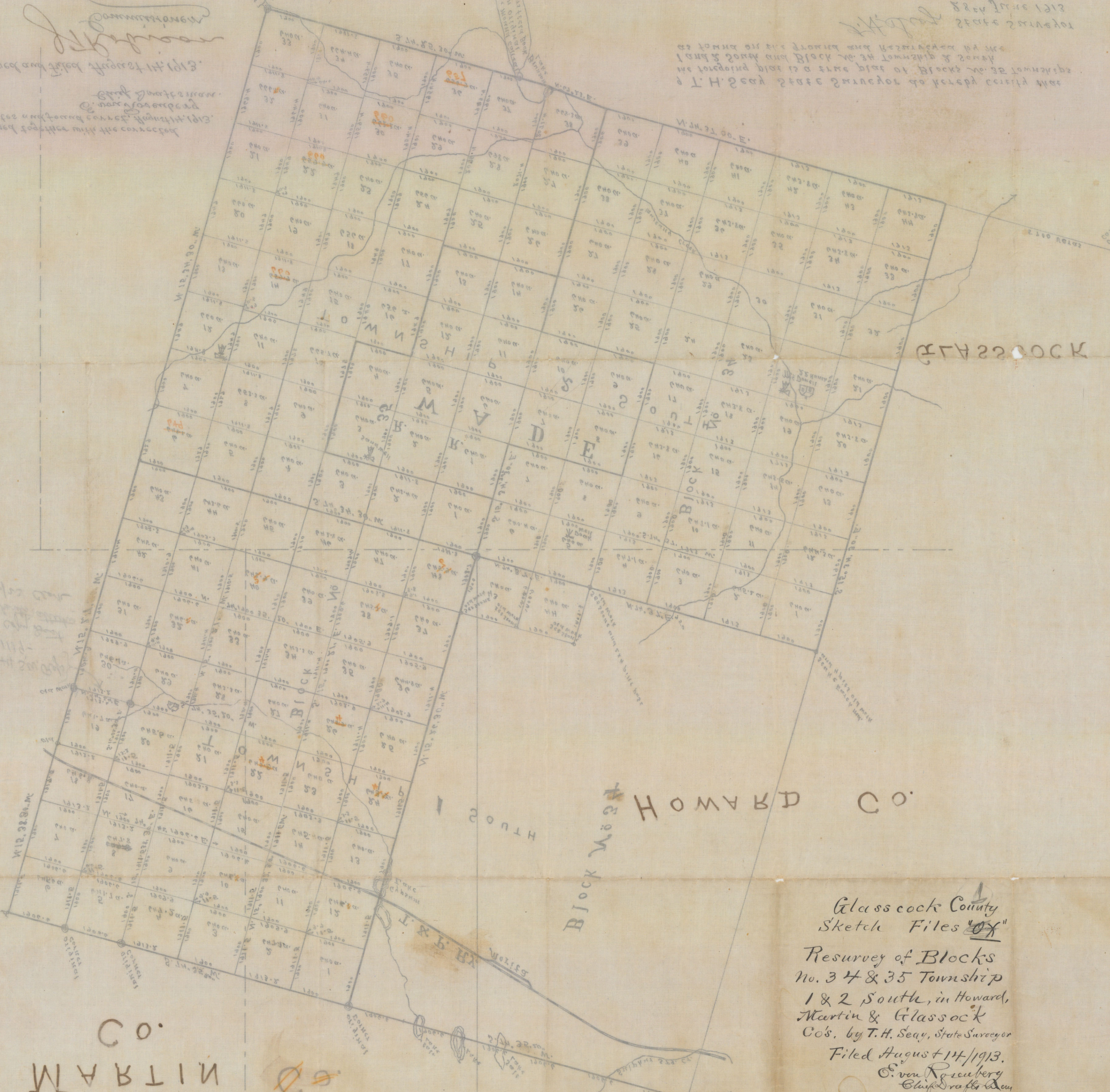
I, T.H. Seay State Surveyor do hereby certify that
the foregoing plat is a true plat of Blocks No. 35 Townships
1 and 2 South and Block No. 34 Township 2 South
as found on the ground and Resurveyed by me

T.H. Seay State Surveyor
28th June 1913

x2

Handwritten notes in the top left corner, including the name "M. H. Seay" and other illegible text.

Handwritten notes in the top right corner, including the name "T. H. Seay" and other illegible text.



Glasscock County
Sketch Files "OX"
Resurvey of Blocks
No. 34 & 35 Township
1 & 2 South, in Howard,
Martin & Glasscock
Cos. by T. H. Seay, State Surveyor
Filed August 11th 1913.
C. von Rosenberg
Chief Draftsman

Compiled and drawn by
Scale 5000 feet to 1 inch
Texas & Pacific L. & Co. Resurvey
Company and 32 Township and 2
showing sections of Blocks No. 34 Township &
GLASSCOCK, MARTIN AND
HOWARD, TEXAS
BY T. H. SEAY

① Glasscock Co. SK. 1

By T. H. Seay, State Surveyor
Howard, Martin & Glasscock
Counties.

Filed August 14, 1913, -

Blk 34. Twp 3 S. filed 10/5/29

Surveys in Blks 34 & 35, Twp 3 S.
in Glasscock, Howard & Martin Cos

Sk. File ~~OK~~ is in this file

GENERAL LAND OFFICE
AUSTIN, TEXAS



88101

Q