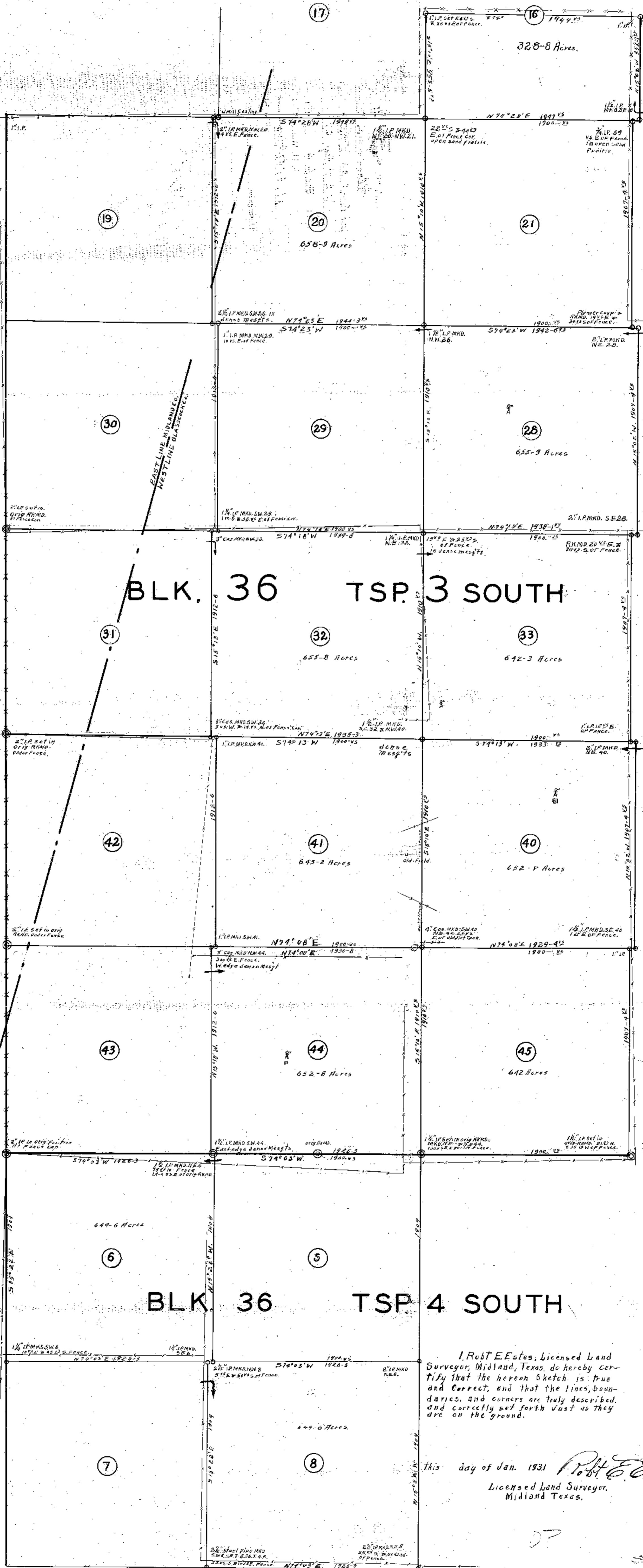


SKETCH OF PORTIONS OF MIDLAND AND GLASSCOCK COUNTIES



I, Robt E. Estes, Licensed Land Surveyor, Midland, Texas, do hereby certify that the hereon sketch is true and correct, and that the lines, boundaries, and corners are truly described, and correctly set forth just as they are on the ground.

This day of Jan. 1931 *Robt E. Estes*
 Licensed Land Surveyor,
 Midland Texas.