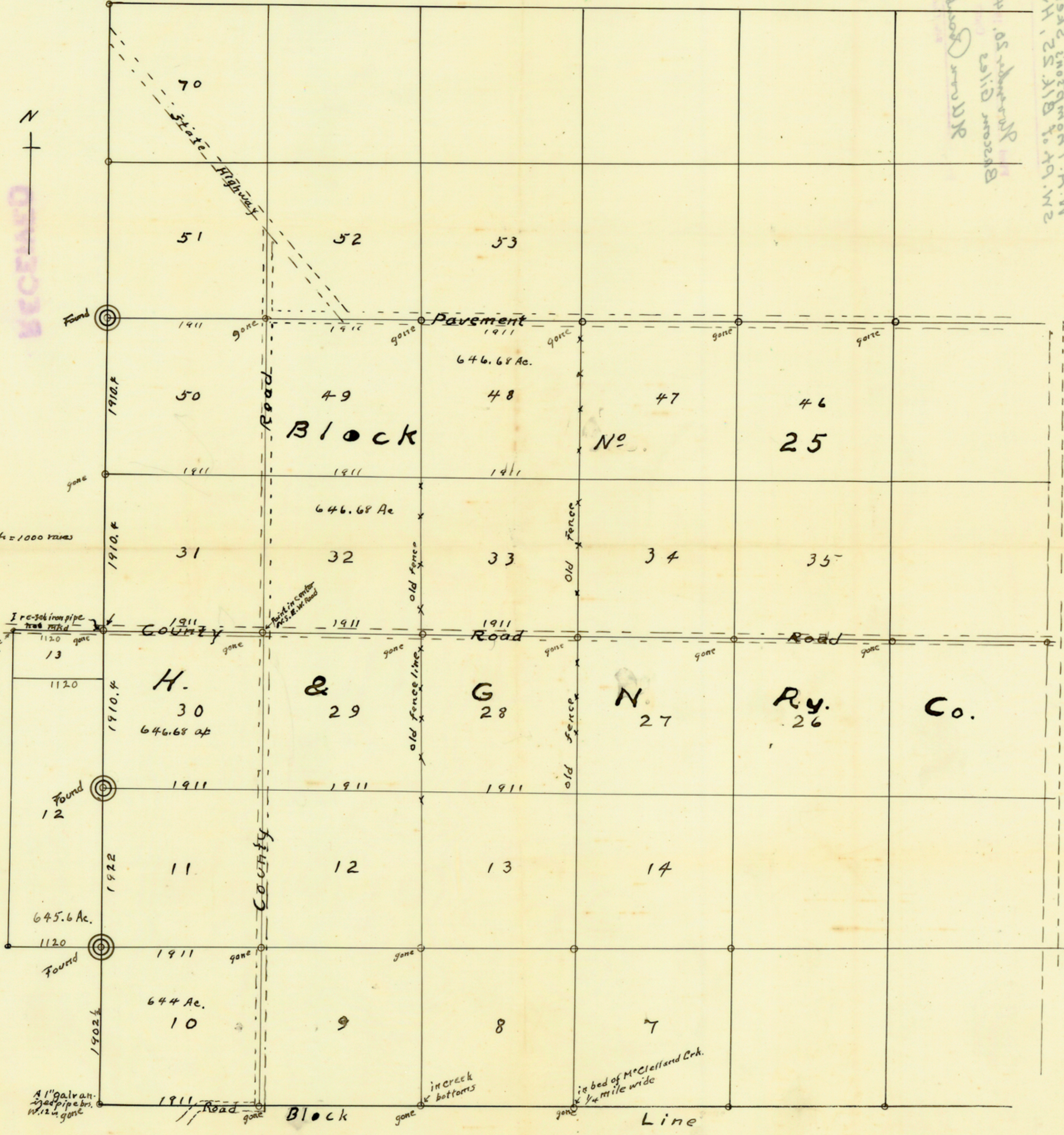


Sketch of lands in Gray County - part of Blk. 25, H & G N Ry. Co. Survey  
 also sections 12 & 13 Blk. S. J. B. Stubblefield

RECEIVED  
 40A TS 1946



Scale 1 inch = 1000 ft



W.A. Thompson  
 Blk. 25, H & G N Ry. Co. Survey  
 also sections 12 & 13 Blk. S. J. B. Stubblefield

CONTESTED 11/2/48

D738

Surveyed by W.A. Thompson L.S.L.S. Oct. 1946

SKETCH FILE No. 13  
 COUNTY GRAY