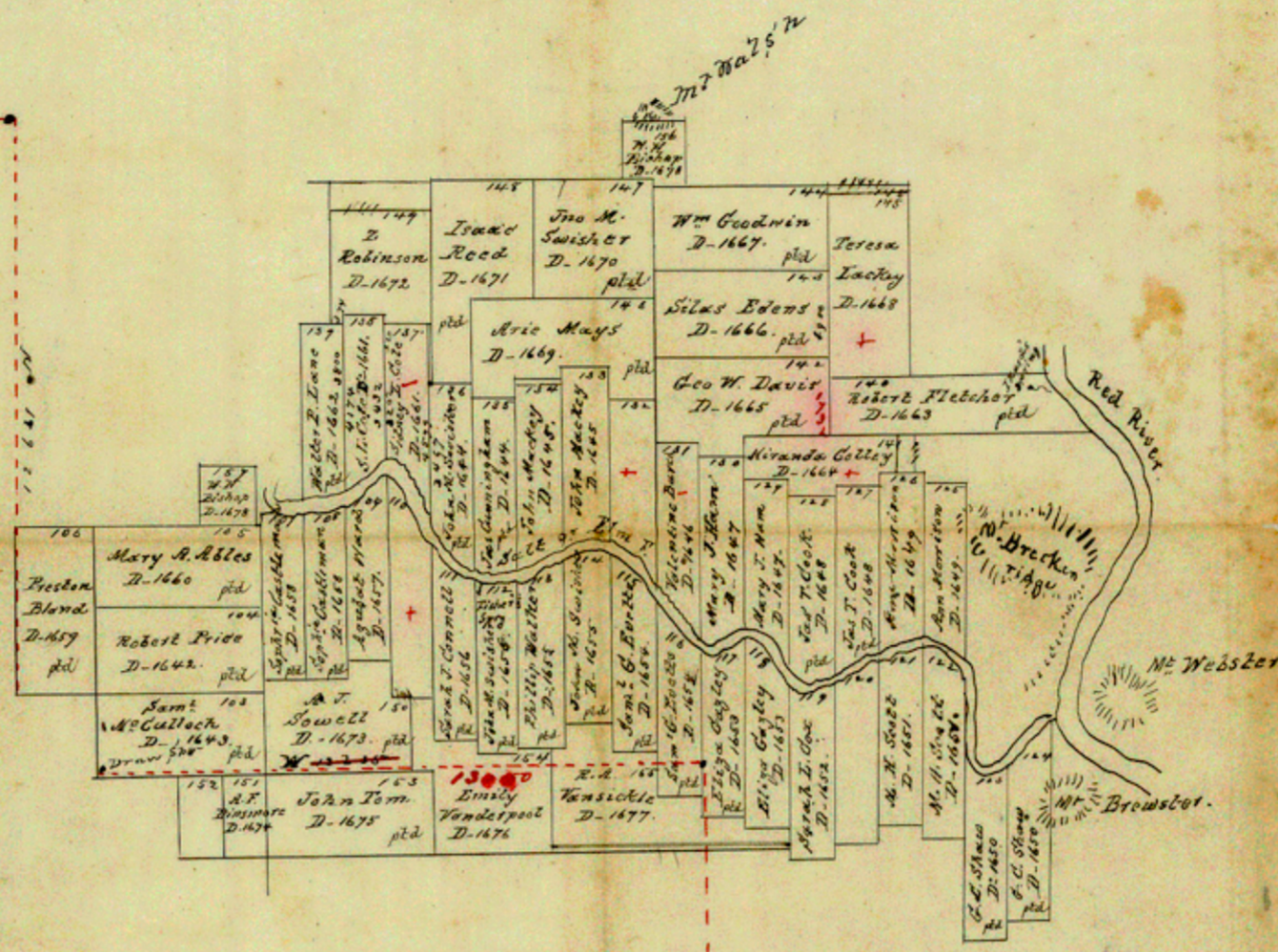


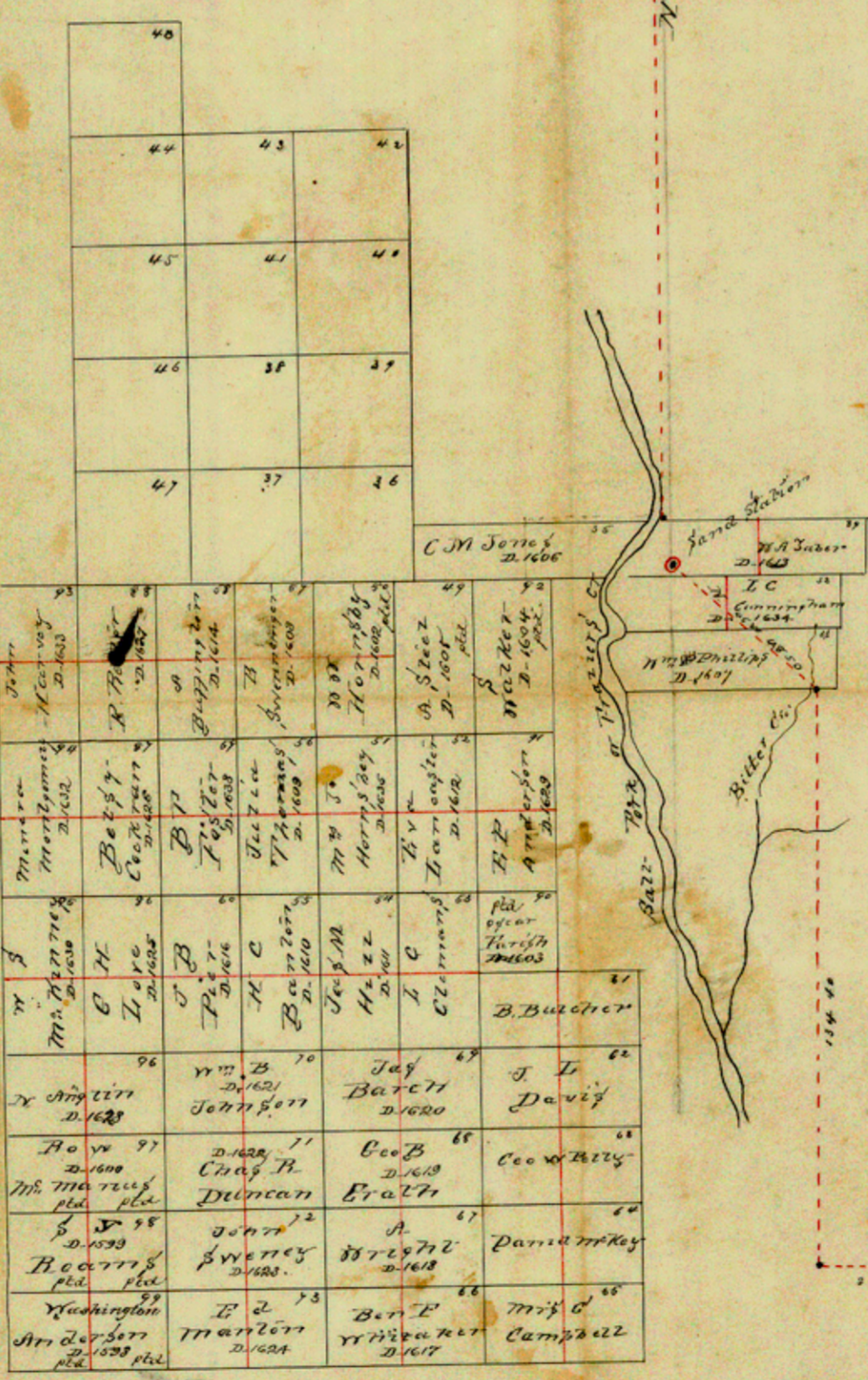


Imperial Tracing Cloth

11	12	13	14
Stewart D. 1835 pld	15	16	17
Anna M. Bryan D. 1847	18	19	20
Academy Wiley D. 1850 pld	21	22	23
C. C. Byrnes D. 1857 pld	24	25	26
127	128	129	130
131	132	133	134



Patterson's sk of this land  
 May stock Co and salt fork  
 dated July 31, 1883  
 Filed Aug. 18, 1883



Scale 4000 ft 1 inch

C. B. Patterson Surveyor of Clay Land  
 District as heroby certity that this is a true  
 and correct copy of Map of Survey in Green  
 County made by W. C. Slocum Deputy Surveyor of  
 Clay District

Henrietta July 31<sup>st</sup> 1883  
 C. B. Patterson Sur  
 Clay Dist  
 Filed August 18<sup>th</sup> 1883.  
 D. A. Robinson  
 Chf. Clerk.

