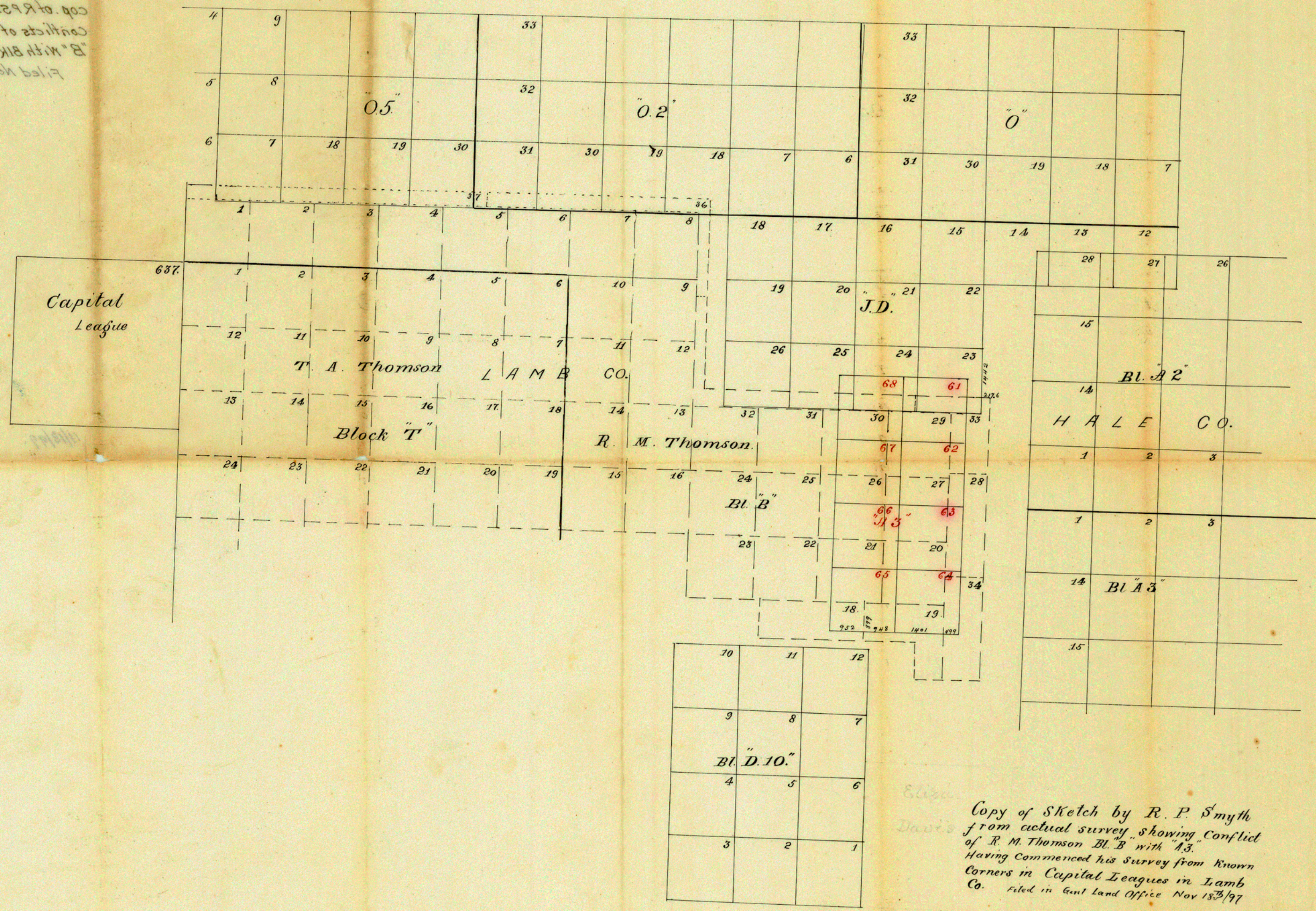


Filed Nov. 18, 1897.
 B. with BK "A3".
 Conflicts of R. M. Thomson's BK
 Cop. of R. P. Smyth's SK showing
 Hale Co.



Copy of Sketch by R. P. Smyth
 from actual survey showing Conflict
 of R. M. Thomson Bl. B with "A3".
 Having Commenced his Survey from known
 Corners in Capital Leagues in Lamb
 Co. Filed in Genl Land Office Nov 18th 1897