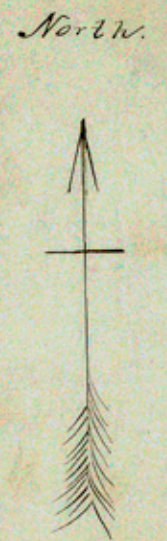


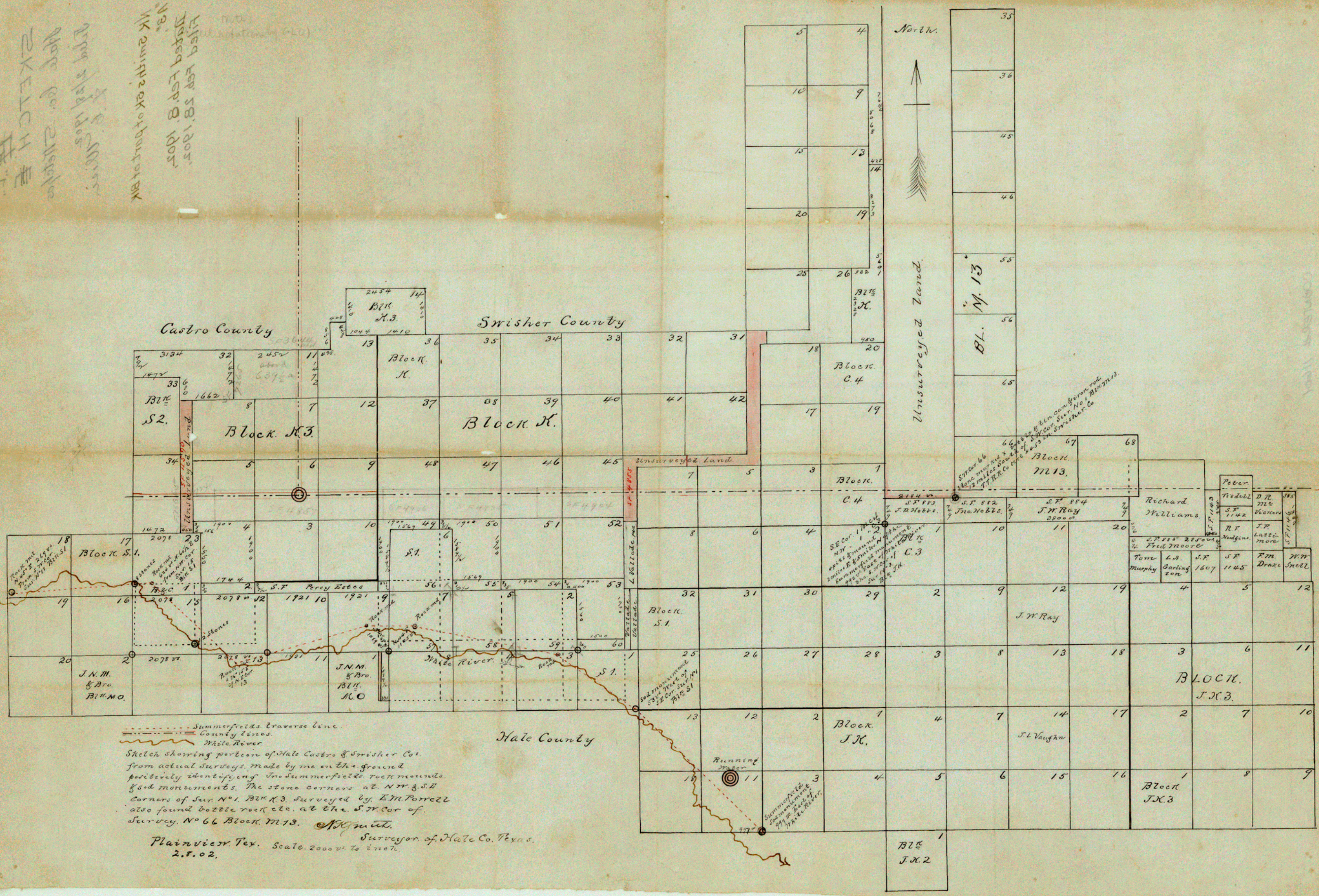
SKETCH #1
 Map for 21st Sept
 1892
 J. S. Miller

Filed for 58, 1905
 Indexed for 8, 1905
 NK 21st Sept of 1892

North



Unsurveyed Land.



--- Summerfield's traverse line
 --- County lines
 ~~~~~ White River

Sketch showing portion of Hale Castro & Swisher Co.  
 from actual surveys made by me on the ground  
 positively identifying the Summerfield's rock mounds  
 & sd monuments. The stone corners at NW & SE  
 corners of Sur No. 1, Blk N.3, surveyed by E.M. Powell  
 also found bottle rock etc. at the SE cor of  
 Survey No 66 Block M.13. *J.S. Miller*

Plainview, Tex. Scale 2000 ft. to inch.  
 2.8.02. Surveyor of Hale Co. Texas.