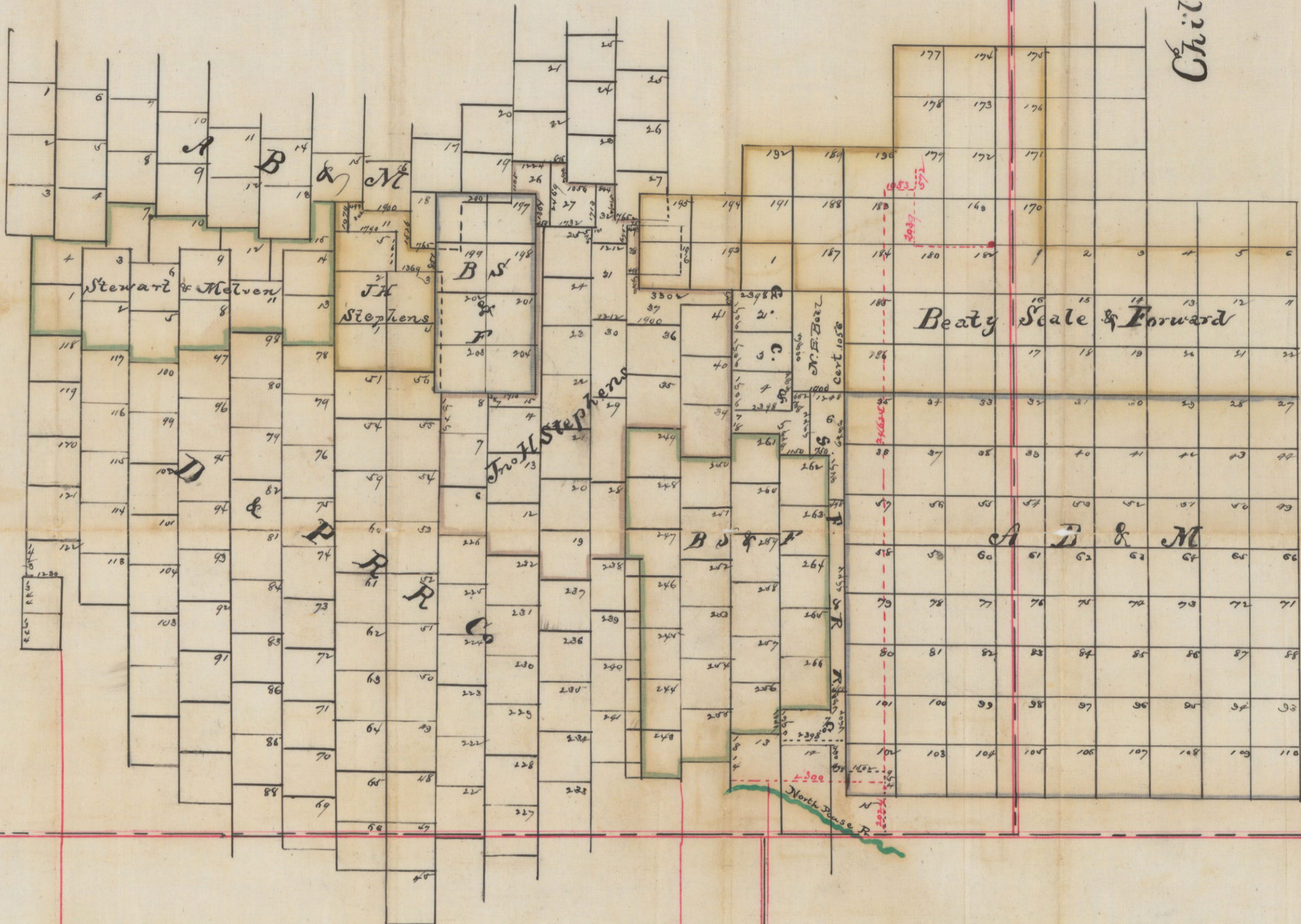


W.A.L.L. C O

Childress Co



Mottley Co

Cottle Co

I, J. S. McCallum, Surveyor of the Donley Land District  
do hereby certify that the above sketch is true  
and correct, and made from original field notes  
now on record in my office.

July 21, 1884.

J. S. McCallum  
Surveyor

~~10~~<sup>5</sup>  
Hall County  
Sketch file 5.

Dated July 21, 1884.

Filed July 28/84

Chief Clk.

No. 18.  
Conn. Valley Mills.