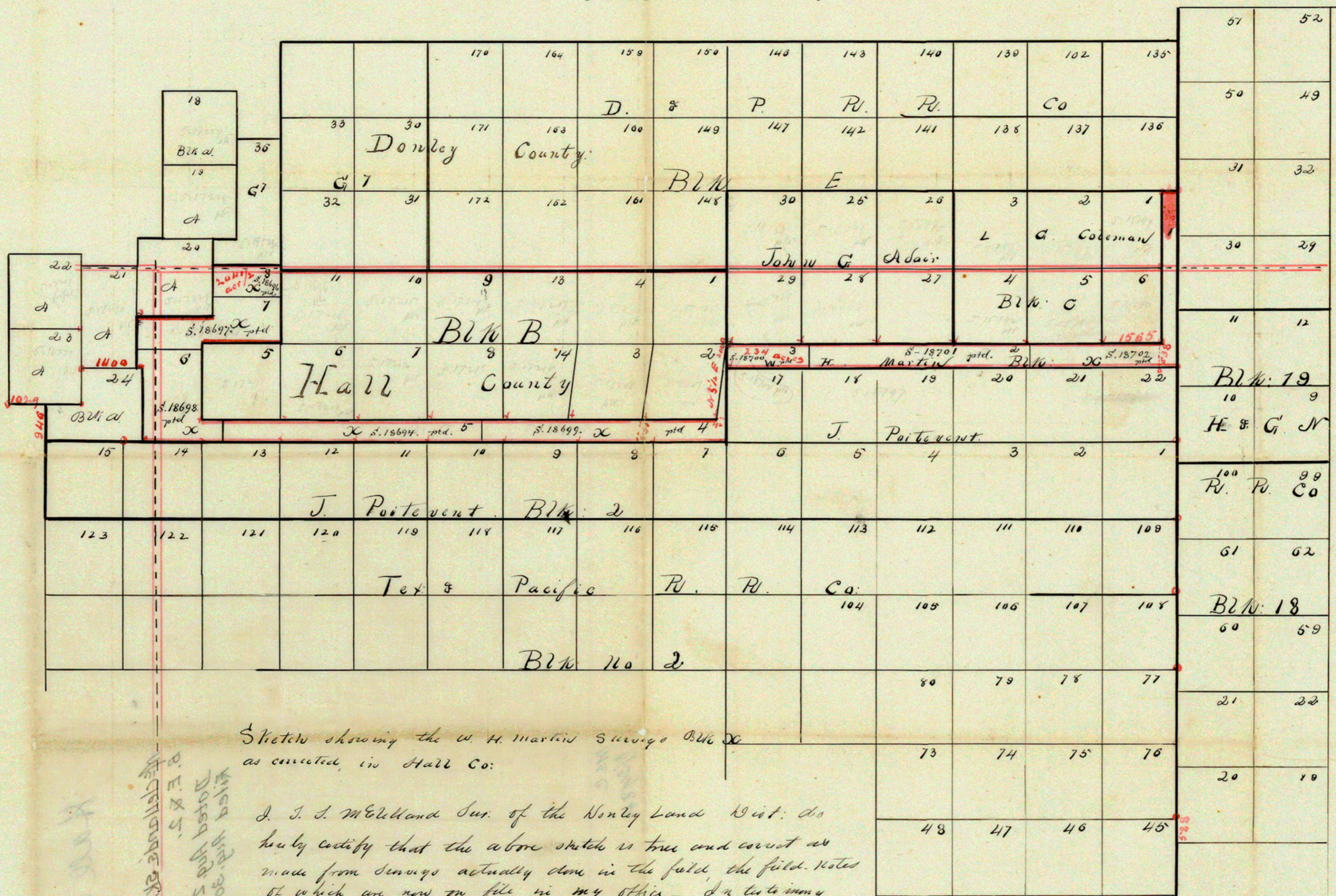


Scale 2000 yds. = 7 inch



Sketch showing the W. H. Martin's survey Bk. No. 2 as corrected, in Hall Co.

I, J. S. McEllland Sur. of the Donley Land Dist. do hereby certify that the above sketch is true and correct as made from surveys actually done in the field, the field notes of which are now on file in my office. In testimony thereof I hereby affix my signature this the 22nd day of August A. D. 1884.

J. S. McEllland
Sur. Donley Land Dist.

Filed August 30/84
See Connection to this sketch

Filed Aug 30, 1884
 Dated Aug 25, 1884
 J. S. McEllland
 Sur. Donley Land Dist.

See statement of George Spiller as to position of Block of Poitevent no. 2 & P. O. R. B. Co. Block 2 dated June 13th 1884
 Book in D. L. D. Vol. 119. & filed in No. August 30th 1884