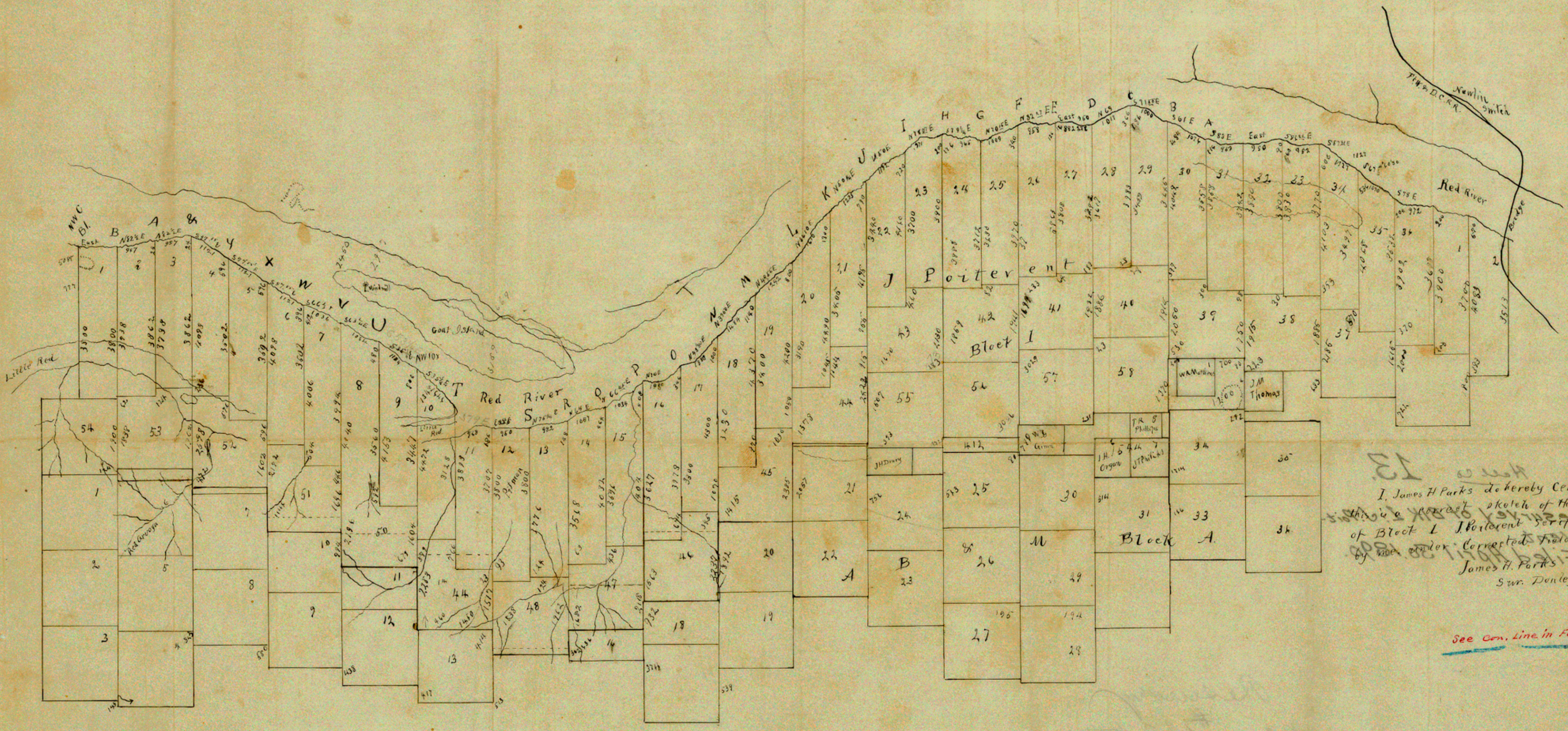


Hall Co.



I, James H Parks do hereby Certify that
 this is a correct sketch of the Re-survey
 of Block I Portierent as made
 by James H Parks
 James H. Parks
 Svr. Donley Land Dist.

See Con. Line in Fann. P. 3756

See sketch 'C'

Filed April 30/90
 Plat accompanying corrected field notes
 made by James H. Parks
 C. von Rosenberg Draftsman