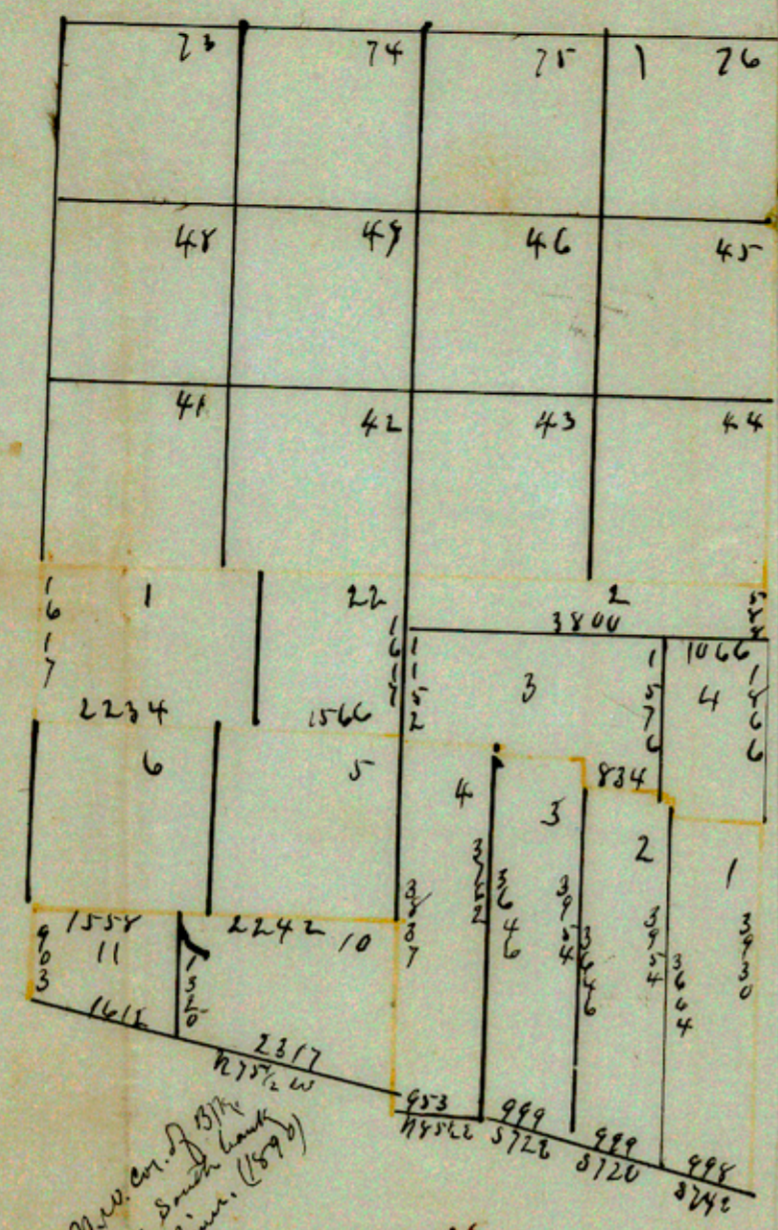
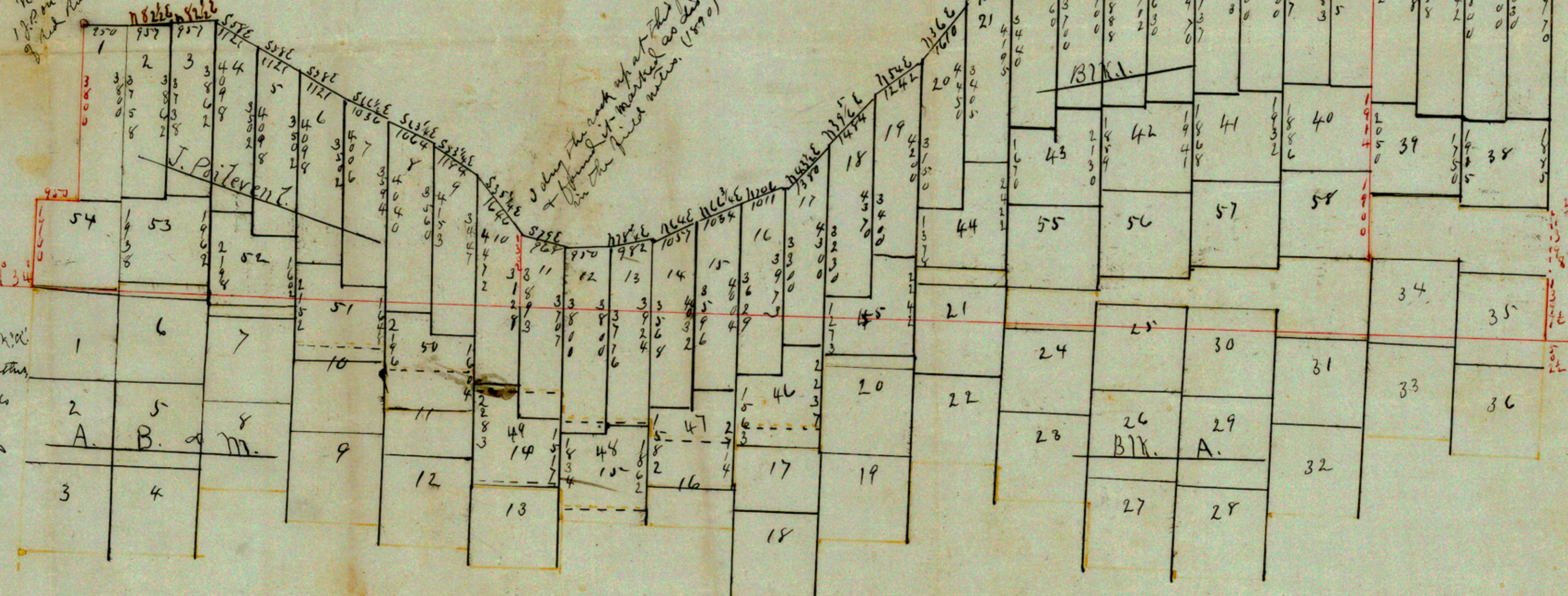


H. S. Park
 2 October
 Office City of Hall
 City of Hall
 1871



Chain of stakes
 which was
 located from the
 central monument.

Found this line
 in field notes (1871)



Transit Line 93

Sec. 1, 2, 3, 4, 5, & 6 A. B. & M. B.M. lines
 You will see corner with eastings
 while on the "State" map they do
 not. But we did not notice
 but when the state map was
 right & with the 148 rods in
 counting northings & southings
 when we ran the transit.

The green lines are B.M. lines, but were
 drawn 1st. Therefore are on the
 real lines.

The red lines represent the lines
 run by me on the ground & found
 as marked in red figures.
 The field notes used were for record to
 all those made by G. H. Parks in 1870.

Jas. E. Hamner
 County Surveyor
 Hall Geo
 W. J. Haggard Deputy.

1871
 H. S. Park

COMMISSION # 11002