



General Land Office.

State of Texas.

Austin.

March 22, 1912.

J.T. ROBISON, COMMISSIONER.  
J.H. WALKER, CHIEF CLERK.

Mr. W. A. Thompson,  
Surveyor Hall Co.,  
Memphis, Texas.  
Dear Sir:-

For your information see enclosed blue print of a plat by E. R. Clark, showing his work, approved by J. E. Hamm, County Surveyor of Hall county, filed in this office October 13, 1904.

This is to explain the matter which our Mr. von Rosenberg, examining draftsman, discussed with you in person affecting the position of surveys in Block S5, D&P Ry. Co., as fixed on the ground, settled upon and improved accordingly. These surveys are immediately west of and adjacent to Surveys 1 to 6, Block L, Gunter & Munson.

You will find the field notes of the connecting line accompanying the original plat of record in Book PR, Vol. 1, pages 103 to 108, Hall county, surveyor's record. Understand, this data is only to assist you in determining by a resurvey the actual position of the settlers on school and individual sections in Block S5, as to protect them in their improvements if possible, with reference to corners made by Mr. Geo. H. Chipman in his resurvey.

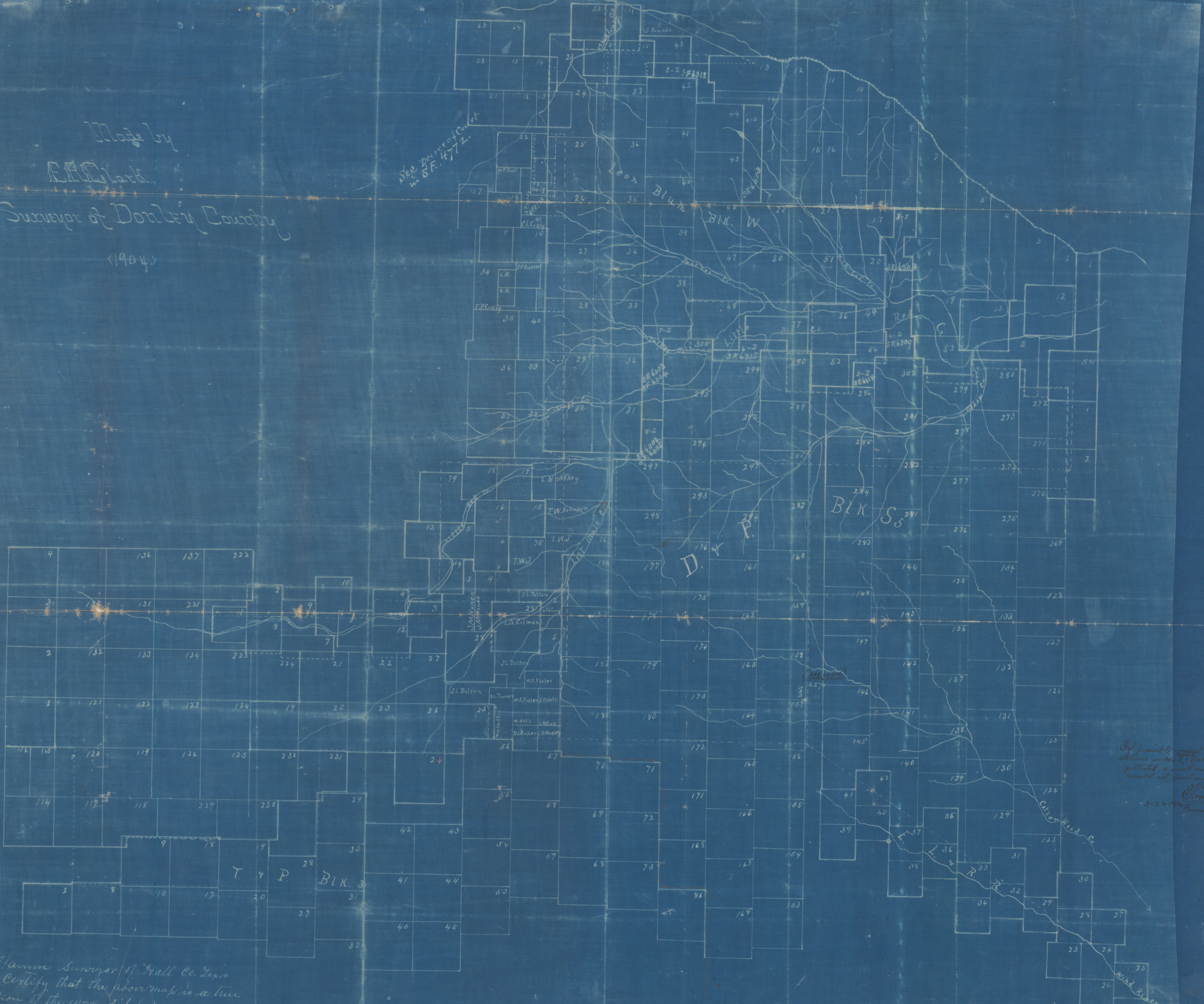
Yours truly,

E. von R./Log.

Acting Commissioner.

Made by  
 E.A. Clark,  
 Surveyor of Douglas County  
 (1904)

See Decree of Court  
 in SF. 4772.



If possible, report the  
 distance in feet (or in  
 feet), a small number  
 would not count as  
 a  
 3-22-1904  
 E.A. Clark

J.C. Hamm Surveyor of Hall Co. Ga. hereby certify that the above map is a true representation of the work done by me and my assistants.

<sup>B<sup>2</sup> 26</sup>  
Hall County  
Sketch files

March 22/1912.

Sketch B<sup>2</sup>

Hamm's SK of Surs. in BIR  
55.

Filed March 22, 1912.