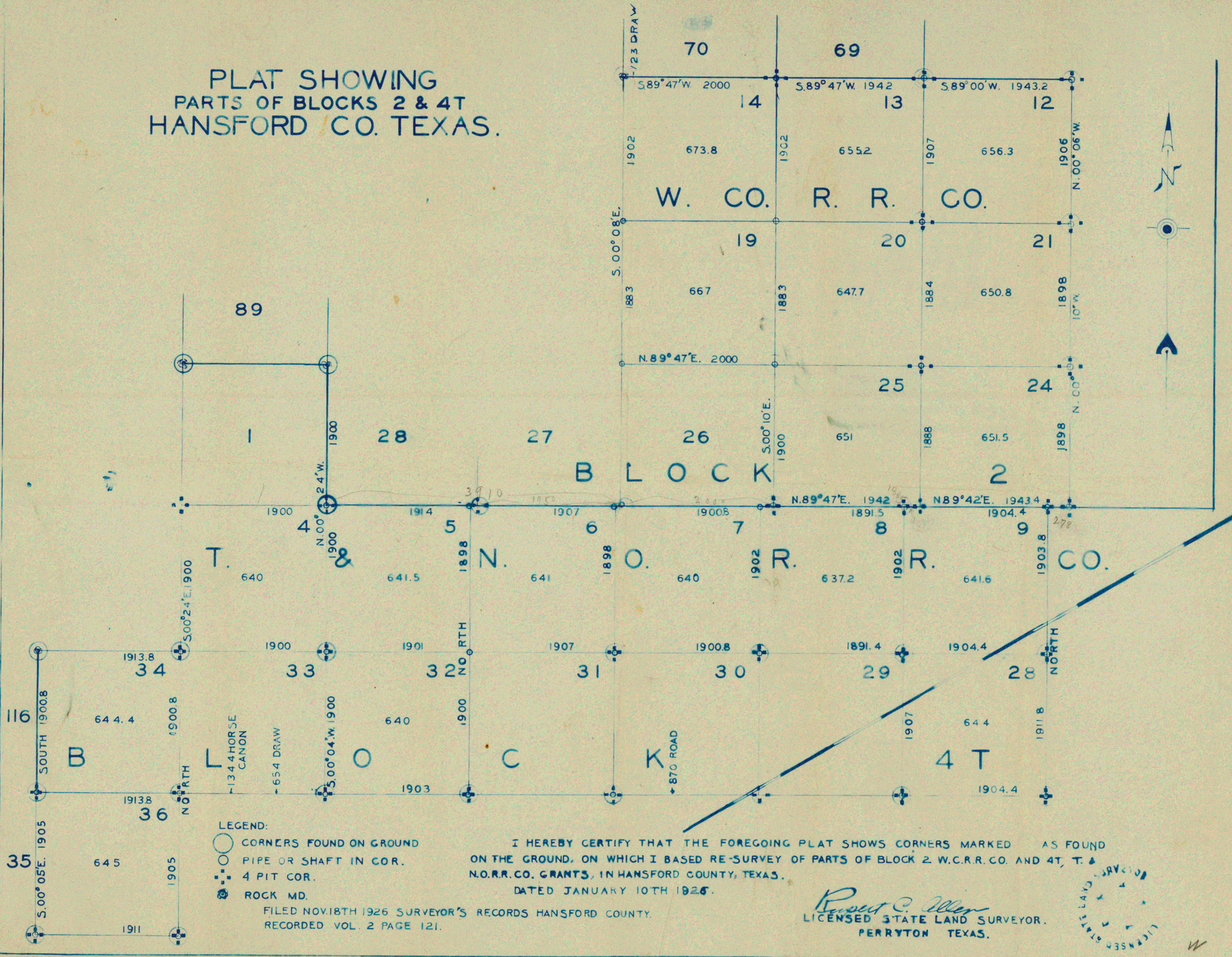


PLAT SHOWING
PARTS OF BLOCKS 2 & 4T
HANSFORD CO. TEXAS.



- LEGEND:
- CORNERS FOUND ON GROUND
 - PIPE OR SHAFT IN COR.
 - ⊕ 4 PIT COR.
 - ⊙ ROCK MD.

I HEREBY CERTIFY THAT THE FOREGOING PLAT SHOWS CORNERS MARKED AS FOUND ON THE GROUND, ON WHICH I BASED RE-SURVEY OF PARTS OF BLOCK 2, W.C.R.R. CO. AND 4T, T. & N.O.R.R. CO. GRANTS, IN HANSFORD COUNTY, TEXAS.
DATED JANUARY 10TH 1926.

FILED NOV. 18TH 1926 SURVEYOR'S RECORDS HANSFORD COUNTY.
RECORDED VOL. 2 PAGE 121.

Russell C. Allen
LICENSED STATE LAND SURVEYOR.
PERRYTON TEXAS.

