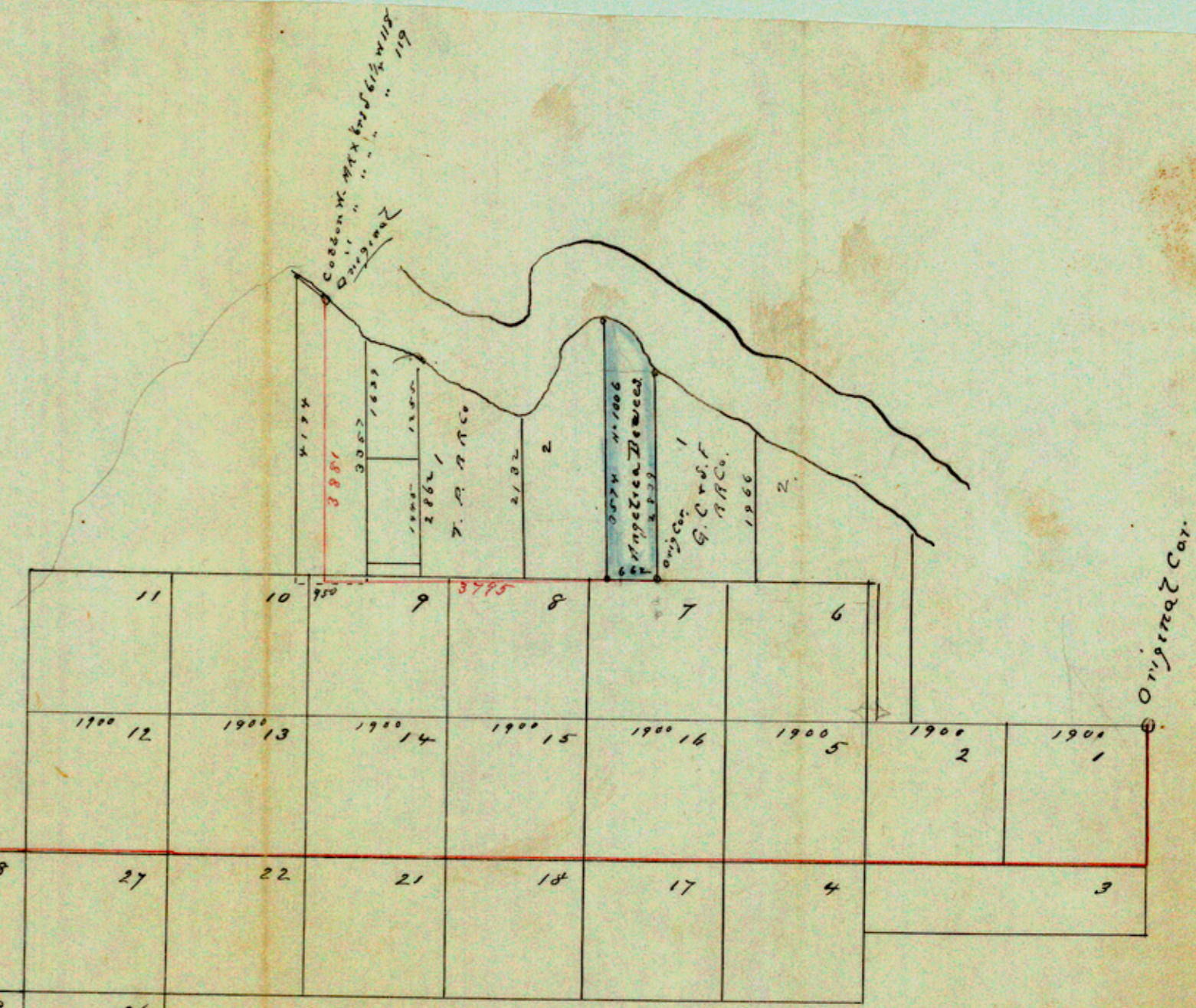
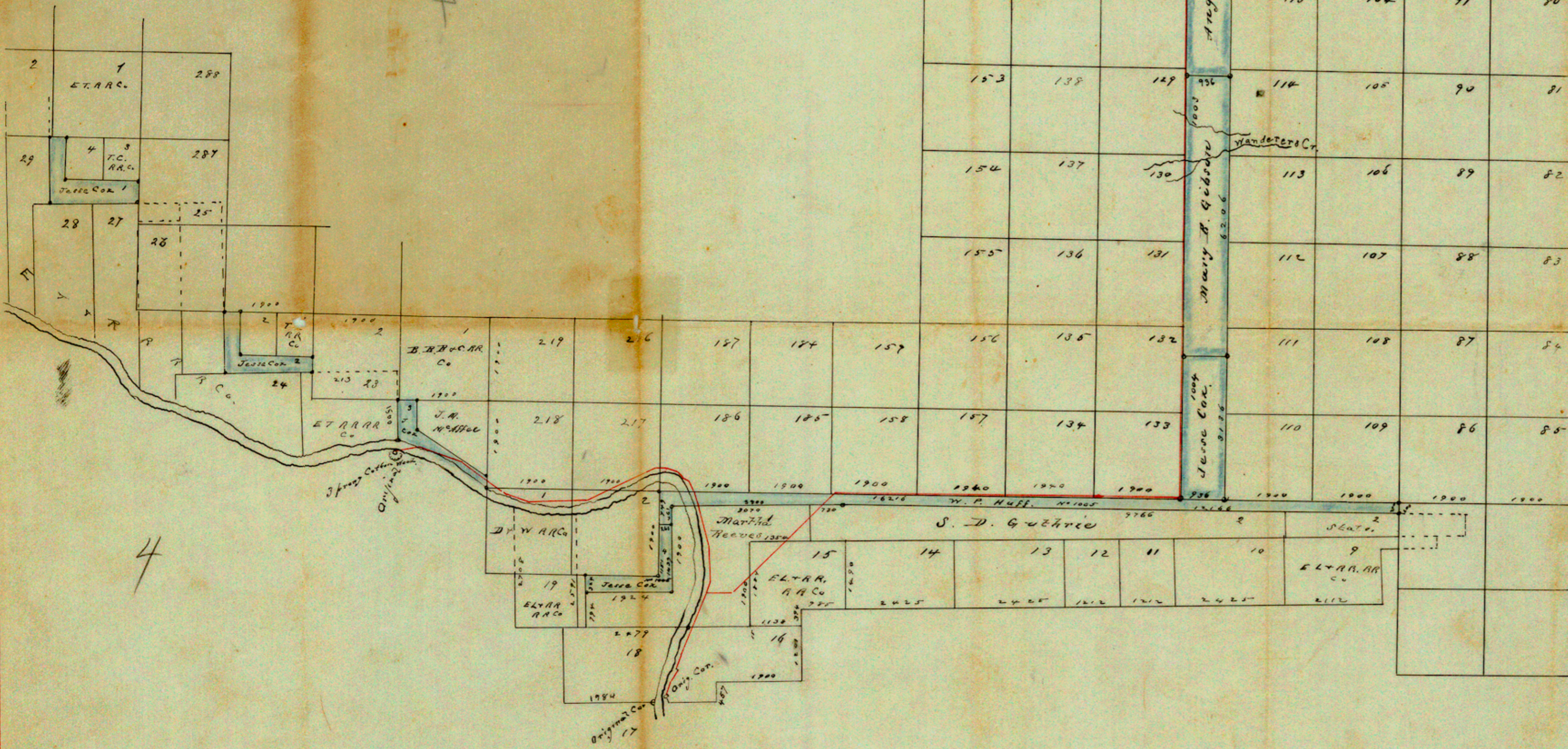


Geo. W. Darby - Surveyor
 Hester H. A.
 Henderson Co.
 Showing BK H.

Filed May 27 1871
 Geo. W. Darby
 Clerk



I, G. W. Darby Surveyor of Hardeman County
 Do hereby Certify that the above sketch is
 correct and that the lines marked in red
 were actually and carefully surveyed
 by me and that the corners marked "Original"
 were actually identified by me.
 Geo. W. Darby
 County Surveyor Hardeman Co

CORRECTED