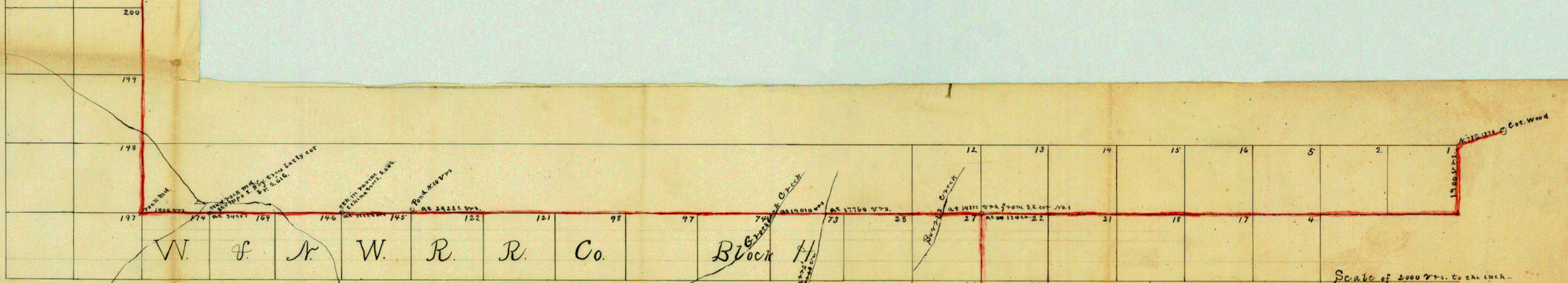
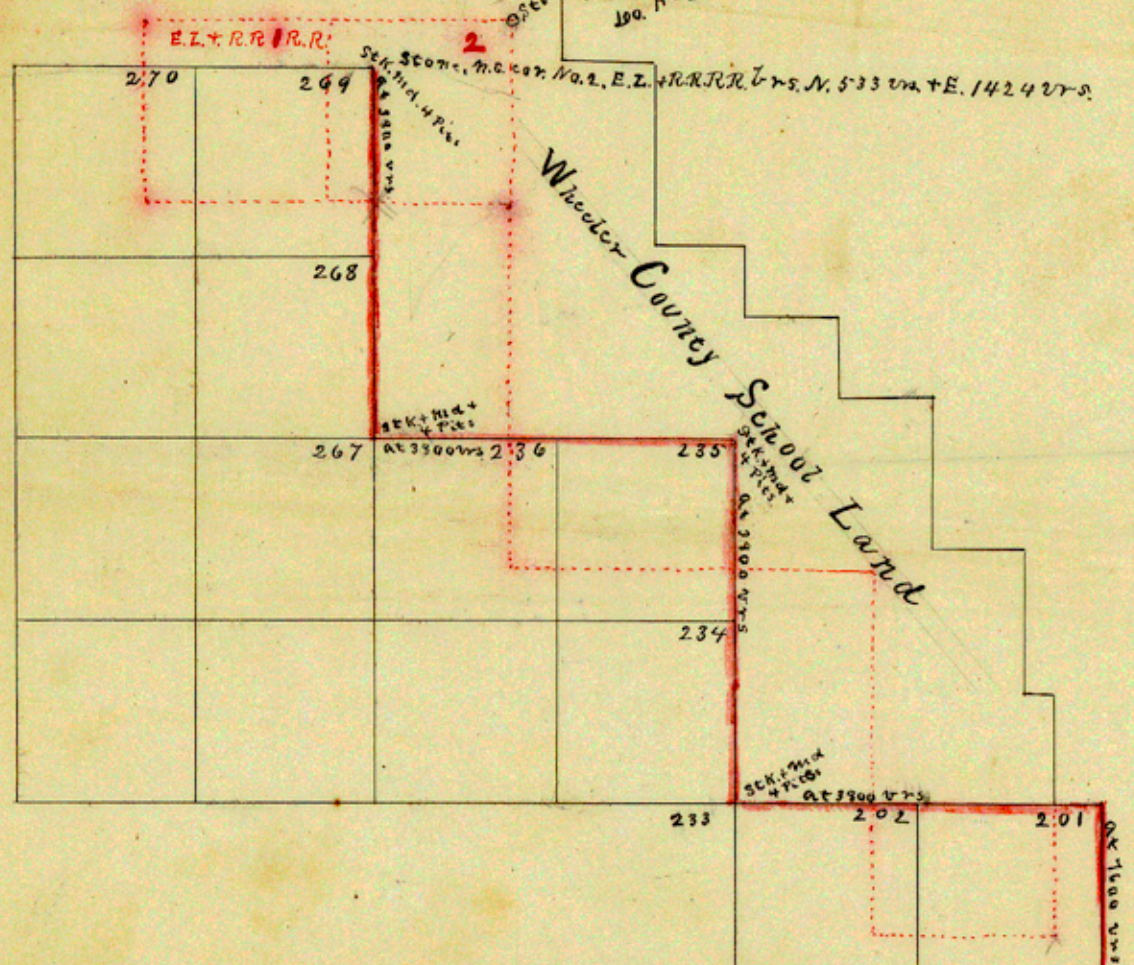
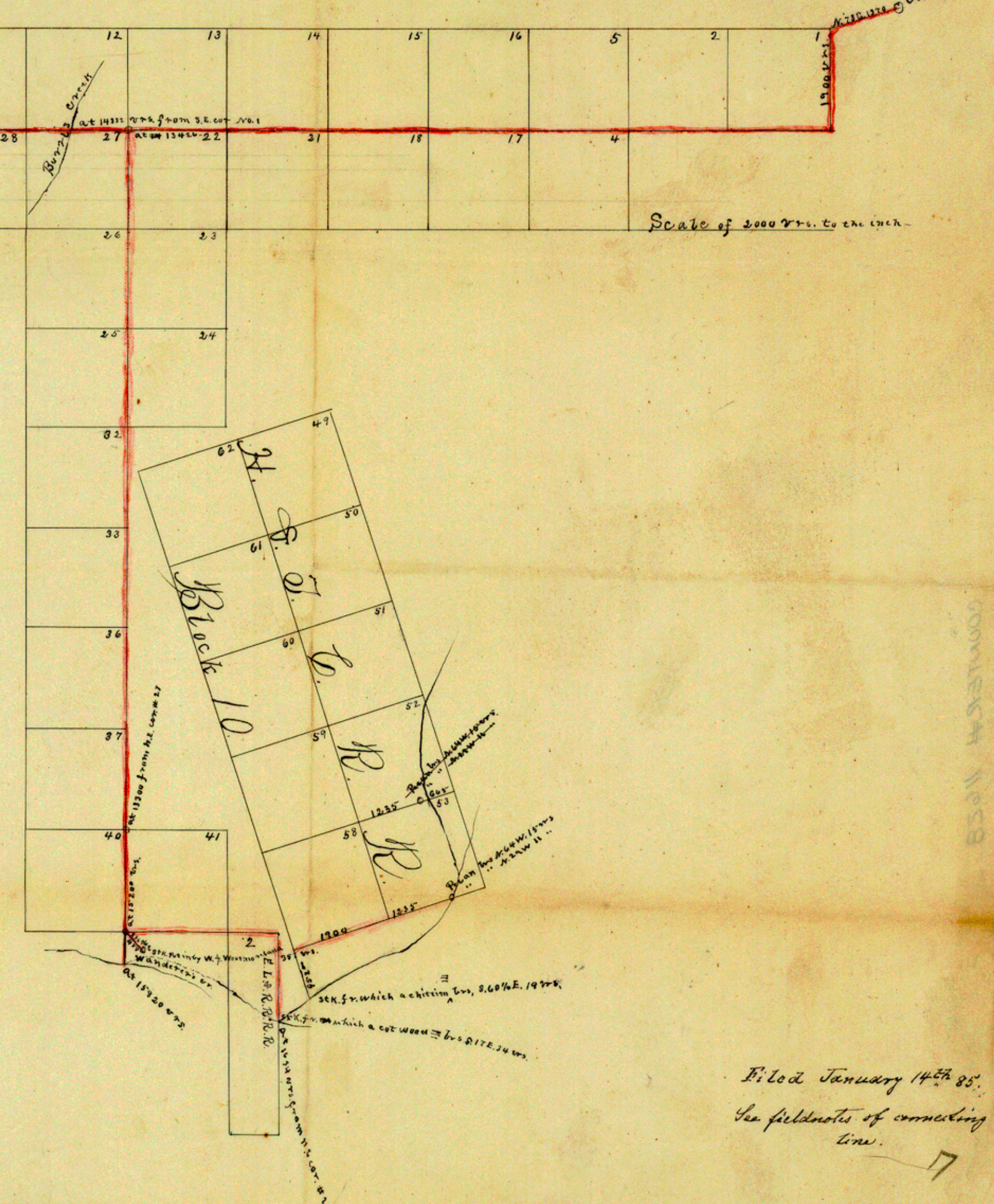


7<sup>th</sup> which enters Hb. 2<sup>nd</sup> at W. 3<sup>rd</sup> & S. 4<sup>th</sup> 100<sup>th</sup>  
 or former Hb. 2<sup>nd</sup> at W. 3<sup>rd</sup> & S. 4<sup>th</sup> 100<sup>th</sup>  
 100 Hb. 2<sup>nd</sup> at W. 3<sup>rd</sup> & S. 4<sup>th</sup> 100<sup>th</sup>



1881 April 17<sup>th</sup>  
 210  
 43912



Filed January 14<sup>th</sup> 85  
 See fieldnotes of connecting line.