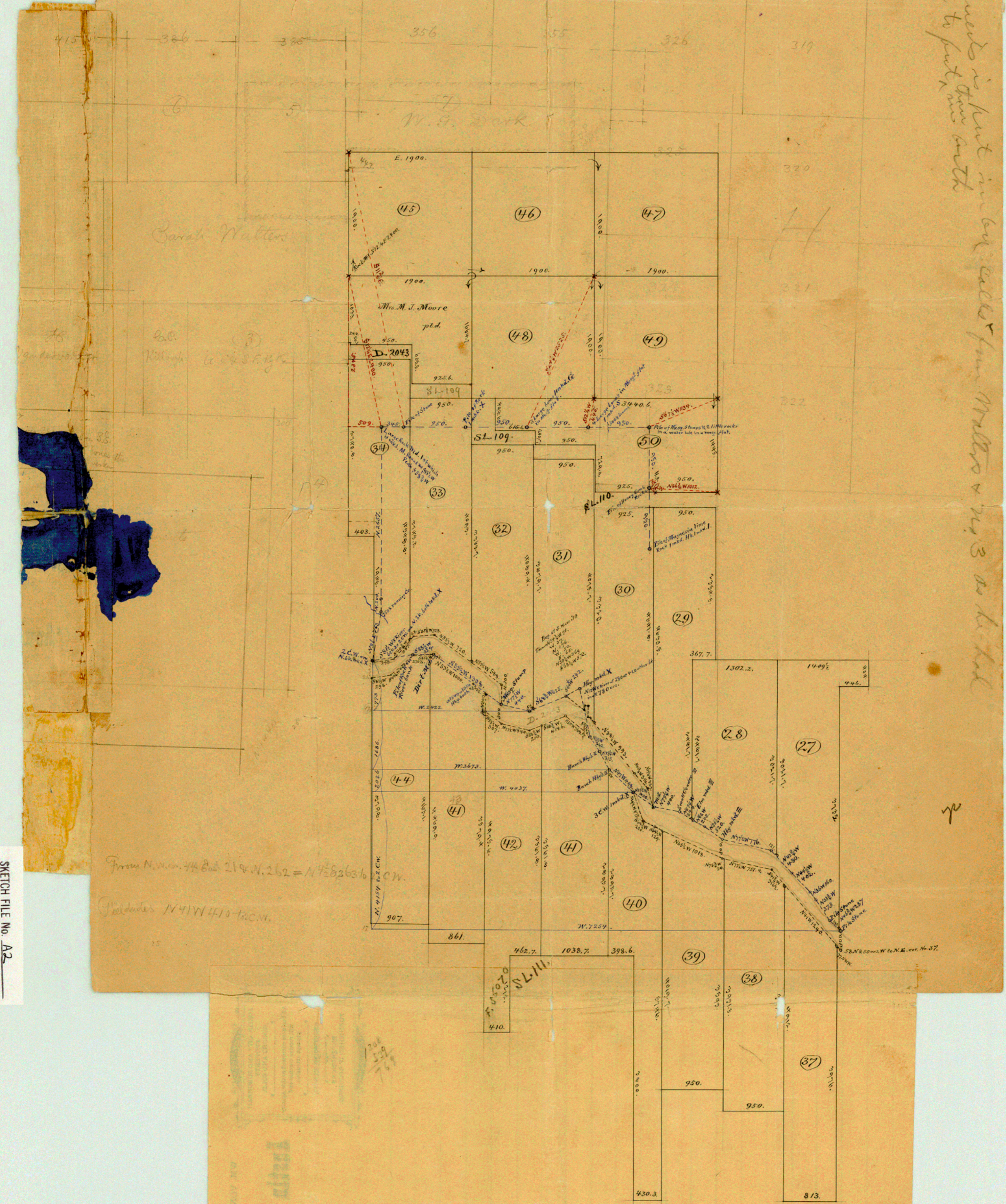


*piece of the Records is put in our case for Mrs. Moore & her 3 or her part
my letter sent to put mine with*



*From N. 44.8° E. 219 N. 262 = N 75.82636
Includes N 41° W 410 to C.M.*

SKETCH FILE NO. A2
COUNTY HARDYMAN

*See sketch
in Case S-20083
X S-20085-*

*Earliest poss rec
Copy so return the
Sketch to her*

*By Ernest R. Rowley
1893*

797
798
799
800
801
802
803
804
805
806
807
808
809
810
811
812
813
814
815

813
930
950
970
990-3
998-6
1058-7
1482-7
470
861
907
722 3/4
20
727 2/10
7238
17