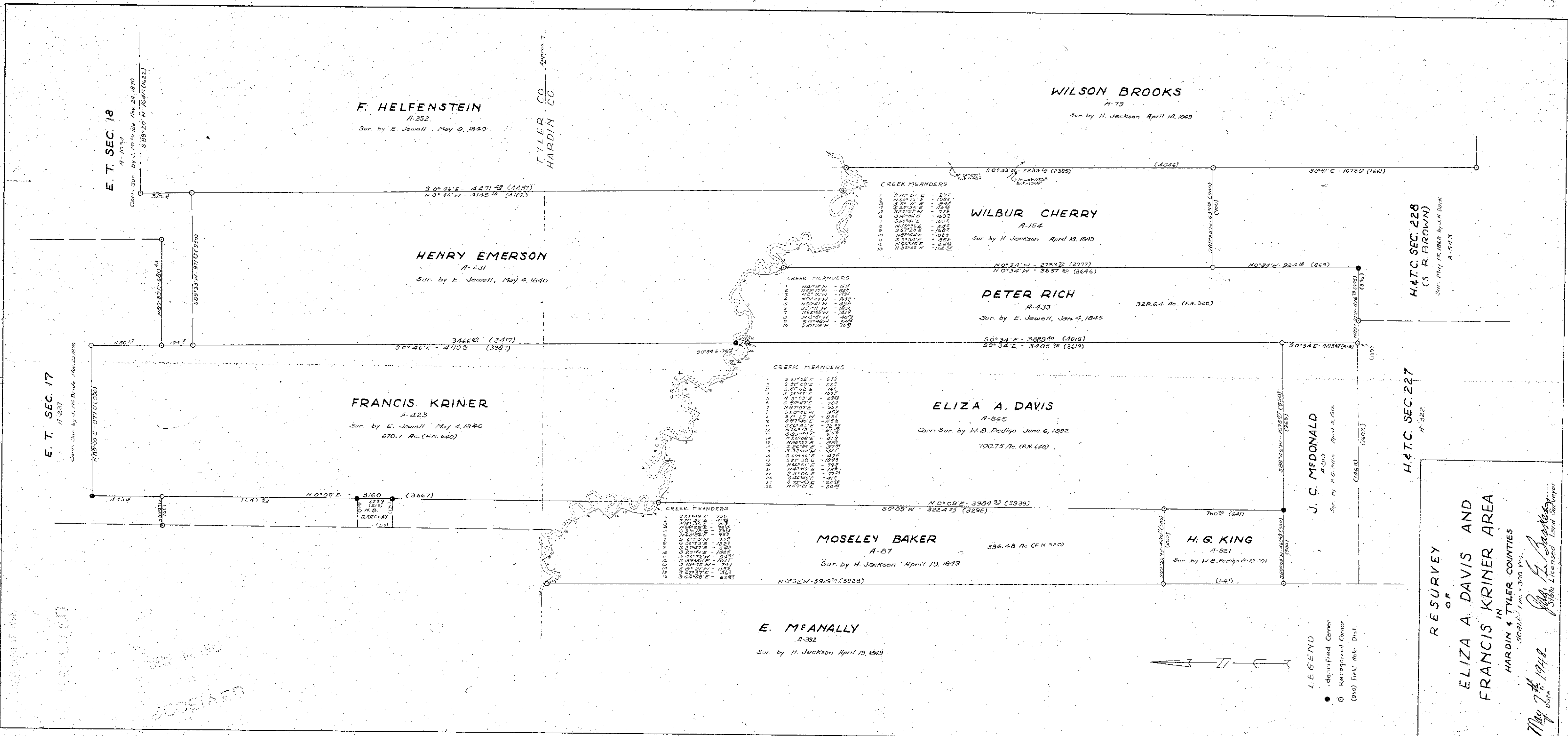


5-1219



E. T. SEC. 18
A-1037
Corr. Sur. by J. McBride Nov. 24, 1870
S 89° 25' N - 764.4 (1022)

E. T. SEC. 17
A-237
Corr. Sur. by J. McBride Nov. 24, 1870
N 15° 05' E - 877.9 (586)

F. HELFENSTEIN
A-352
Sur. by E. Jewell May 8, 1840

HENRY EMERSON
A-231
Sur. by E. Jewell, May 4, 1840

FRANCIS KRINER
A-123
Sur. by E. Jewell May 4, 1840
670.7 Ac. (A.N. 640)

ELIZA A. DAVIS
A-565
Corr. Sur. by W.B. Pedigo June 6, 1882
700.75 Ac. (A.N. 640)

MOSELEY BAKER
A-87
Sur. by H. Jackson April 13, 1849
336.48 Ac. (A.N. 320)

E. McANALLY
A-392
Sur. by H. Jackson April 13, 1849

WILSON BROOKS
A-79
Sur. by H. Jackson April 18, 1849

WILBUR CHERRY
A-154
Sur. by H. Jackson April 18, 1849

PETER RICH
A-433
Sur. by E. Jewell, Jan 4, 1845
328.64 Ac. (A.N. 320)

J. C. McDONALD
A-510
Sur. by P. G. Falls April 5, 1912

H. G. KING
A-521
Sur. by W. B. Pedigo 6-22-'01

H. & T. C. SEC. 228
(S. R. BROWN)
Sur. May 15, 1868 by J. H. Deak
A-543

H. & T. C. SEC. 227
A-322

CREEK MEANDERS

S 16° 01' E	277
N 50° 16' W	108
S 7° 17' W	248
S 82° 27' N	77
S 14° 01' E	160
S 60° 01' E	100
N 15° 36' E	247
S 67° 20' E	160
N 32° 04' E	102
S 67° 35' E	65
N 62° 35' E	65
N 52° 52' N	112

CREEK MEANDERS

N 41° 11' W	155
N 23° 17' W	281
N 87° 11' W	74
N 54° 27' W	97
N 5° 09' E	605
S 84° 47' E	70
N 67° 09' W	95
S 55° 02' W	105
S 87° 10' E	97
S 55° 42' E	72
N 64° 12' E	215
S 23° 47' E	67
N 82° 02' E	47
N 68° 15' E	65
S 24° 52' N	117
S 27° 06' E	27
S 21° 31' E	109
N 44° 11' E	79
N 42° 01' W	140
S 51° 06' E	77
S 44° 56' E	45
S 78° 45' E	45
N 77° 12' E	20

CREEK MEANDERS

S 20° 49' E	75
S 20° 52' E	178
N 64° 28' E	75
S 15° 32' E	95
S 21° 31' E	109
S 23° 47' E	67
S 27° 06' E	27
S 21° 31' E	109
N 44° 11' E	79
N 42° 01' W	140
S 51° 06' E	77
S 44° 56' E	45
S 78° 45' E	45
N 77° 12' E	20

LEGEND

- Identified Corner
- Reoccupied Corner
- (940) Field Note Dist.

RESURVEY
OF
ELIZA A. DAVIS AND
FRANCIS KRINER AREA
IN
HARDIN & TYLER COUNTIES
SCALE 1 in. = 300 Yrs.
May 7th 1948
date
J. H. Deak
State Licensed Land Surveyor