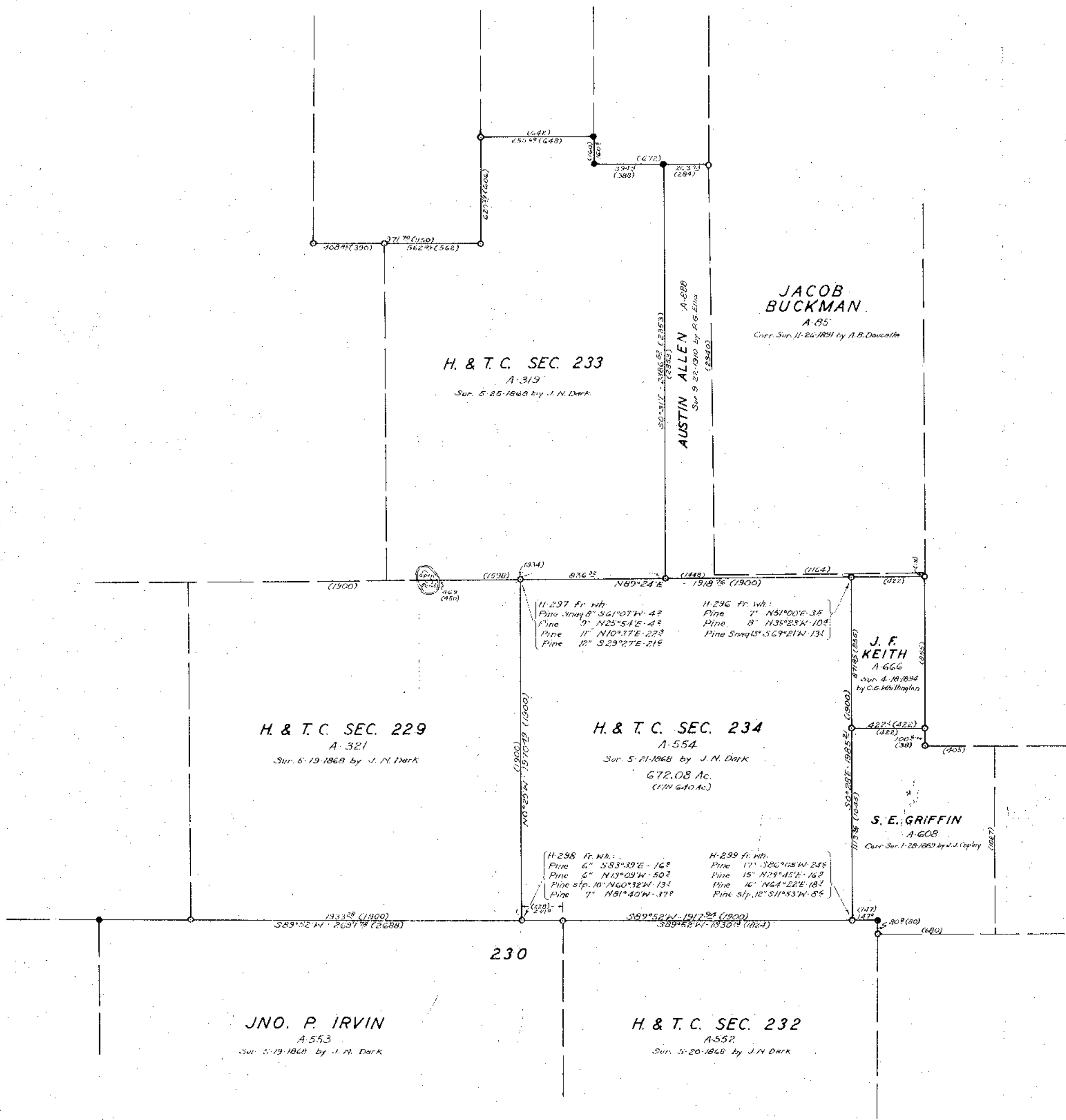


1541



- LEGEND -

- Identified Corner
- Recognized Corner
- (1000) Field Note Distance
- H-298... 4"x4" Concrete Mkr. No.



RESURVEY
OF
H. & T. C. SEC. 234 AREA
IN
HARDIN COUNTY
Scale 1 in. = 400 Yrs.

1/31/48
Dblc

John F. Parker
State Licensed Land Surveyor

D-961

D

R.P.H.