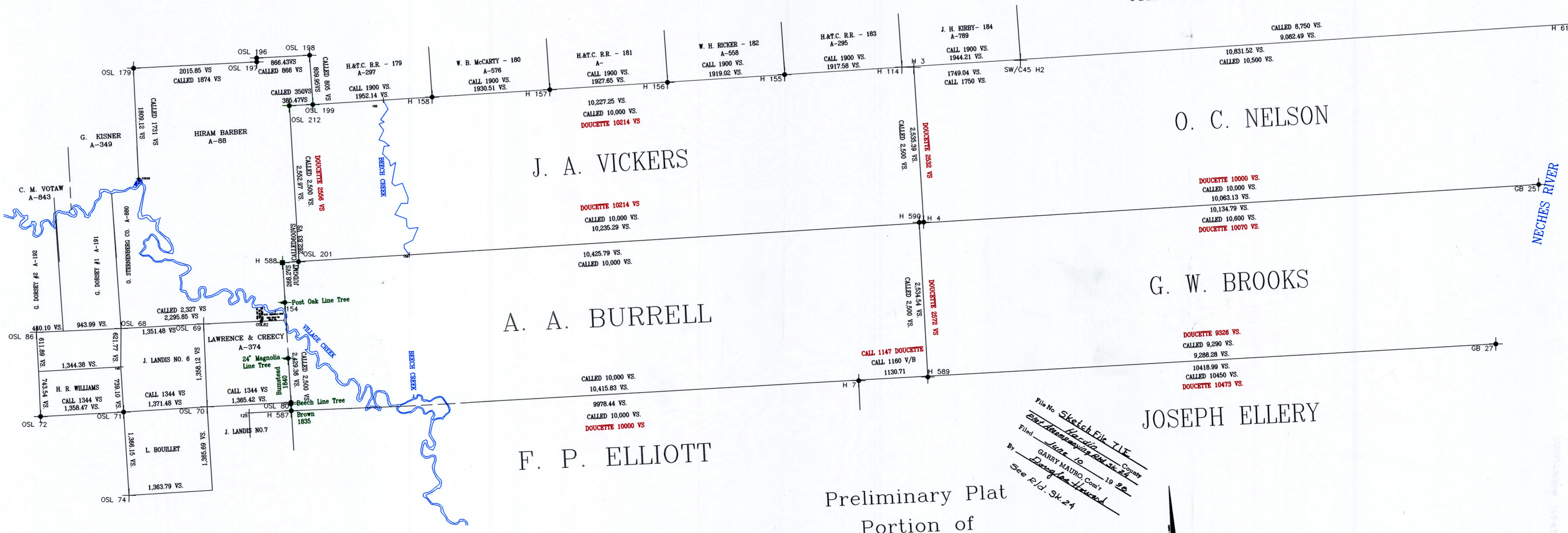


EXHIBIT 2

JAMES RAFFERTY



J. A. VICKERS

O. C. NELSON

A. A. BURRELL

G. W. BROOKS

F. P. ELLIOTT

JOSEPH ELLERY

Preliminary Plat
 Portion of
 HARDIN COUNTY, TEXAS
 Resurvey by D. D. Shine
 Licensed State Land Surveyor

File No. Sketch File 71E
 Filed 10/24/97 County HARDIN
 By GARRY MAURO, Com'r
 See R.L. Sk. 24



1" = 2000'

Scale 1:24,000
1" = 720 varas

NOTE: See accompanying report of 4/15/97

Legend:
 • Corners identified by record information
 • Corners and line trees identified in Sternberg v. Muldoon

4/15/97

N. Foster