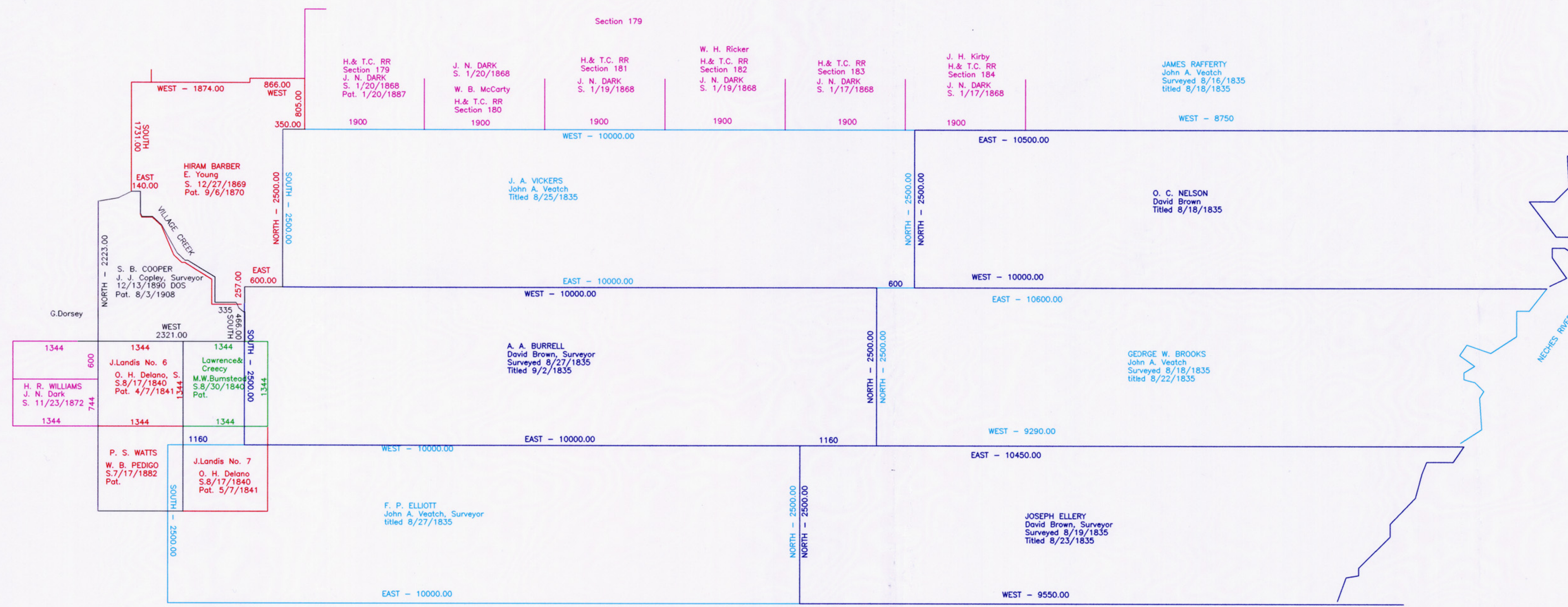


EXHIBIT I



WORKING SKETCH
 plotted from
 GLO FIELD NOTES
 Hardin County, Texas
 Scale = 1"=1000 Varas
 Prepared by Nedra Foster
 April 15, 1997

File No. Sketch File 71F
Hardin County
 Filed June 10 1998
 By GARRY MAURO Com'r
Dorsey
 See also sk. 24

SCALE: 1" = 1000 varas