

Buffalo Bayou

Brays Bayou

N70°W 7973

10 938

73938

J. R. Harris Title

Henry B. Prentiss

W. D. C. Harris Trol 38

Peter Mahen Walker 45

Sarah J. Williams Booker 1884

Jno T Swisher 100% A

Jno T Walker 45

Jno Rawdon Walker 45

Jno P Heyerland Walker 45

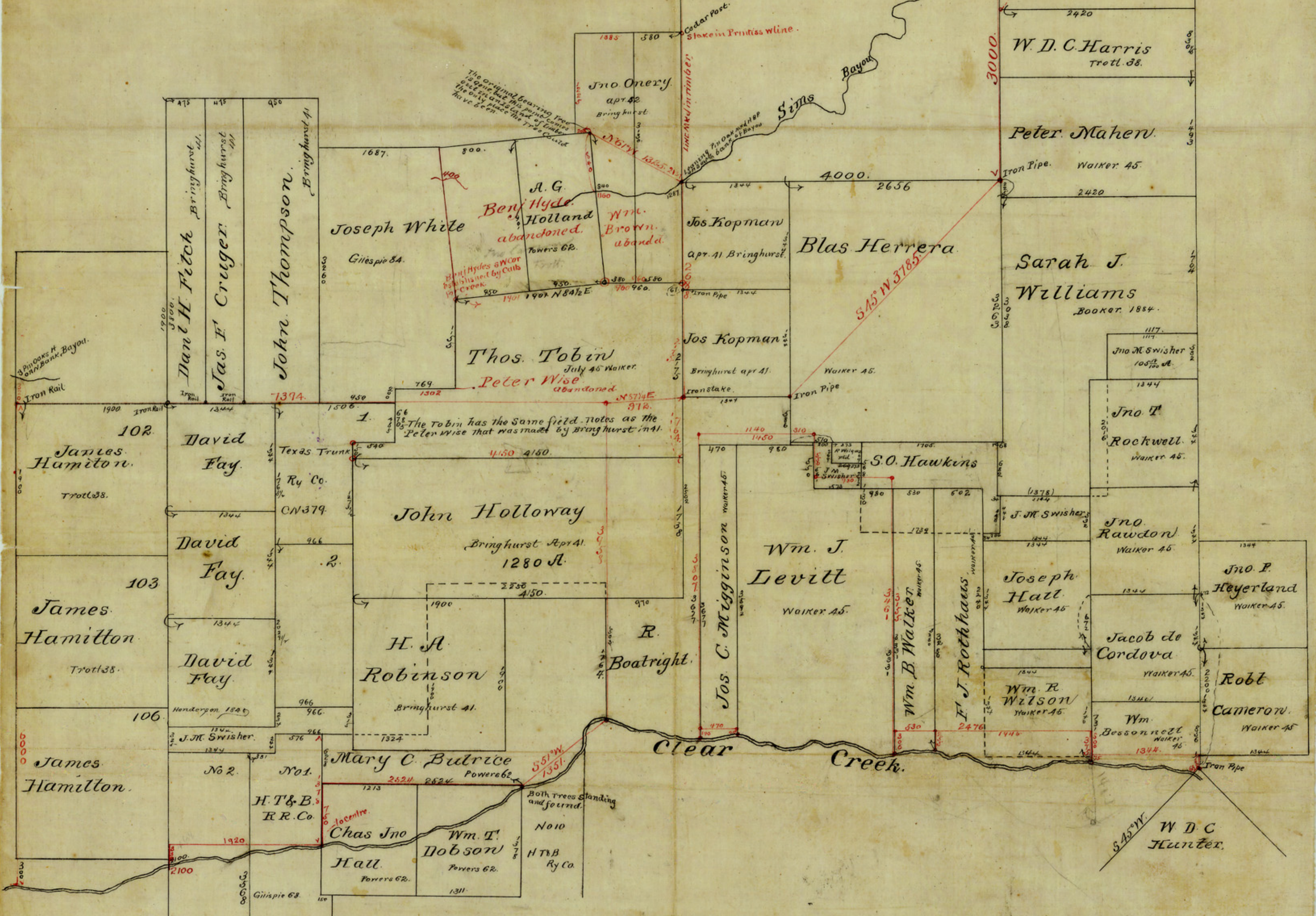
Jacob de Cordova Walker 45

Robt Cameron Walker 45

Wm Bossenwell Walker 45

W D C Hunter

Handwritten notes in red and purple ink, including names like 'James Hamilton' and 'David Fay'.



Sketch in Harris Co.

Scale: 1000 fms - 1 inch Var 8°47' E.

Note: - Red lines indicate Connections Actually run

I Jno W Maxey, Special Deputy Surveyor of Harris Co. do hereby certify that the above sketch truly and correctly shows the position of the Surveys represented thereon as found by an actual Survey on the Ground.

Jno W Maxey Special Dep. Sur. Harris Co.

I, J W Gillespie County Surveyor of Harris County do hereby certify that I have examined the foregoing sketch and find it correct.

J W Gillespie County Surveyor Harris Co Tex.

Explanation of Construction. The Benj Hyde & Wm Brown surveys (now abandoned) were made by Trol at the same time with Bringham's, who afterward became a deputy surveyor, as Chairman. The Jno Onery which now covers the Wm Brown's corner, which line of the H B Prentiss as called for. The Peter Wise now covered by the Thos Tobin, the Jno Holloway and the H. A. Robinson being made by Bringham at the same time must hold together and take their stand and connection from Benj Hyde's S W corner which is clearly established as shown on the sketch. None of these surveys ever reached the East line of the David Fay surveys, but stopped short as shown. The Fay surveys had no objects on their East line by which they could be identified. If the Tobin were held to Fay's East line it would lose about 1/2 of its area, and conflict with surveys made by the same surveyor at the same time. This shows that this was not the intention of the surveyor, but he called for Fay's line because he got set at position of Fay without identifying it on the ground.