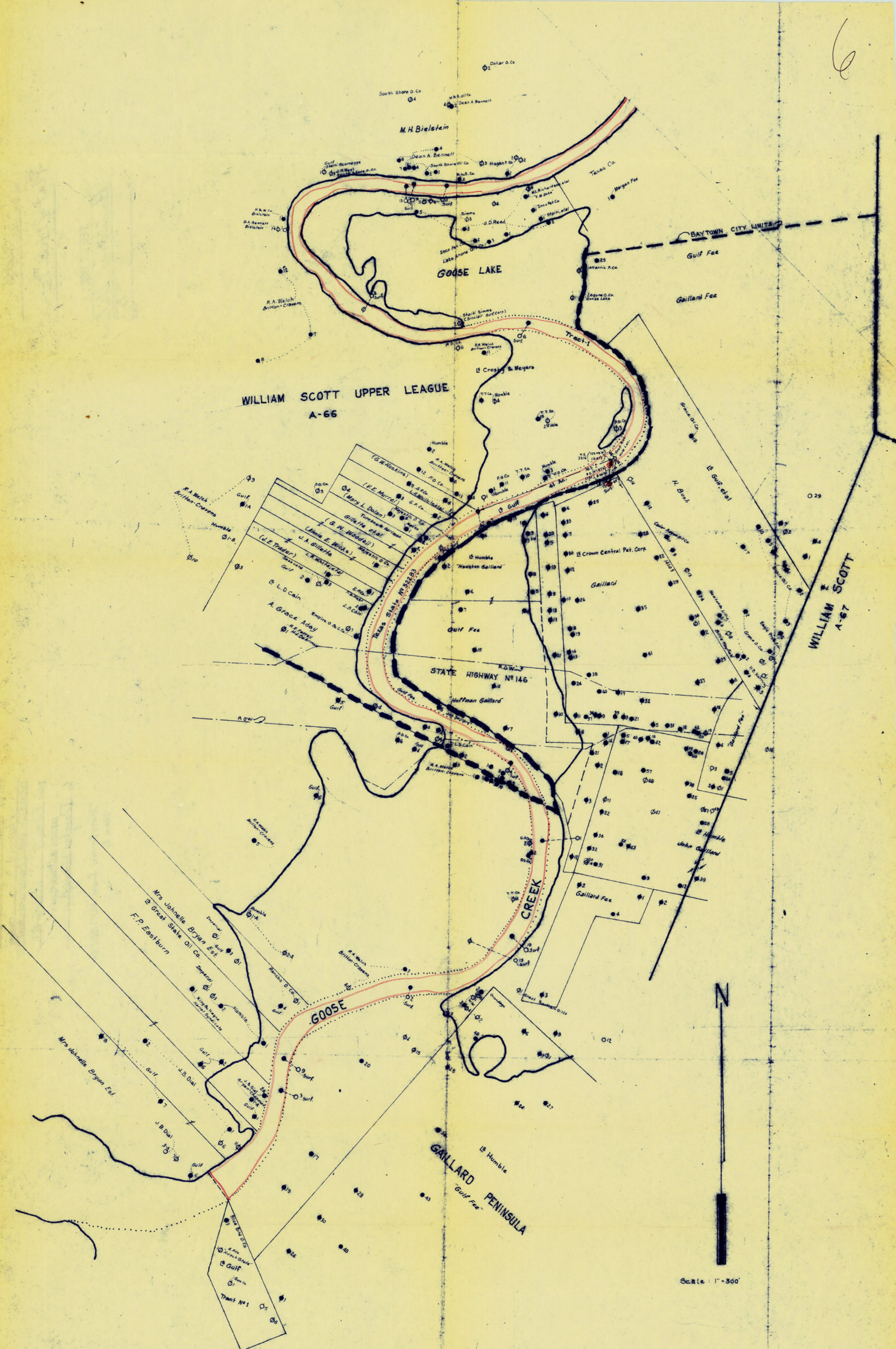


6



Gulf Oil Corporation - Gulf Production Division  
 Texas State Lease No. 32283, Tract #1-11 Acres  
 Wm. Scott Upper League, Ab. 66  
 Goose Creek Field, Harris County, Texas

Well #15 - (Corrected Location) 1450.5 feet Northwest along the Southwest line of the H. Bush 20 acre tract from the South or Southeast corner thereof and 60.0 feet Southwest at right angle to said line.  
 (Corrected Proposed Bottom Hole Location) 130.0 feet North 7°48' East of the Surface Location; being 38.0 feet Southeast of the West line of lease (same being the West bank of Goose Creek) and 36.0 feet Northwest of the East line of lease (same being the East bank of Goose Creek); being 765.0 feet Northeast of the Producing Department location of well #7  
 (Producing Depth Location) 107.87 feet North and 8.04 feet East from the Surface Location.

THE STATE OF TEXAS  
 COUNTY OF HARRIS

I hereby certify that this plat, which is drawn to the scale shown thereon, accurately shows to scale the lease of Gulf Oil Corporation with all wells thereon in accordance with a survey made on the ground, and shows all adjacent properties and wells as reflected by the records of the Railroad Commission of Texas; and that this plat correctly reflects all pertinent and required data.

*Geo. H. Lucy*  
 GEO. H. LUCY, Registered Professional Engineer

SUBSCRIBED AND SWORN TO before me this the 22nd day of February, 1952.

*Delores E. Davis*  
 DELORES E. DAVIS  
 Notary Public, Harris County, Texas.