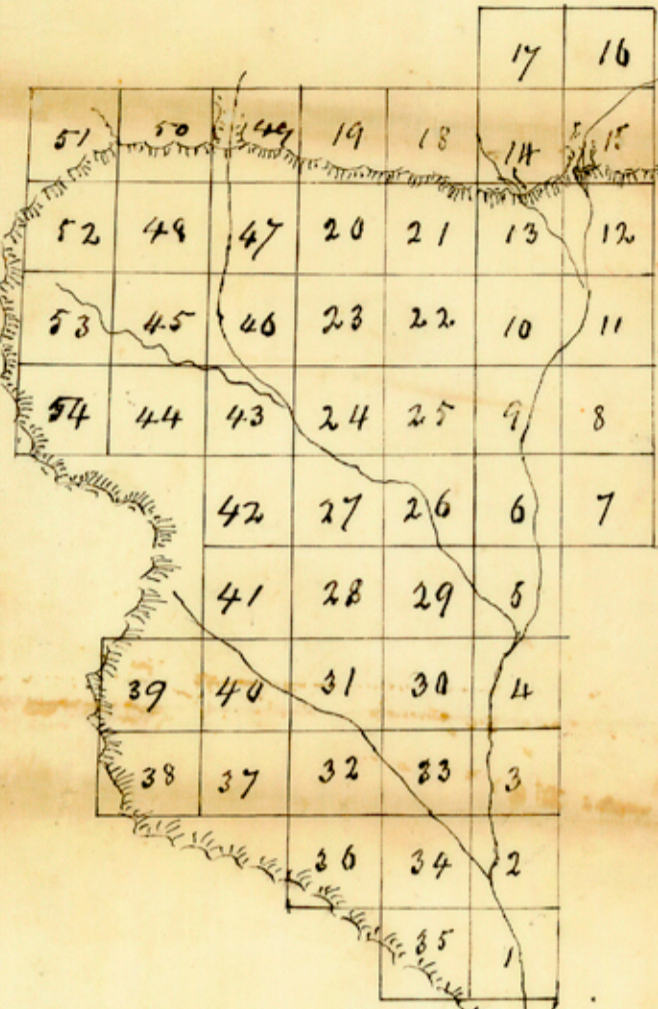
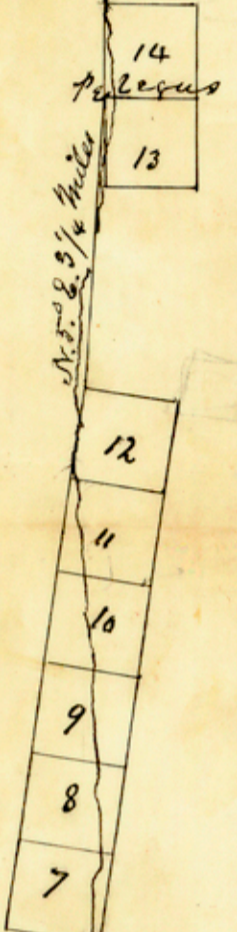


Division $11^{\circ} 30'$ - East

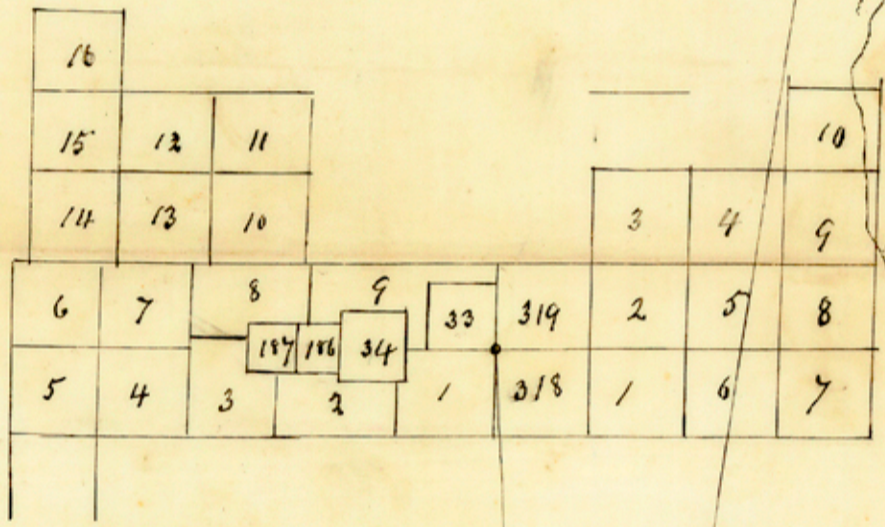


Block No 6.
H. & J. C. R. & Co.



Lavo Ranch

Block No 7
H. & J. C. R. & Co.



Block No 8.
H. & J. C. R. & Co.

San Juan

N. 27.6.9.7.4. N.

San Juan

Alamo
Espino
Canoja
Hernandez

S. 54. E 12 1/2 miles
San Juan + Quetzal All West

Pilolo Creek

N. 10° 8' about 23 miles

N. 10 W. 80 3/8 0.250

Rio Grande

Mexico