

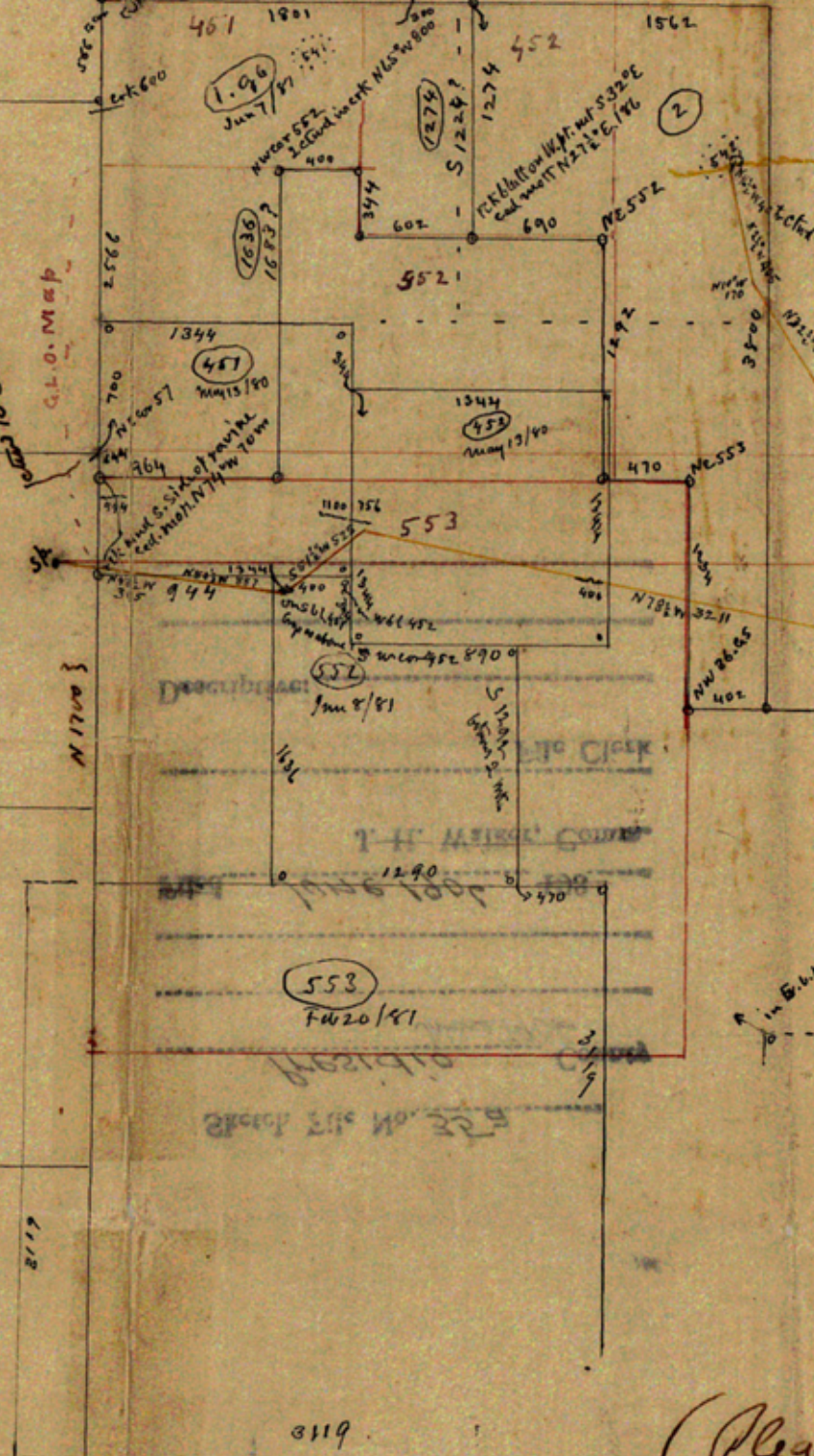
67

66

57

56

M.A. in bed frame in E. line B 14
 467 1801
 1.96 Jun 7/91
 467 1801
 1.96 Jun 7/91
 467 1801
 1.96 Jun 7/91

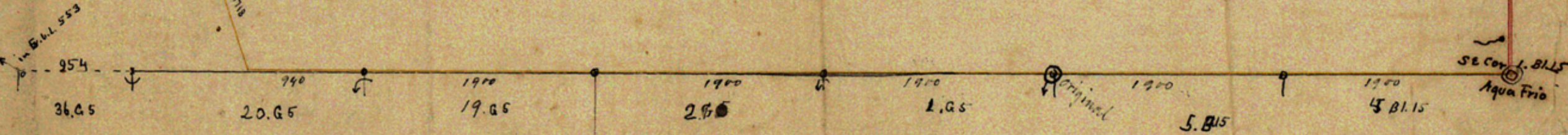


(Gano) from by cur/R.G.G. to SE cor 1.13.15 East 15315. South 3800

T.C. 541
 By N.W. 451 dist 14 E. abt 300
 N 1300 0 at top of west 1900 5 con.
 E 1900 S. 1500 1900 0. W. 1900
 S 42 10 by SE 548 N.E.S.W. 1900
 Mar 11. 1881

NE S 7 in BIK 14 (Reavis) to SE 1 in BIK 15 East 15941 vrs south 3113 vrs

(Dod) Spring Alamo Casario to SE cor 1.15 East 16185 S. 2503



Line run from A.R.G. to A.C. sp.

R.H. Dod
 Surv. June 11-12-13-14 1906

(Please return to Redwood
 alpine Res)