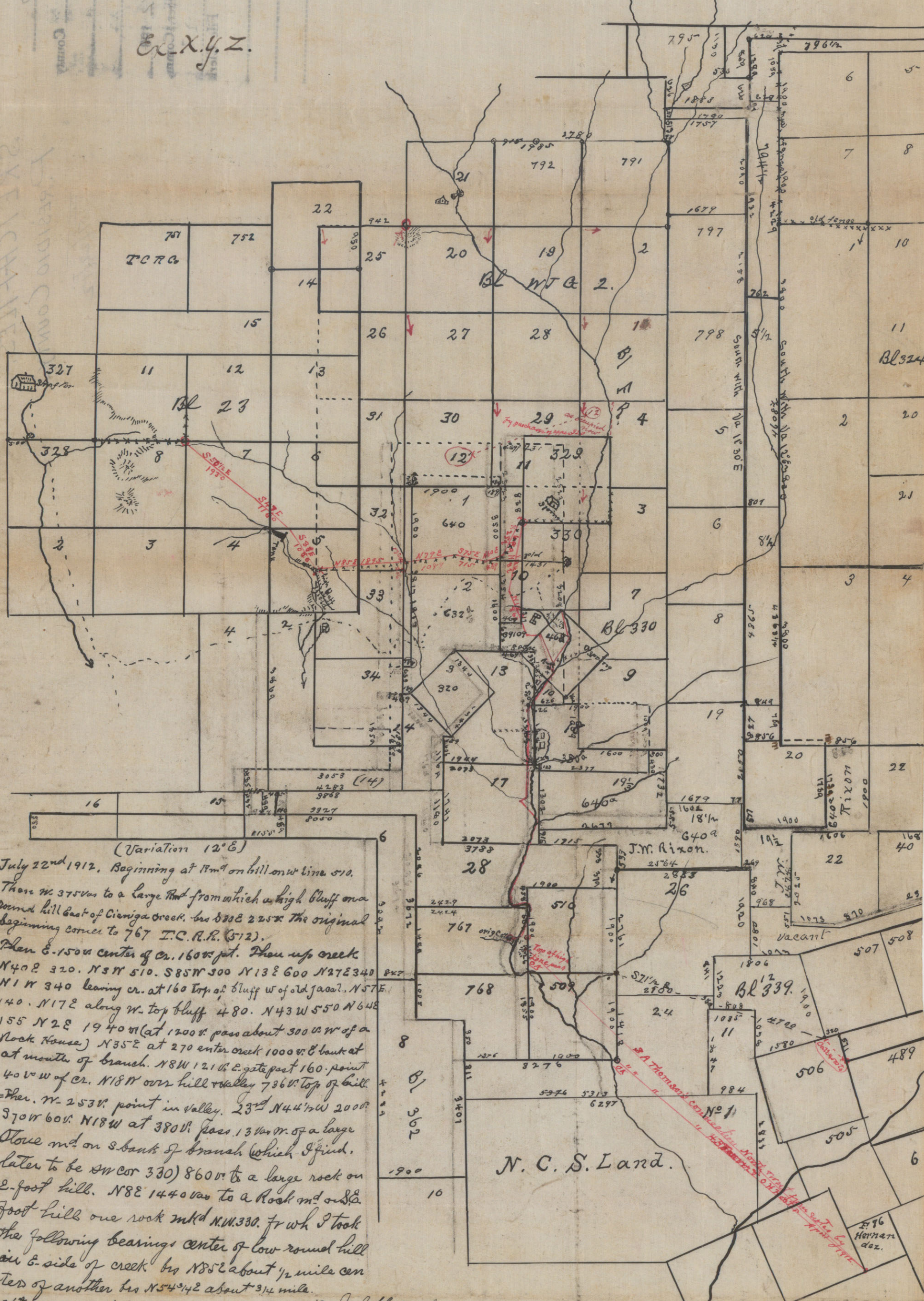


Ex. X. Y. Z.



(Variation 12° E)

July 22nd 1912. Beginning at Pt. A on hill on W line 510. Then N 37° 50' to a large rock from which a high bluff on a round hill east of Cienega Creek. by S 85 E 225'. The original beginning comes to 767 I.C.R.R. (512). Then E. 150' center of cr. 1600' pt. Then up creek N 40 E 320. N 37 W 510. S 85 W 300 N 13 E 600 N 27 E 340 N 1 W 340 leaving cr. at 160' top of bluff W of old Jacob. N 57 E 140. N 17 E along W. top bluff 480. N 43 W 550 N 64 E 155 N 2 E 1940' (at 1200' pass about 300' W of a Rock House) N 35 E at 270 enter creek 1000'. E bank at mouth of branch. N 8 W 121 W E gate post 160' point 40' W of cr. N 18 W over hill valley 736' top of hill. Then N 253' point in valley. 23rd N 44' W 2000'. 370' W 60'. N 18 W at 380'. pass 13' W of a large stone mt. on S bank of branch (which I find later to be SW cor 330) 860'. to a large rock on E-foot hill. N 8 E 1440' to a rock mt. on E-foot hill one rock mtd N.W. 330. fr wh I took the following bearings center of low round hill on E. side of creek by N 85 E about 1/2 mile center of another by N 54° 42' about 3/4 mile. after noon went to a fence corner on top of E. high bluff of a cañon in center of survey No 5 Bl 23. Then ran along a fence to NW cor 330, as follows. N 85 E 1895'. N 79 E 1088'. fence corner fr wh the monument on San Jacinto mtn by S 79 E 2. S 75 E 715'. N 60 E 469'. N 25 E 689' + 42-10' to about N.W. cor 330 again. 24th went to SE cor 11 + NE cor 8 Bl 23. a rock mt around a fence corner post same having been proven by careful run East from NE cor 328 SE of Shafter. Then S 50' W 21930'. top of ridge. S 47 E 1160'. point on ridge at head of pass and about 200' E of cement down. " S 36 E 1050'. to about fence corner on E. bluff. which I find stands East 1040' and South 1820' from the N.W. corner. 33 Bl W.T.C. 2. I find by Latitude & departure. that a run N. from 767. that the N.W. corner of 330 stands N-894' 1000' and W-1530' and from N.E. cor 8 Bl 23. the N.W. cor 330 stands East 7310' and South 1820'. see sketch herewith. The lines run are indicated by red lines. The fence lines thus xxx. you will note by referring to sketch above that 10. 11. 12. 13. 14. 17. 18 and 28 were evidently made to connect from 767 to purchase no 39109, which stands 4690' due west of the W cor of 468. Humphill. Surveyed July 22nd 23rd 24th 1912.

See Sketch and Con. lines by R.S. Doer, Filed G.L.O. 1-9-12, Presidio Co S.K. Files.

W.B. Heator } Chain
Gonzales Rivera } Carriers.

I hereby certify that above notes are a true and correct copy and that the accompanying sketch is a true representation of the survey as they are on the ground and described and set forth in these field notes and that the connections were actually run on the ground and with the above chain carriers.

Henry W. Brown,
County Surveyor Presidio Co. Texas

N.B. Note Connection Given in original f n of 767, he left out his 2nd run down creek from North cor 468 S 33° W 660' then above see my run N 3° W 510 (call 450). S 85 W 300 (call 380) N 27 E 340 (call 380) the creek bluff being high perpendicular, so he could not have made the runs as he gave them. up channel of creek is smooth where he stayed in it. his last call S 40 W 490. should have been S 40 W 690 & N 12 W 190.

N.B. note connection line is original of 1767. he left out his 2nd run down creek from at cor 468. S 33° W 660 W. Then above see my run N 3° W 510 (call 450) S 85° W 300 call 380 N 27° E 340 (call 380 N 14° W 340 call 240 N 2° E 1940 call 1740. The creek bluff being high perpendicular, so he could not have made the run as he gave them. A channel of creek is smooth where he stayed in it. his last call S 40° W 490 should have been S 40° W 690 + N 12° W 190.

330 state, sold by state is partly covered by 3.7 + 11 patented.

- 12 Bl 330. conflicts with 30. 31 32 33 + 34. W.T.C. 2.
- 14 " " " " 34. 2 + H
- 28 " " " " 34. 2 + H
- 6 " 362 " " 4 + 15
- 10 " 330 " " 4 + 15
- 18 " " " " 330 + 468
- 17 " " " " 29 + 329.

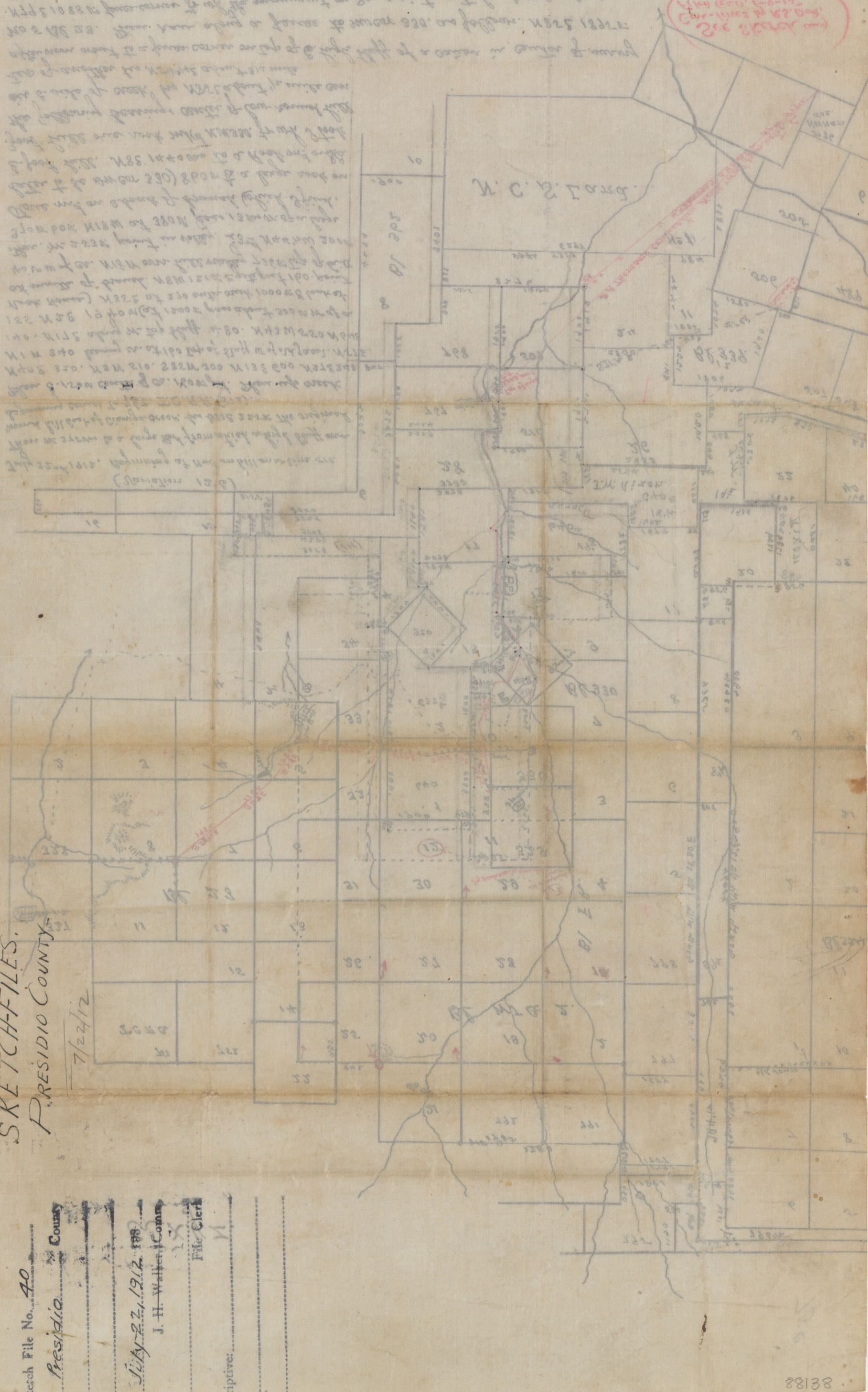
and covers NW 1/4 of 330.

H. W. B.
C. S. P. Co. Det

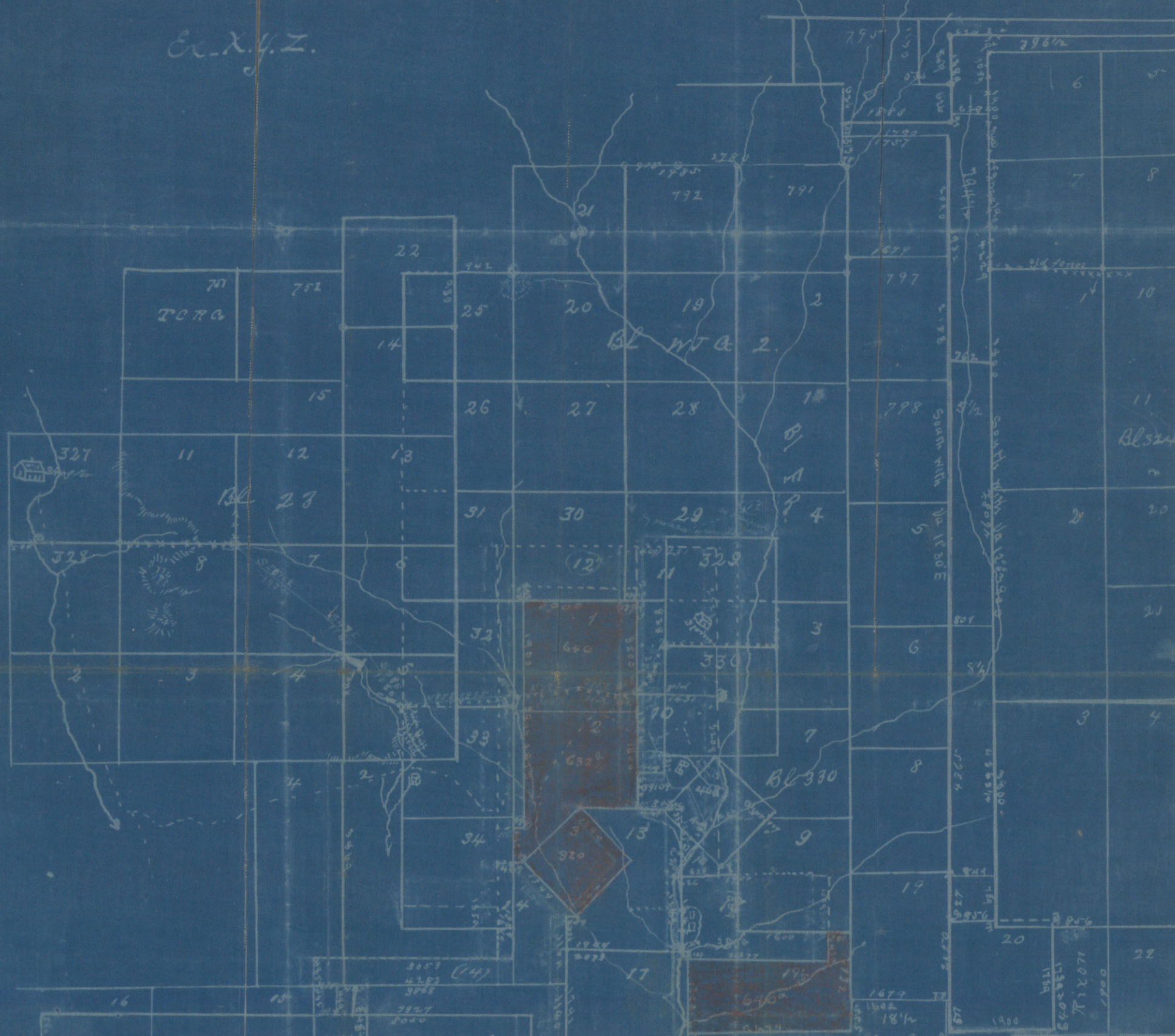
SKETCHFILES.
 PRESIDIO COUNTY.

7/22/12

Sketch File No. 40
 County Presidio
 Date July 22, 1912
 J. H. Walker, County Clerk
 F. M. Clerk



Ex. N. Y. Z.



(Variation 12° E)

July 22nd 1912, Beginning at 17m on hill on W line 510
 Then W 375m to a large flat from which a high bluff and
 some hill East of Cimiga creek by 320 225. The original
 bearing from 17m to 320 is N 13 E 600.

Then S 150m center of cr. 1600 ft. Then up creek
 N 40 E 320. N 51 W 510. S 85 W 500 N 13 E 600 N 27 E 340
 N 1 W 340 leaving cr. at 160 top of bluff W of old jail. N 75 E
 140. N 17 E along W top bluff 480. N 43 W 550 N 64 E
 155 N 2 E 1940 ft (at 1200 ft pass about 300 ft W of a
 Rock House) N 35 E at 270 enter creek 1000 ft. E bank at
 at mouth of branch. N 8 W 121 ft. E gate post 160 point
 40 ft W of cr. N 18 W over hill valley 736 ft top of hill
 Then W 253 ft point in valley. 23 ft N 44 W 200 ft
 370 ft 60 ft N 18 W at 380 ft pass 13 ft W of a large
 stone mt. on bank of branch which I find
 later to be SW cor 330) 860 ft to a large rock on
 E-foot hill. N 8 E 1440 ft to a rock mt. on E
 foot hill one rock mt. N. W. 330. for which I took
 the following bearings center of low round hill
 on E side of creek by N 85 E about 1/2 mile cen
 ter of another by N 54 W 2 about 3/4 mile

afternoon went to a fence corner on top of E high bluff of a cañon in center of survey
 No 5 Bl 23. Then ran along a fence to NW cor 330, as follows. N 85 E 1895 ft.
 N 79 E 1088 ft fence corner for which the monument on San Jacinto sits by 879 ft. 875 E 715 ft
 N 60 E 469 ft. N 25 E 689 ft + 6-10 ft to above N. W. cor 330 again 24 ft. went to SE cor 11 & NE cor 8 Bl 23. a rock mt
 around a fence corner post same having been proven by careful run East from NE cor 328 SE of Chapter
 then S 50 W 2 1930 ft top of ridge. S 47 E 1160 ft point on ridge at head of pass and about 200 ft East of cement down
 " 336 E 1050 ft to above fence corner on E bluff, which I find stands East 1040 ft and South 1810 ft from the
 N. W. corner 33 Bl W & 2.

I find by latitude & departure, that a run N from 767 that the N. W. corner of 330 stands N 89 41 000 and W.
 153 ft and from N. E. cor 8 Bl 23. The N. W. cor 330 stands East 7310 ft and South 1820 ft.
 see sketch herewith. The lines run are indicated by red lines. The fence lines thus xxx.
 you will note by referring to sketch above that 10. 11. 12. 13. 14. 17. 18 and 28 were evidently made
 to connect from 767 to purchase no 39109, which stands 4690 ft due west of the W cor of 468 Hemphill.

Surveyed July 22nd 23rd & 24th 1912.

M. B. Heator } Chain
 Gonzales Rivera } Chain
 I hereby certify that above notes are a true and correct copy and that
 the accompanying sketch is a true representation of the survey as they are on
 the ground and described and set forth in their field notes and that the con
 nection were actually run in the ground and with the above chain carriers.

Henry W. Devol
 County Surveyor Pecos Co. Texas

15 ft 330 center of cr. 1600 ft. Then up creek
 N 40 E 320. N 51 W 510. S 85 W 500 N 13 E 600 N 27 E 340
 N 1 W 340 leaving cr. at 160 top of bluff W of old jail. N 75 E
 140. N 17 E along W top bluff 480. N 43 W 550 N 64 E
 155 N 2 E 1940 ft (at 1200 ft pass about 300 ft W of a
 Rock House) N 35 E at 270 enter creek 1000 ft. E bank at
 at mouth of branch. N 8 W 121 ft. E gate post 160 point
 40 ft W of cr. N 18 W over hill valley 736 ft top of hill
 Then W 253 ft point in valley. 23 ft N 44 W 200 ft
 370 ft 60 ft N 18 W at 380 ft pass 13 ft W of a large
 stone mt. on bank of branch which I find
 later to be SW cor 330) 860 ft to a large rock on
 E-foot hill. N 8 E 1440 ft to a rock mt. on E
 foot hill one rock mt. N. W. 330. for which I took
 the following bearings center of low round hill
 on E side of creek by N 85 E about 1/2 mile cen
 ter of another by N 54 W 2 about 3/4 mile

Copy of
Sketch File No. 40

Presidio County

Copy of tracing showing

Survey date July 27, 1912

Filed 193

J. H. Walker, Comm.

File Clerk

Descriptive: