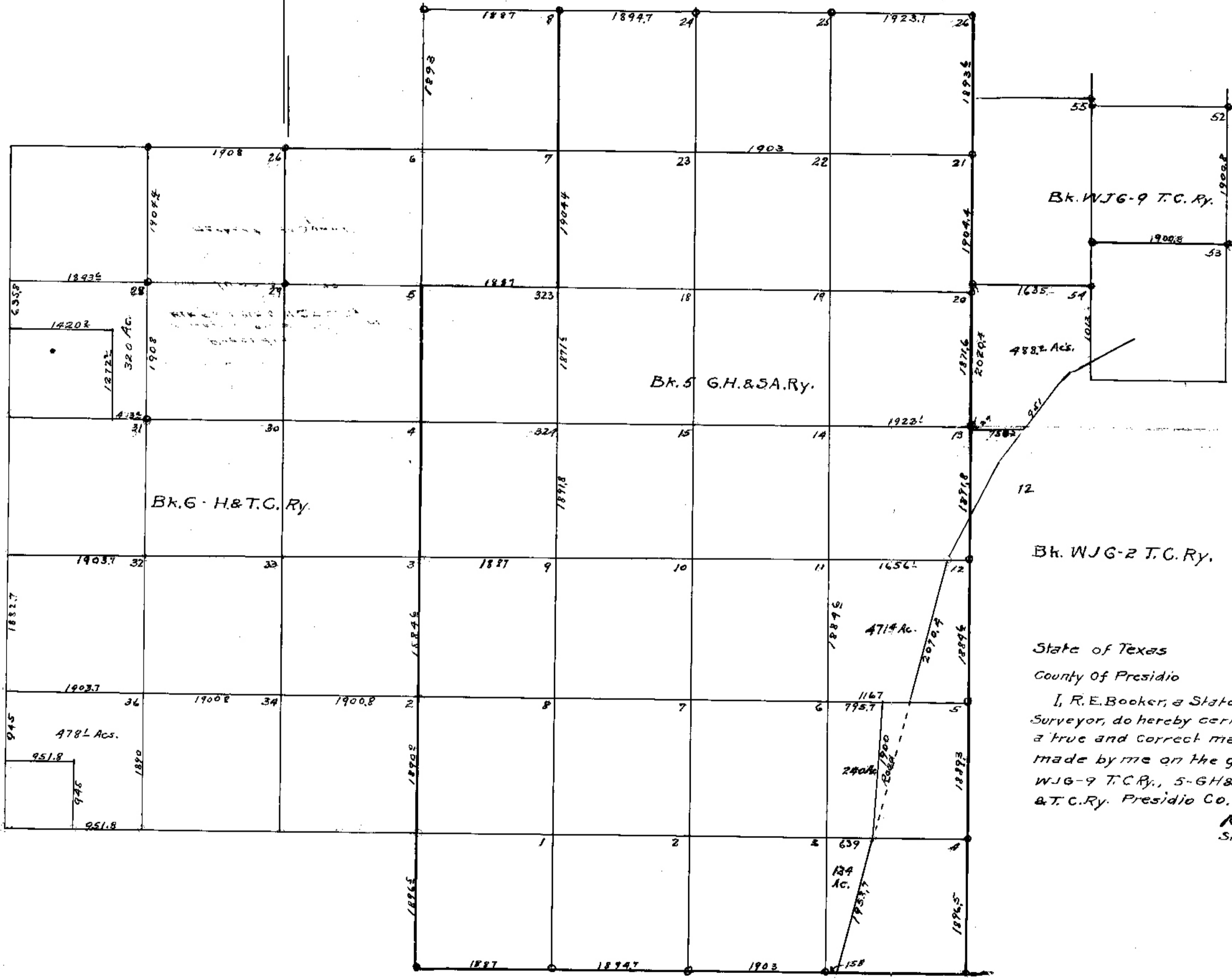


PLAT

Showing Land Surveyed for Bunton Bro's.  
In Bk. WJG-9 T.C. Ry., Bk. 5 G.H. & S.A. Ry.  
and Bk. 6 H. & T.C. Ry. Presidio County.  
Scale 1" = 1000 Vs. May 1939



State of Texas  
County of Presidio

I, R. E. Booker, a State Licensed Land  
Surveyor, do hereby certify that this is  
a true and correct map of a survey  
made by me on the ground in blocks  
WJG-9 T.C. Ry., 5-GH & S.A. Ry and 6-H.  
& T.C. Ry. Presidio Co. Tex.

*R. E. Booker*  
State Licensed Surveyor