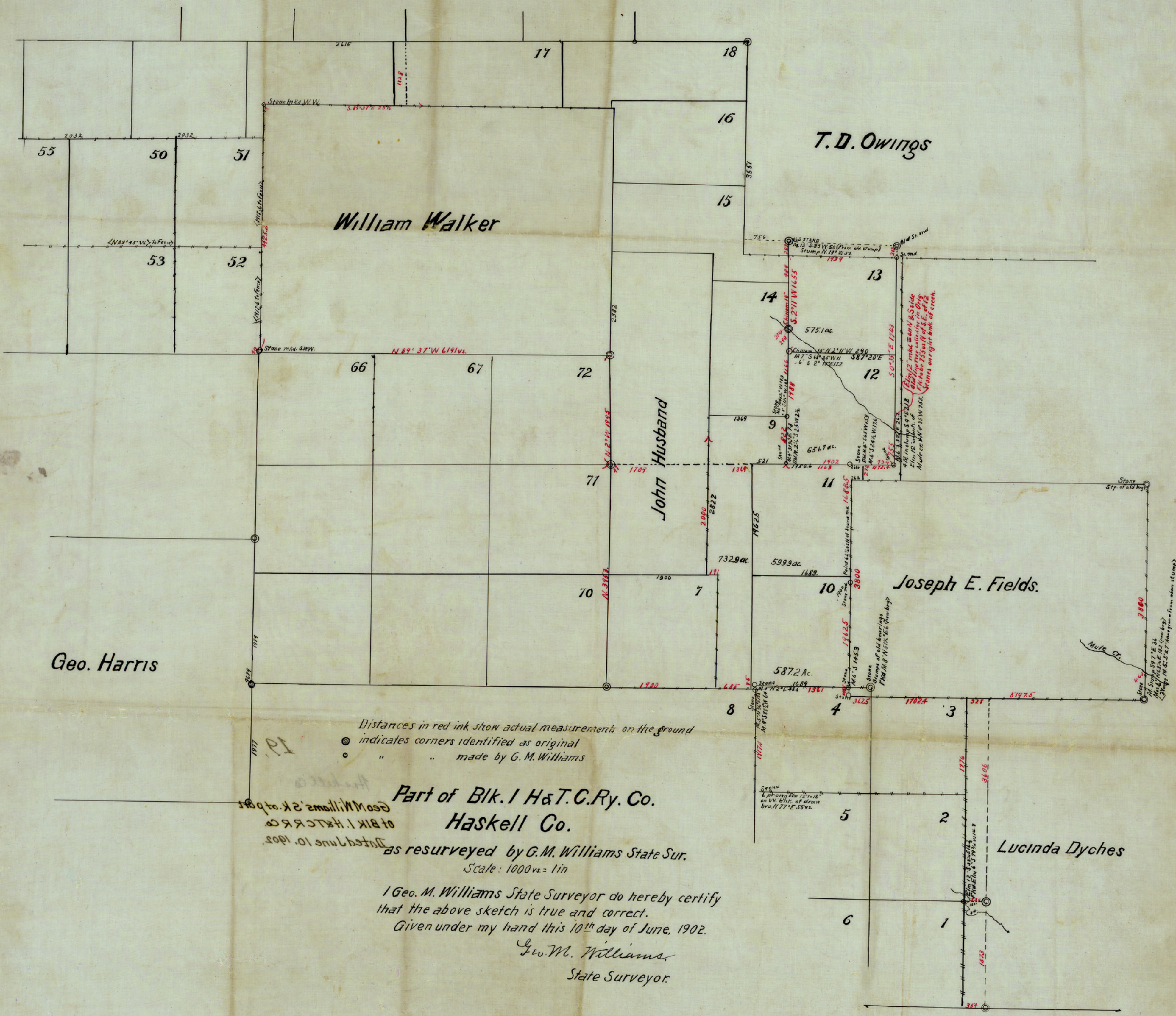


Haskell Co.
Sketches
G. M. Williams
State Sur.



Distances in red ink show actual measurements on the ground
 ● indicates corners identified as original
 ○ " " " made by G. M. Williams

Part of Blk. 1 H & T. C. Ry. Co.
Haskell Co.
 as resurveyed by G. M. Williams State Sur.
 Scale: 1000 ft = 1 in

I Geo. M. Williams State Surveyor do hereby certify
 that the above sketch is true and correct.
 Given under my hand this 10th day of June, 1902.
 Geo. M. Williams
 State Surveyor.

COUNTY # 1902

Geo. M. Williams