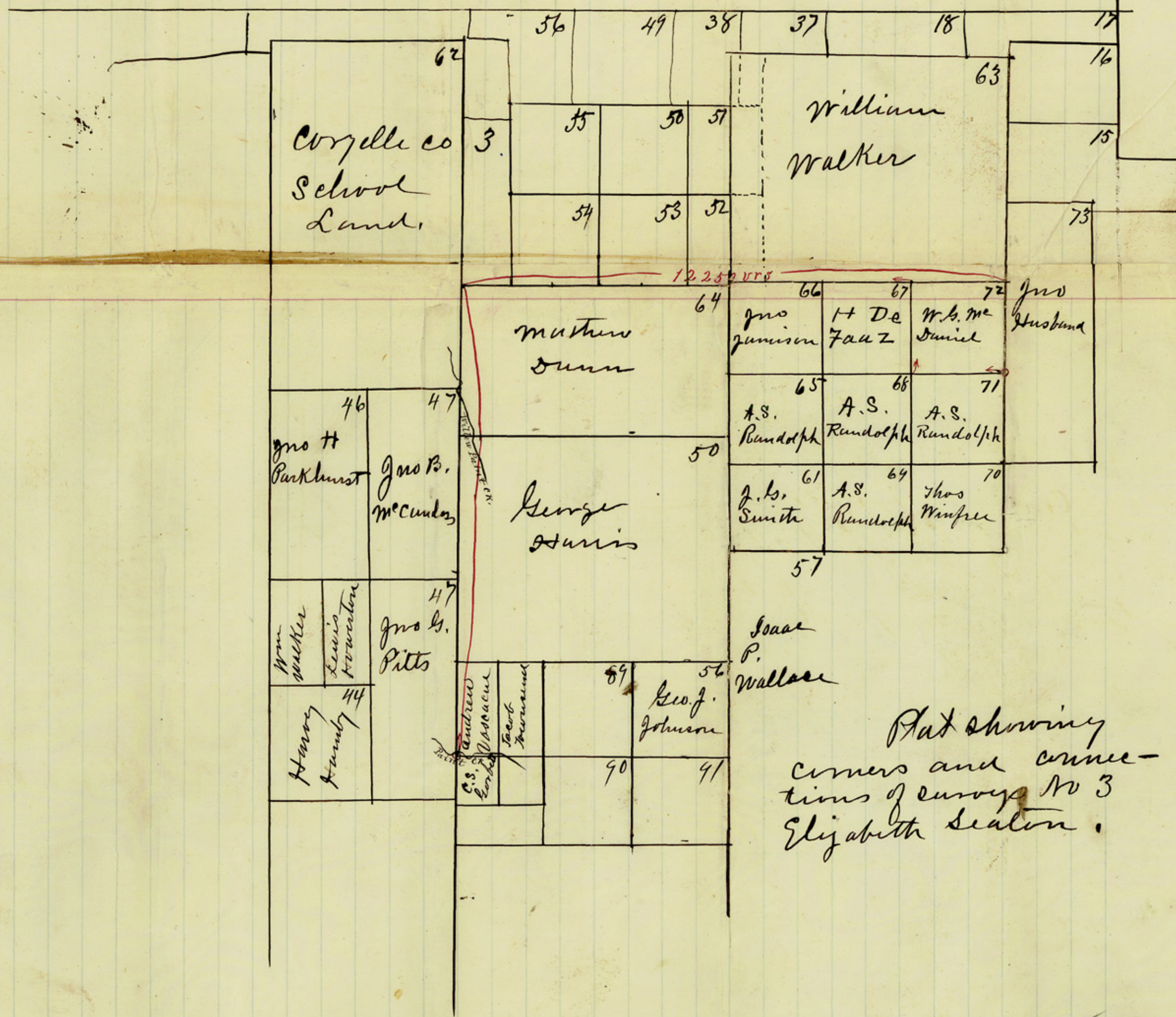


1908-



I, G. R. Couch Surveyor in and for Haskell Co. <sup>Texas</sup> do hereby certify that the above sketches with the information thereon truly and correctly represents surveys made by me in locating the E. Seaton 1280 acre Cert. as actually surveyed on the ground

G. R. Couch  
Surveyor Haskell Co. Tex

