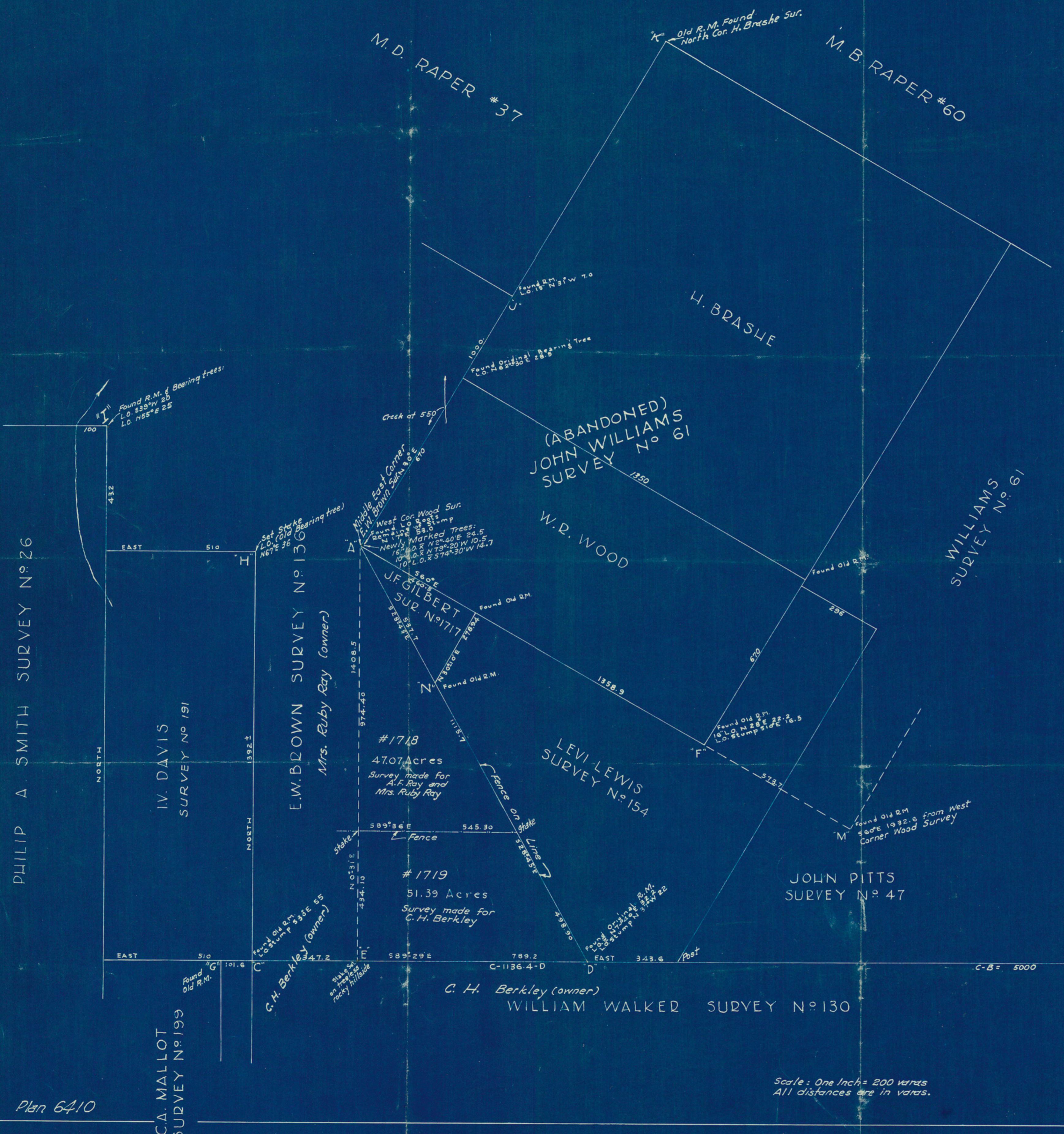


MAP OF SURVEYS
 MADE FOR
MRS. RUBY RAY,
A.F. RAY AND C.H. BERKLEY
 HAYS COUNTY, TEXAS.



Plan 6410

Scale: One Inch = 200 yards
 All distances are in yards.

Certified to in quadruplicate:
 July 23, 1938.
 Surveyed: July 13, 1938.
 For General Land Office
 Travis Preemption #1654
Orin E. Metcalf
 Orin E. Metcalf
 Licensed Land Surveyor
 135 East 6th Street
 Austin, Texas.

Found R.M. and
 Bearing Trees
 L.O. #1505 25
 L.O. (stump) 530°E 61