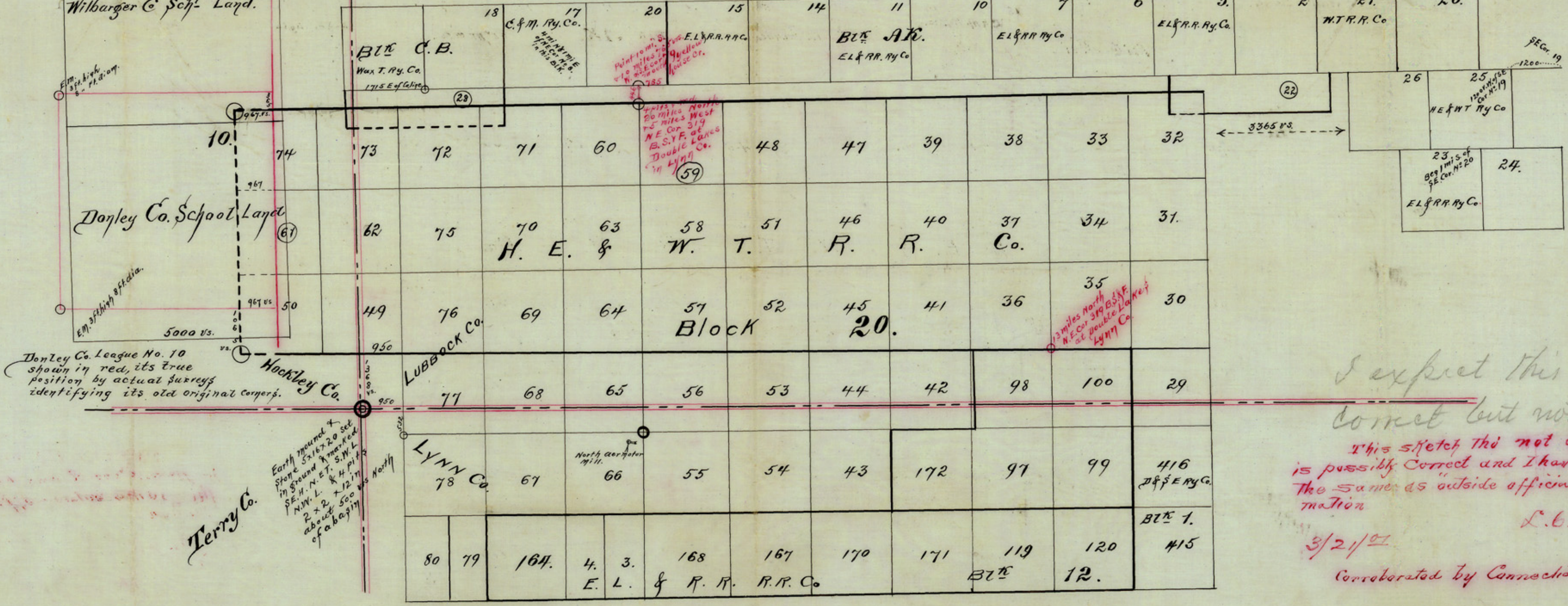
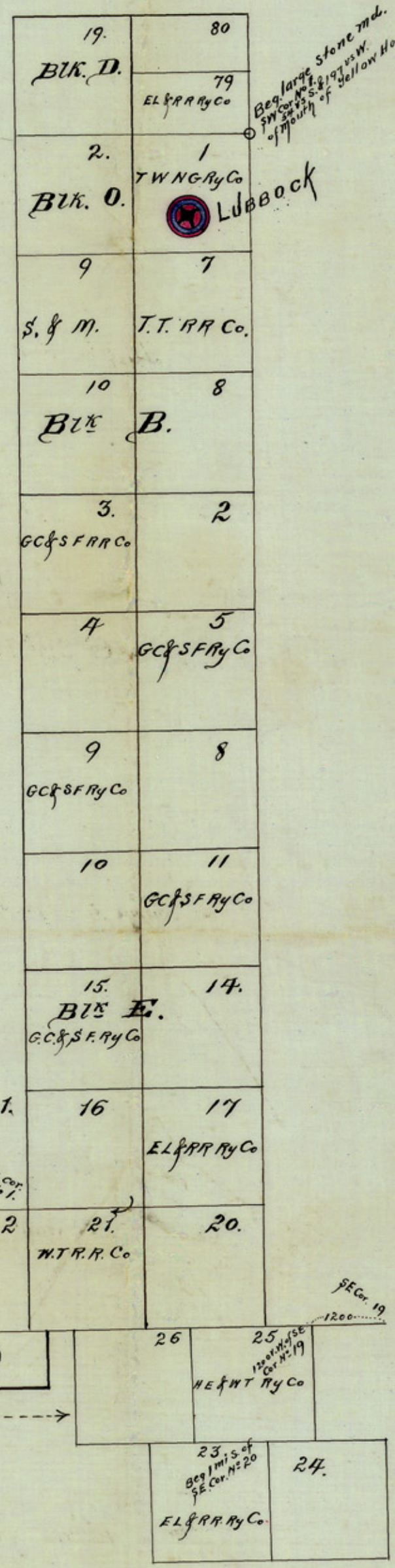
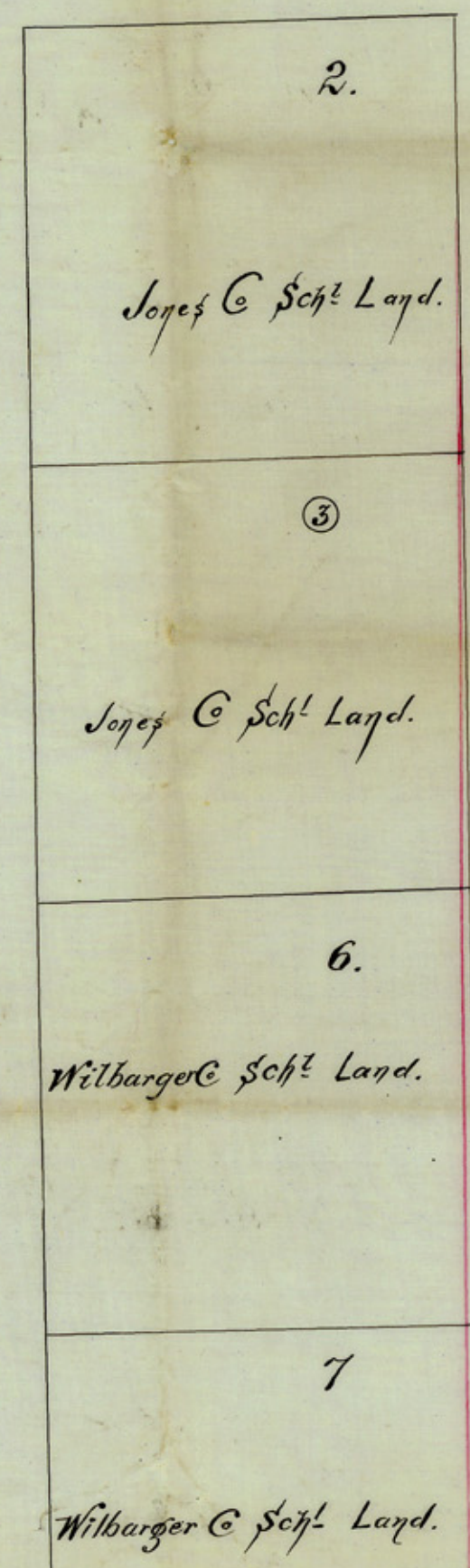


General Land Office,
Austin Texas, 3/21/01.
Copy of Surveyor, N.K. Smith's, Sketch
made for office use.

Sketch showing position of Block No 20 & surroundings from actual
surveys made on the ground by J.K. Smith of plainview Hockley Co.
Texas January 1901. Connections made from the N.E. Cor. 319
B.S.F. at double Lakes Lynn Co. from Fork of Yellow House creek hold
made at SW. Cor. Lea. No 10 Donley County School Land.
True connection made with SW. Cor. of Lubbock Co.
Scale: 2000 Vrs = 1 Inch

Showing Block 20
x surrounding
Lubbock Co. & Lynn Co.



I expect this is about
correct but not official.
This sketch tho not official
is possibly correct and I have filed
the same as outside official infor-
mation
L.C. Wrie
3/21/01
Corroborated by Connection of Geo. M.

Donley Co. League No. 10
shown in red, its true
position by actual survey
identifying its old original corners.

Earth moved &
stone & 1872-20 sec
in ground & marked
SE. 1/4 N. 1/4 E. 1/4 S.W. 1/4
N. 1/4 L. & H. 1/4 P. 1/4
2, 3, 4, 5, 6, 7, 8, 9, 10
of a 10-3-1/4