

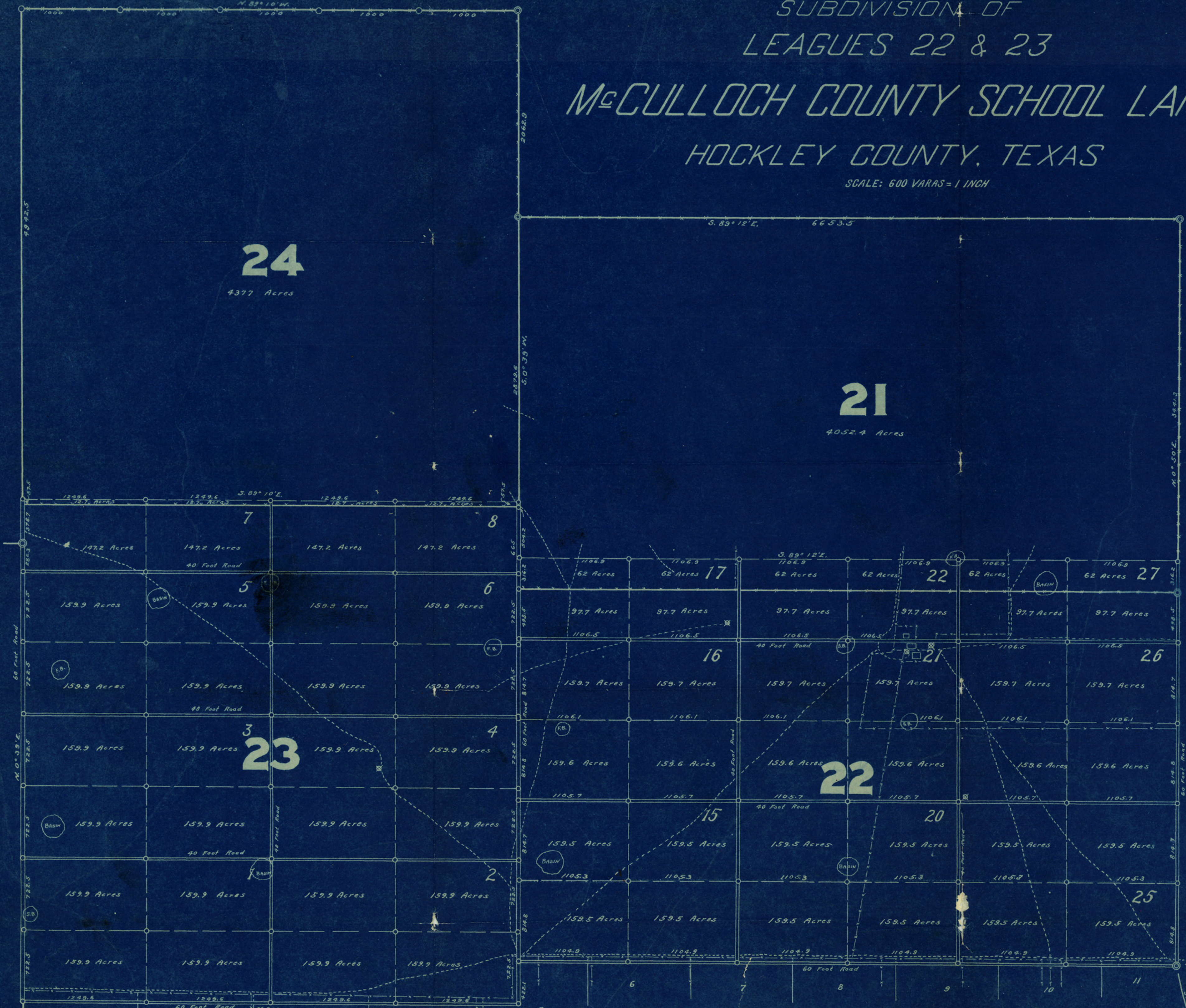
ED F. MANN AND ED LIEDTKE'S

SUBDIVISION OF
LEAGUES 22 & 23

McCULLOCH COUNTY SCHOOL LAND

HOCKLEY COUNTY, TEXAS

SCALE: 600 VARAS = 1 INCH



I, SYLVAN SANDERS, Licensed Land Surveyor, do hereby certify that this map is true and correct.
Sylvan Sanders
Licensed Land Surveyor

○ = 3/4" Iron Pipe set by SYLVAN SANDERS
● = 1 1/2" " " " W.D. TWICHELL
⊗ = Windmill