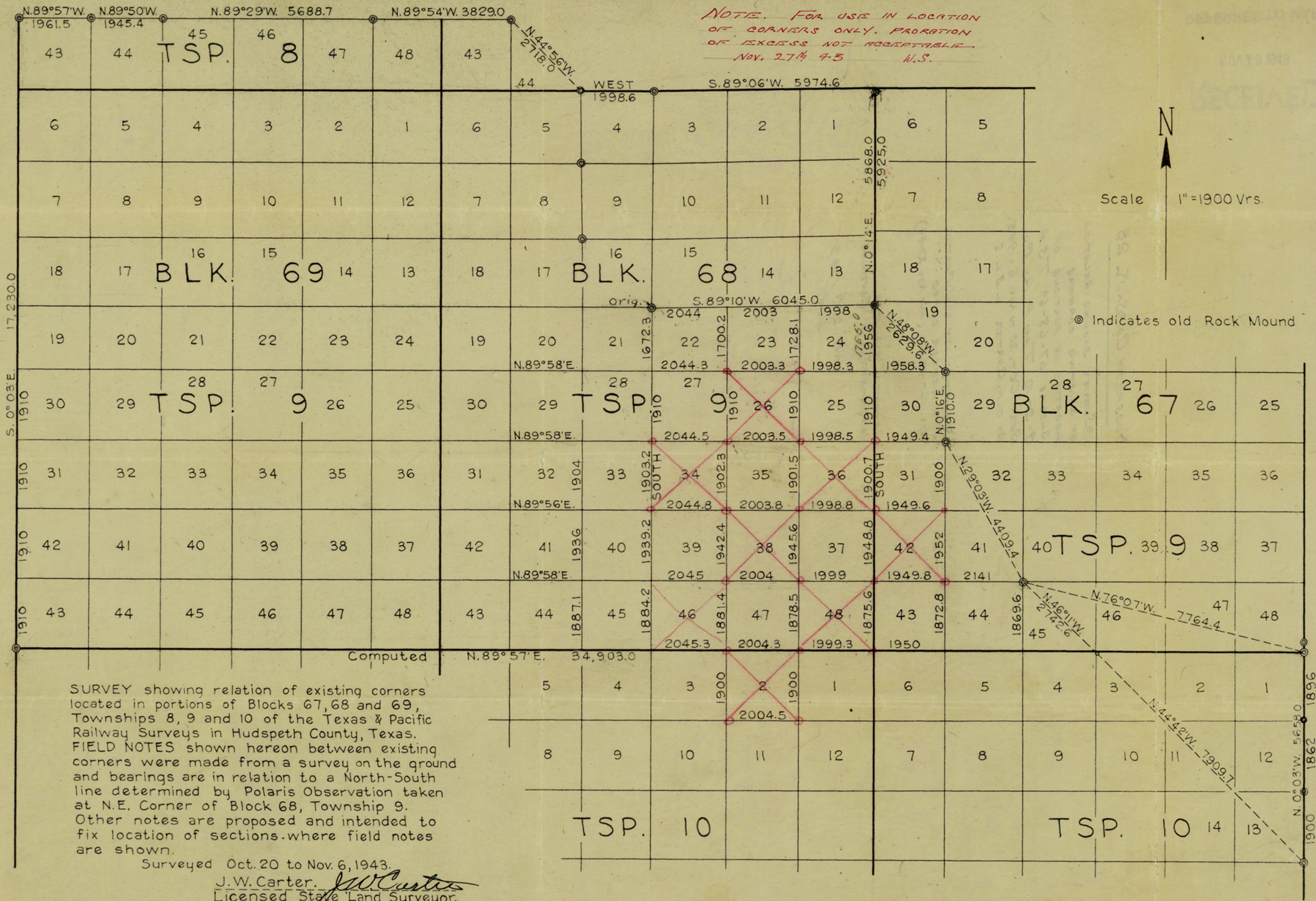


NOTE. FOR USE IN LOCATION OF CORNERS ONLY. PROPORTION OF EXCESS NOT ACCEPTABLE. NOV. 27<sup>th</sup> 43 U.S.



SURVEY showing relation of existing corners located in portions of Blocks 67, 68 and 69, Townships 8, 9 and 10 of the Texas & Pacific Railway Surveys in Hudspeth County, Texas. FIELD NOTES shown hereon between existing corners were made from a survey on the ground and bearings are in relation to a North-South line determined by Polaris Observation taken at N.E. Corner of Block 68, Township 9. Other notes are proposed and intended to fix location of sections where field notes are shown.

Surveyed Oct. 20 to Nov. 6, 1943.  
 J.W. Carter. *J.W. Carter*  
 Licensed State Land Surveyor.