

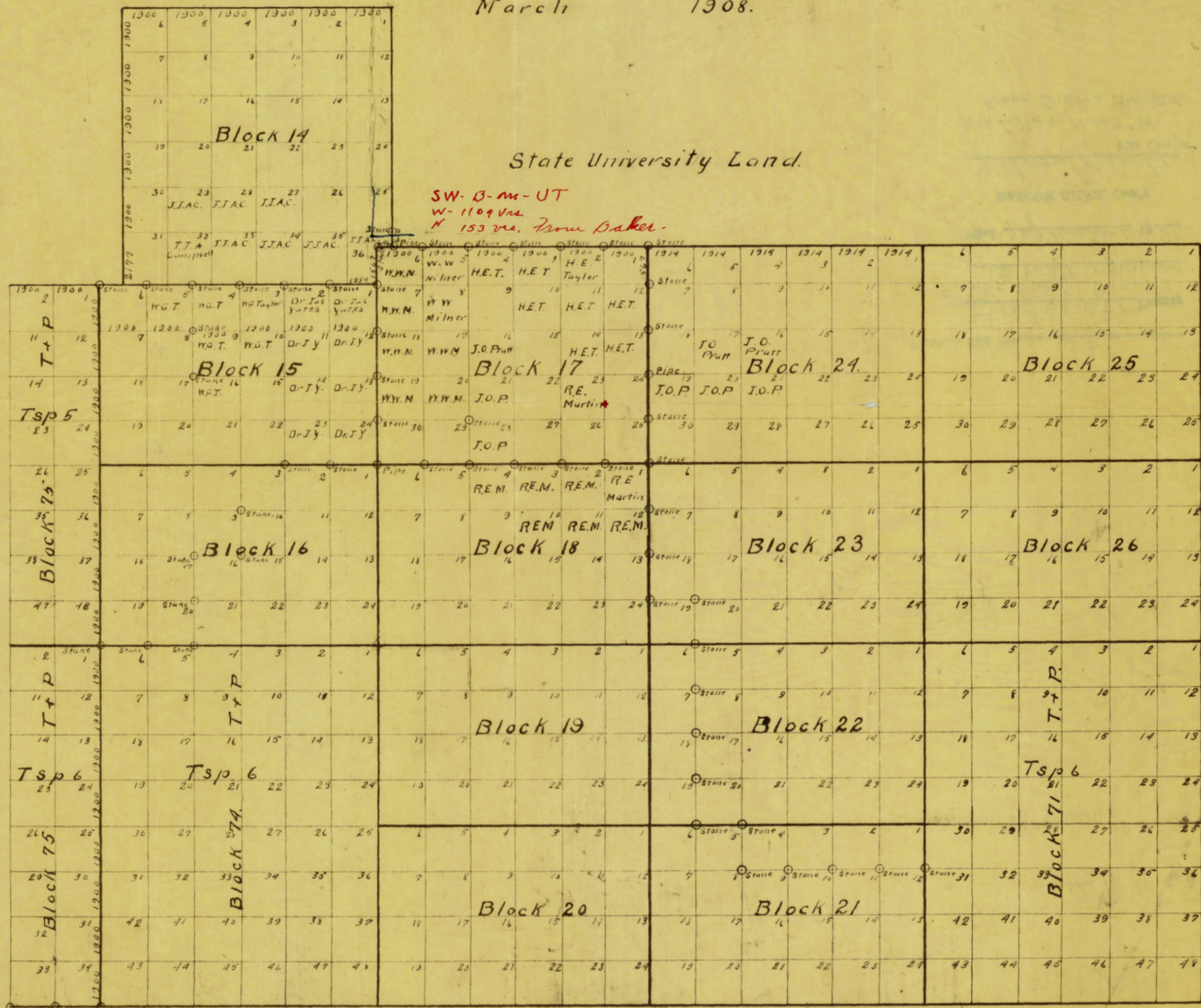
MAP

SHOWING MONUMENTS

ESTABLISHED IN BLOCKS 15, 16, 17, 18, 19, 21, 22, 23 & 24.

EL PASO CO. TEXAS.

Variation 12° East.
 Surveyed by J.W. Eubank Co. Surveyor. F.E. Baker Dept. Surveyor.
 March 1908.



I