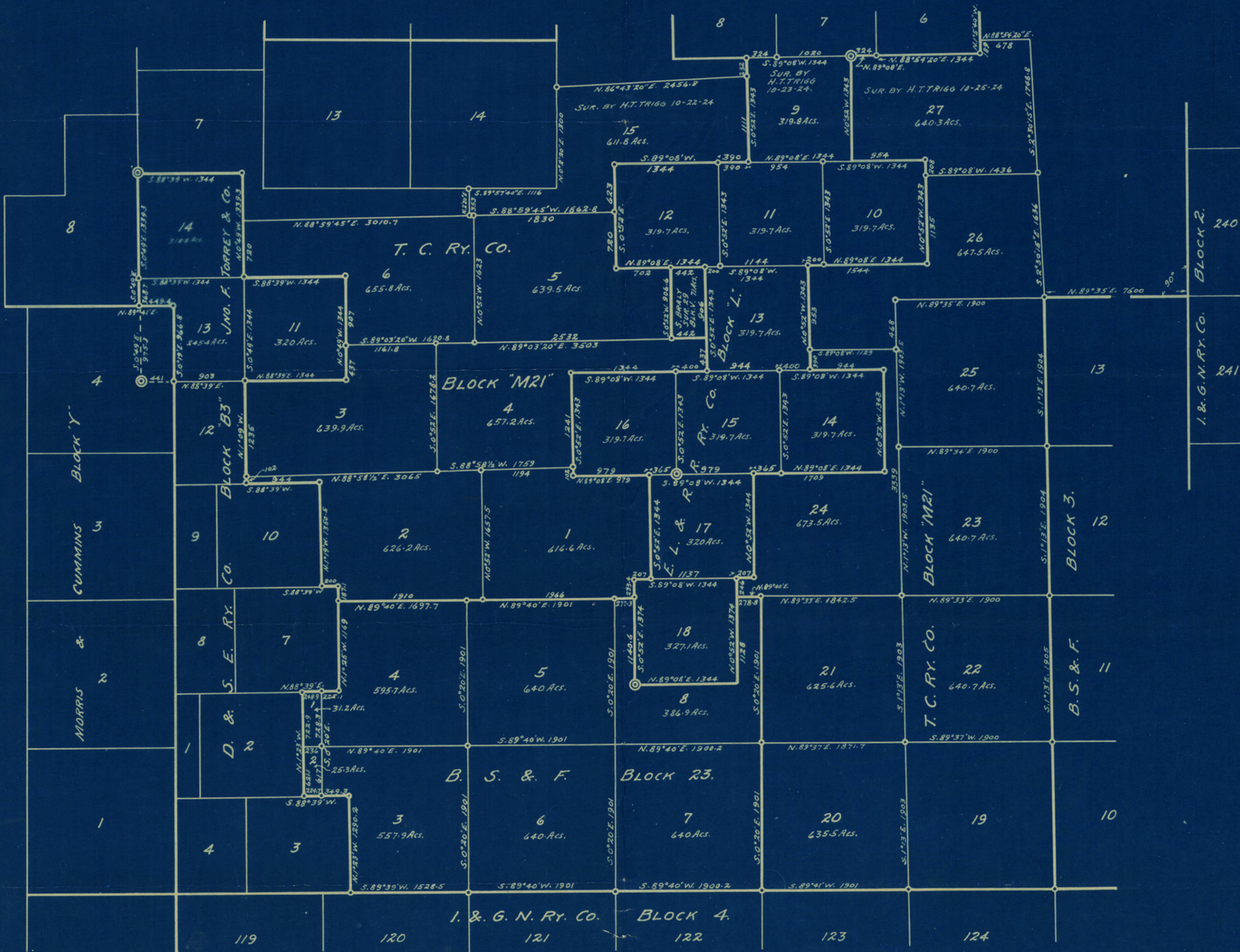


SKETCH IN HUTCHINSON COUNTY, TEXAS.



⊙ ORIGINAL CORNERS.  
 ○ ESTABLISHED CORNERS AND  
 NEW CORNERS BY THIS SURVEY.  
 SCALE 1 INCH = 1000 VARAS.

I. A. H. DOUCETTE, A LICENSED STATE LAND SURVEYOR OF TEXAS, DO  
 HEREBY CERTIFY THAT THE ABOVE IS A TRUE AND CORRECT MAP  
 OF A SURVEY MADE BY ME ON THE GROUND SEPT. 25TH TO NOV. 28TH 1924.  
 I. A. H. Doucette  
 LICENSED STATE LAND SURVEYOR OF TEXAS.