

W. D. HOWREN

ENGINEER

AMARILLO, TEXAS July 21, 1926.

Hon. J. T. Robison,
Commissioner General Land Office,
Austin,
Texas.

877

Dear Sir:

I have recently made a survey under employment of D. Rubin of Amarillo, Texas, of certain surveys in Block 46, H. & T. C. R. R. Co., and surveys 1 and 2, Block X03, the Jane Gammon and G. R. Yantis surveys. I found the surveys in Block 46, H. & T. C. R. R. Co., along the Canadian River do not reach surveys Nos. 1 and 2, Block X03, the Jane Gammon and the G. R. Yantis surveys, by more than 100 varas.

I found all the corners called for in the field notes of the foregoing surveys as shown on the enclosed sketch, also the NW corner survey 81, Block 46, H&TC RR Co., was found and identified on the ground, and also the SW corner survey 79, same block.

The red line, dotted, shows the run made by me and the distances in red are the measurements made by my chainmen for the distances between the corners found on the ground:

I began at the NW corner of survey #1, Block X03, as marked by a stone mound; thence E along the north line of this survey 950 varas. to a large stone set in the ground, for its most easterly NE corner; thence N 90 dgs. off the said North line 3712 vrs., to an old stone mound on the south bank of the Canadian River, same being identified as the NW corner of survey 81 made by Geo. Spiller and called for in his field notes. This shows an excess of 105 vrs. between the N line of survey #1, Block X03 and the north line of survey 82, Block 46, H&TC RR. Beginning at the stone mound on the river, running south the distance called for in survey 82 will therefore fall 105 vrs. short of the rock mound at the said NE corner of the said survey #1.

I began again at the large stone set for the most easterly NE corner of survey #1, Block X03, and extended the said north line of survey #1 east to a point; THENCE North at 633 vrs. found an old stone mound which is not recorded in the field notes, and at 265 vrs., further north, found an old stone mound on the slope of a rocky hill, evidently the original SW corner of survey 79, Block 46, made by George Spiller - thus making an excess of 122 vrs. North and South between X03 and Block 46.

The Commissioner #2.

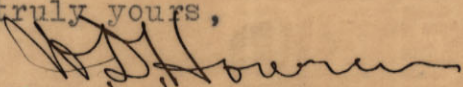
I returned to the NW corner of survey #1, Block X03, and continued this line West and South, identifying all of the stone mounds called for in the Jane Gammon and the James T. Williams surveys, and the G. R. Yantis survey. I find the stones called for along the North line of the said Yantis survey, which purport to be at the SE of 87 and the SW of 86, Block 46, are 55 vrs. North of their proper position as indicated by the location of the James T. Williams and the James Gammon surveys, but check very closely the field notes for the said G. R. Yantis survey.

At the indicated SW corner of survey 85, as located from the James T. Williams survey by W. D. Twichell, there is a stone mound, and another stone mound was found on the ground 162 vrs., south, indicating that some one had set these corners for 85 and 86 from the location of Block 46 to the East; Mr. Watters, in his location of the G. R. Yantis, calls for the SE corner of 86, and again for the SW corner of 85 to be 98 vrs., apart, whereas the field notes of these two surveys set these corners at 162 vrs., apart, and Howard Trigg, in his correction of 86 calls to pass the SW corner of 85 at 98 vrs. instead of 162 vrs.

I have indicated on the sketch, by a light dotted line in black, the proper position of 86 and 87 with reference to the position given Block 46 by the surveys to the south of this block, and by heavy black lines and marked "correct position" I have indicated the correct position of the south line of Block 46 as located from the original corner found on the bank of the river set by Mr. Spiller as the NW corner of 81, and the rock mound at SW corner of survey 79.

The land is broken and aside from the mineral rights thereon is of the probable value of from \$5.00 to \$8.00 per acre. I do not know what would be the value of the mineral rights thereon.

Very truly yours,

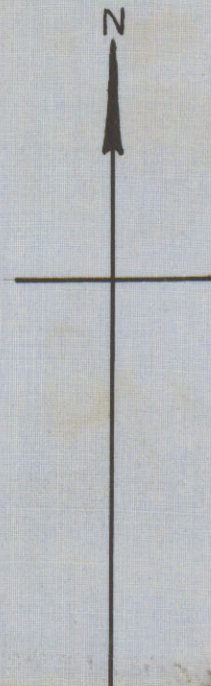

Licensed State Land Surveyor.

WBH-k

RECEIVED

JUL 26 1926

REFERRED TO MAP.

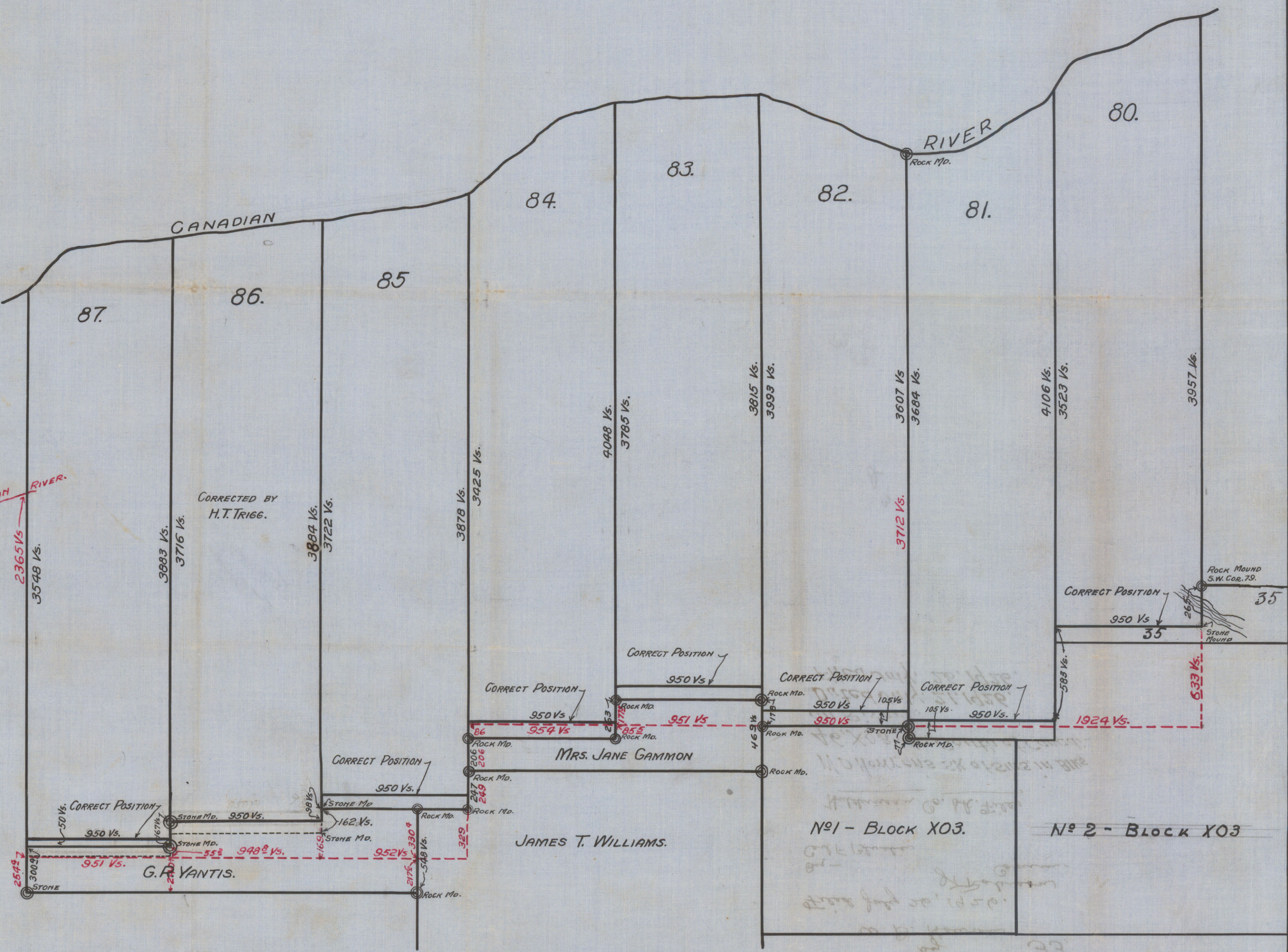


Scale: 1"=500 Vs.

© CORNERS IDENTIFIED ON GROUND.

SKETCH OF SURVEY
MADE BY
H. D. HOWREN,
LICENSED STATE LAND SURVEYOR.

CANADIAN RIVER.



CORRECTED BY
H. T. TRIGG.

MRS. JANE GAMMON

JAMES T. WILLIAMS.

No 1 - Block X03.

No 2 - Block X03

Sketch and Statement
by
W. D. Howen 33.

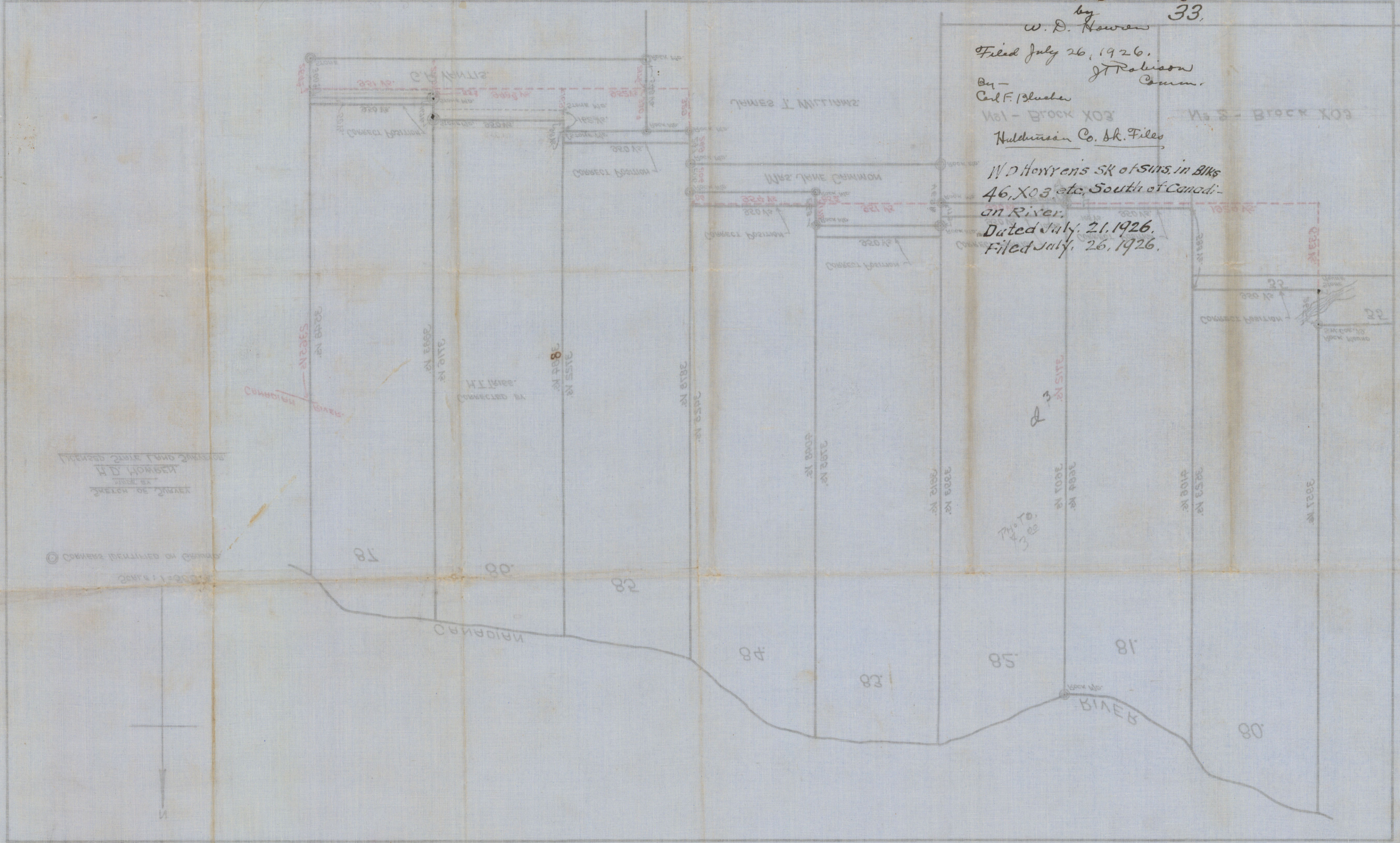
Filed July 26, 1926.

By -
Carl F. Blucher
J. T. Robinson
Comm.

No 1 - Block X03 No 2 - Block X03
Hudson Co. Ark. Files

W. D. Howen's SK of SWS, in Bks
46, X03 etc, South of Canadi-
an River.

Dated July 21, 1926.
Filed July 26, 1926.



W. D. HOWEN
Surveyor
Sketch of Survey

© Copyright Reserved by Surveyor

Scale 1:2000

