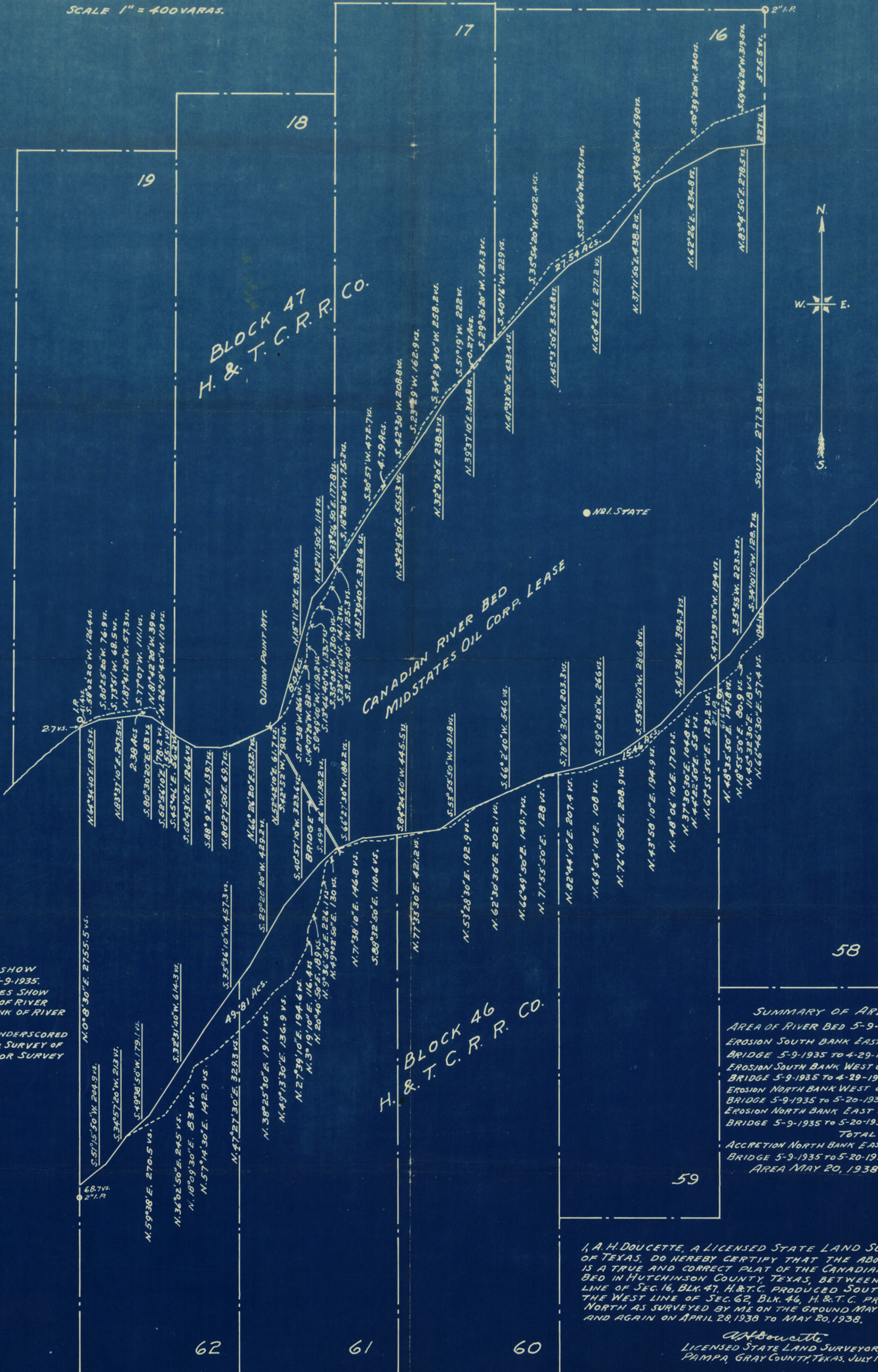


SKETCH OF CANADIAN RIVER BED  
 SURVEY IN HUTCHINSON COUNTY, TEXAS.  
 FOR MIDSTATES OIL CORPORATION, TULSA, OKLA.  
 SCALE 1" = 400 VARAS.



**LEGEND:**  
 SOLID MEANDER LINES SHOW  
 LOCATION OF RIVER BANKS 5-9-1935.  
 SMALL DOTTED MEANDER LINES SHOW  
 LOCATION OF SOUTH BANK OF RIVER  
 4-29-1938 AND NORTH BANK OF RIVER  
 5-20-1938.  
 COURSES AND DISTANCES UNDERSCORED  
 ON MEANDER LINES ARE FOR SURVEY OF  
 1935 AND OTHERS ARE FOR SURVEY  
 OF 1938.

**SUMMARY OF AREA.**

AREA OF RIVER BED 5-9-1935-1770.82 Acs.	
EROSION SOUTH BANK EAST OF BRIDGE 5-9-1935 TO 4-29-1938	15.46 Acs.
EROSION SOUTH BANK WEST OF BRIDGE 5-9-1935 TO 4-29-1938	49.81 Acs.
EROSION NORTH BANK WEST OF BRIDGE 5-9-1935 TO 5-20-1938	2.38 Acs.
EROSION NORTH BANK EAST OF BRIDGE 5-9-1935 TO 5-20-1938	32.33 Acs.
<b>TOTAL</b>	<b>1870.80 Acs.</b>
ACCRETION NORTH BANK EAST OF BRIDGE 5-9-1935 TO 5-20-1938	8.27 Acs.
<b>AREA MAY 20, 1938 -</b>	<b>1862.53 Acs.</b>

I, A. H. DOUCETTE, A LICENSED STATE LAND SURVEYOR OF TEXAS, DO HEREBY CERTIFY THAT THE ABOVE SKETCH IS A TRUE AND CORRECT PLAT OF THE CANADIAN RIVER BED IN HUTCHINSON COUNTY, TEXAS, BETWEEN THE EAST LINE OF SEC. 16, BLK. 47, H. & T. C. PRODUCED SOUTH AND THE WEST LINE OF SEC. 62, BLK. 46, H. & T. C. PRODUCED NORTH AS SURVEYED BY ME ON THE GROUND MAY 7-9-1935 AND AGAIN ON APRIL 28, 1938 TO MAY 20, 1938.

A. H. Doucette  
 LICENSED STATE LAND SURVEYOR,  
 PAMPA, GRAY COUNTY, TEXAS, JULY 16, 1938.