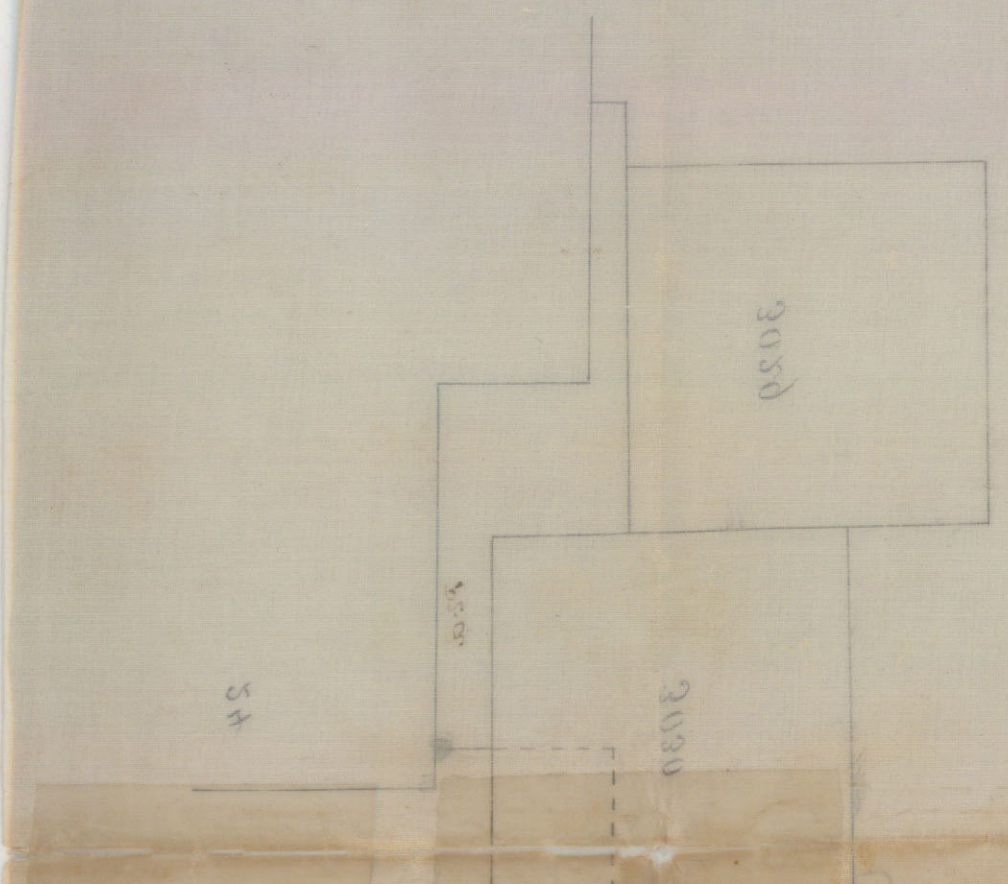


Sketch
of
surveys in Irion Co.
scale 10000 vrs. to an inch.
General Land Office
Febr. 24th 1891.

Filed Oct 23 1891.
Dated Feb 24 1891.
H/S Co.
Received & approved
Sponsor of Irion Co.
Sponsor of Irion Co.
Sponsor of Irion Co.
Sponsor of Irion Co.
Sponsor of Irion Co.

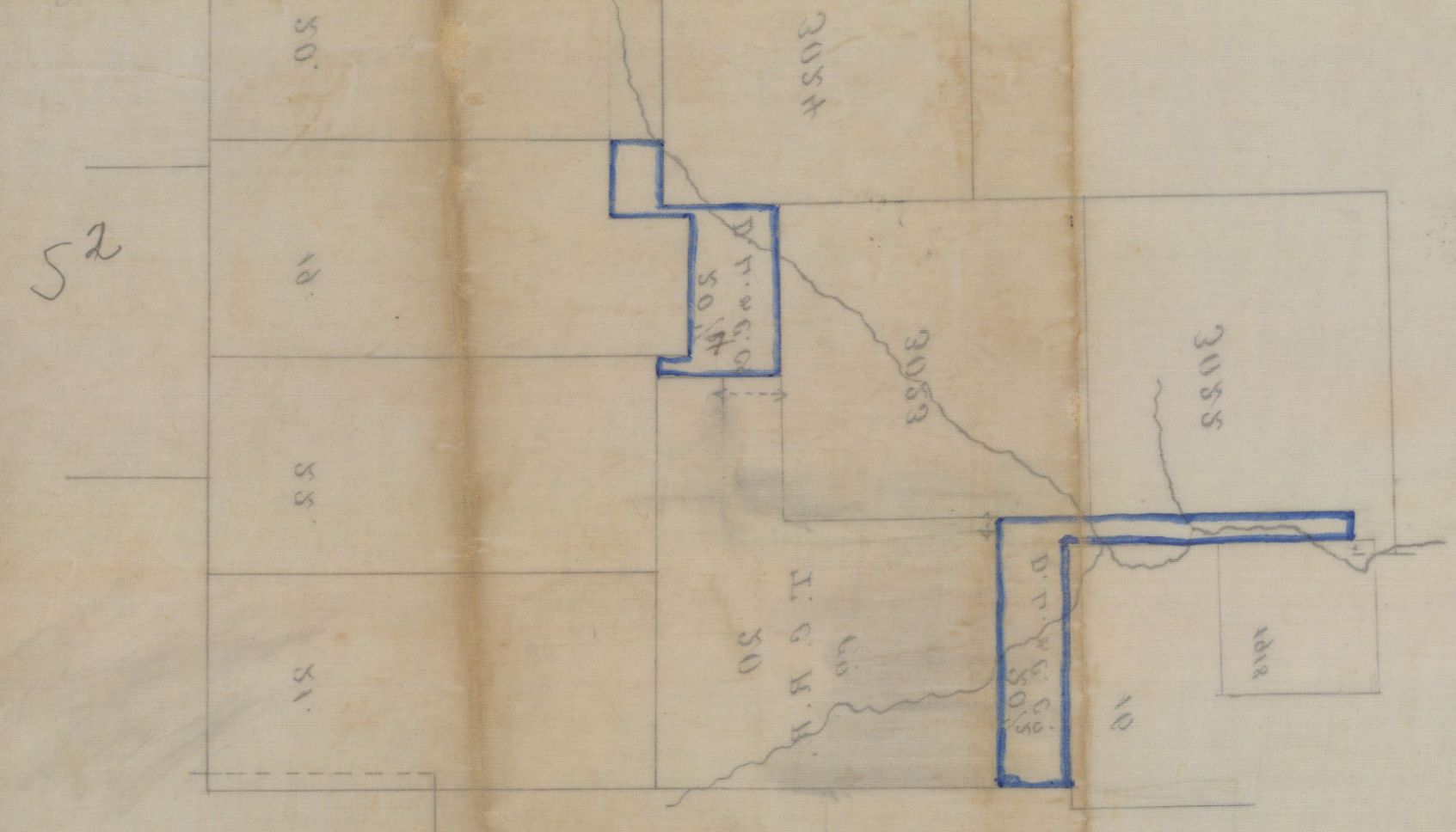
The above sketch shows the vacancies left for
N. 22 1/2 made for L. C. Clemons and N. 20 1/2
Day Land and Cattle Co. in Irion Co.
N. 22 1/2 can be corrected by amended application
taking up the vacancy between N. 20 and 21.
N. 20 1/2, separated in two surveys, covers
vacancies of less than 400 acres and not
eligible of location by Certificates.



Union Co - 3 -
 Schutze's office sketch
 showing vacancies left for
 L.C. Clemens & Day Land & Cat-
 tle Co.

Returned by
 Lane & Felt
 Oct 23/91

Dated Feb. 24, 1891.
 Filed Oct. 23, 1891.



Map of Feb. 24, 1891.
 showing vacancies left for
 Lane & Felt
 Oct 23/91

